



TRELLEBORG



**Technical
Manual**

MATERIAL HANDLING
PORTS AND HARBOURS
GROUND SUPPORT EQUIPMENT
INDUSTRIAL WHEELS



Index



We believe in going further, creating, adding and delivering value and business acceleration for our customers around the world.

Material Handling

Ports and Harbours

Ground Support Equipment

Industrial Wheels

Product Range Overview	06
Compounds	10
Tire Capacity	12

Resilient Tires

Trelleborg Elite XP 	18
Trelleborg M ² 	22
Trelleborg Premia	26
Mastersolid	28
Orca	30
Ecosolid	32

Pneumatic Tires

TR-900	34
T-900	36
Mitas FL-08	38
T-800	40
Mitas Utility Trucks	42

Press On Solid Tires

Trelleborg	44
Monarch	52

Pneumatic Tires	58
------------------------	-----------

Resilient Tires	58
------------------------	-----------

GSE Resilient Tires	62
----------------------------	-----------

GSE POS Tires	62
----------------------	-----------

GSE Pneumatic Tires	64
----------------------------	-----------

Lock Ring Wheels	68
------------------	----

Split Wheels	69
--------------	----

Press On Band Wheels	70
----------------------	----

Earthmover Wheels	70
-------------------	----

Drop Centre Wheels	71
--------------------	----

Trelleborg Wheel Systems, part of Trelleborg Group, is a leading global supplier of tires and complete wheels for agricultural and forestry machines, materials handling, construction vehicles, motorcycles, bicycle and other specialty segments. It offers highly specialized solutions to create added value for customers and it's partner of the leading Original Equipment

Manufacturers. Its manufacturing facilities are located in Italy, Latvia, Brazil, Czech Republic, Serbia, Slovenia, China, Sri Lanka and U.S.

www.trelleborg.com/wheels

Trelleborg is a world leader in engineered polymer solutions that seal, damp and protect critical applications in demanding environments. Its innovative solutions accelerate performance for customers in a sustainable way. The Trelleborg Group has annual sales of about SEK 34 billion (EUR 3.32 billion, USD 3.92 billion) and operations in about 50 countries. The Group comprises

five business areas: Trelleborg Coated Systems, Trelleborg Industrial Solutions, Trelleborg Offshore & Construction, Trelleborg Sealing Solutions and Trelleborg Wheel Systems. The Trelleborg share has been listed on the Stock Exchange since 1964 and is listed on Nasdaq Stockholm, Large Cap.

www.trelleborg.com



Product Range Overview

Size Category	Tire Size	Alternative Size	Rim	● Resilient ▼ Radial Pneumatic ■ Bias Pneumatic											
				Maximum Intensity				High Intensity	Medium Intensity					Low Intensity	
				Elite XP	M ²	TR-900	T-900	Premia	T-800	FL-08	GSE	Utility Trucks	Master-solid	Orca	Ecosolid
15"	28x9-15	225/75-15 (8.15-15)	7.0-15	●	●	▼	■	●	■				●	●	●
	8.15-15		7.0-15						■	■					
	300-15	315/70-15	8.0-15	●	●	▼	■	●	■	■			●	●	●
	355/45-15	28x12½-15	9.75-15		●										
	355/50-15		9.75-15		●										
	355/65-15	32x12½-15 (350-15)	9.75-15	●	●		■	●						●	●
	400/60-15		11.00-15		●										
	5.50-15		4.5-15	●											
	6.00-15		4.5-15	●											
	7.00-15	29x8-15	5.5-15	●	●	▼	■	●	■				●	●	●
	7.00-15	29x8-15	6.0-15	●											
	7.50-15		5.5-15	●	●								●		
	7.50-15		6.0-15	●			■		■						
	7.50-15		6.5-15	●	●								●	●	
	8.25-15		5.5-15	●	●										
8.25-15		6.5-15	●	●	▼	■	●	■	■			●	●	●	
16"	40x14-16/10.00		10.00-16							●					
	40x14-16/11.00		11.00-16							●					
	7.50-16	250/80-16	5.5-16		●										
	7.50-16	250/80-16	6.0-16	●			■					■			
20"	10.00-20	290/95-20	6.5-20	●	●										
	10.00-20	290/95-20	7.5-20	●		▼	■					■			
	10.00-20	290/95-20	8.0-20	●	●										
	11.00-20	300/95-20	8.0-20	●			■					■			
	12.00-20	330/95-20	8.0-20	●	●										
	12.00-20	330/95-20	8.5-20	●	●	▼	■					■			
	12.00-20	330/95-20	10.0-20	●	●										
	355/50-20		10.0-20	●	●										
	465/55-20		16.0-20										●		
	6.50-20		5.0-20										▼		
	6.50-20		5.5-20										■		
	8.25-20		6.5-20		●								■		
	9.00-20	270/95-20	6.5-20	●	●										
	9.00-20	270/95-20	7.0-20	●			■					■			
24"	12.00-24	330/95-24	8.5-24	●		▼	■								
	12.00-24	330/95-24	10.0-24	●											
	14.00-24	385/95-24	10.0-24	●		▼	■								
25"	16.00-25	445/95-25	11.25-25/2.0	●		▼									

Polymer Engineering. Application Expertise.

Through polymer engineering and application expertise, Trelleborg strives to deliver optimum performance for all our customers. Tailored for specialist applications and environments, our tires provide innovative solutions for a growing range of industries.

Alongside our premium tire and wheel offering for typical material handling applications, Trelleborg also delivers high performance tires for specialist vehicles operating in demanding environments. Trelleborg's specialist premium compounds are designed to deliver maximum productivity and sustainability, and adhere to compliant safety regulations to keep operators safe.

BUSINESS ACCELERATORS



PRODUCTIVITY

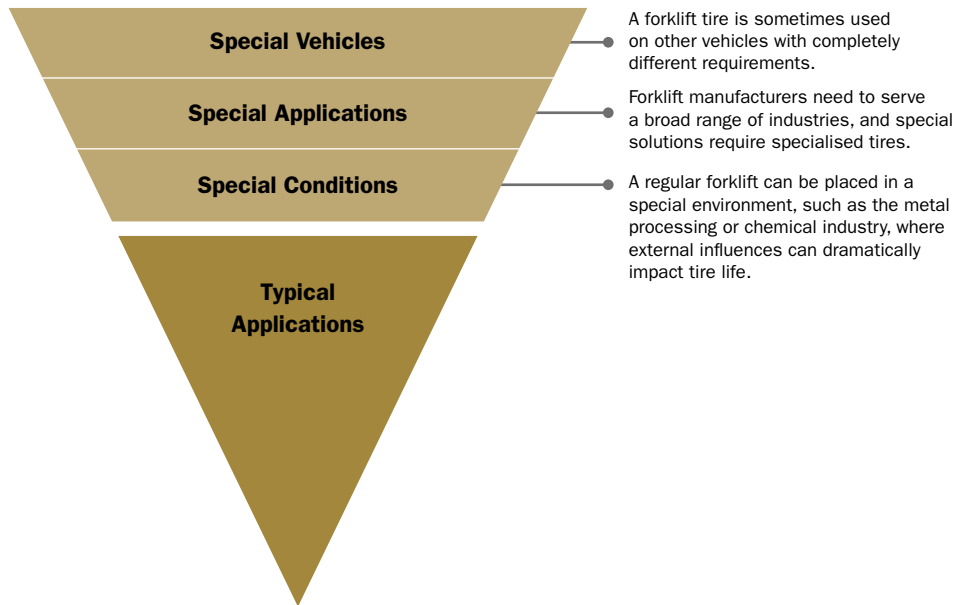


SAFETY



SUSTAINABILITY

Our range of specialist premium tire compounds are divided into two working groups.



Tires designed for specific jobs		Tires engineered to resist external influence	
ProTEX	Conductive tread compound which prevents electric shock and sparks for non marking indoor applications.	Non Marking	Designed not to leave black marks on the ground with low rolling resistance and low heat build-up.
ProENERGY	Cool running tread compound with low hysteresis for electric vehicles.	Oil Resistant	Special tread compound with increased chemical resistance to solvents, oil and greasy environments.
ProHD	Increased carrying capacity for overload situations.	Cut Resistant	Effective on rough, jagged surfaces. Prevents chunking and sidewall damage.
Electrically Conducting	Conductive tread compound which prevents electric shock and sparks. Required in explosive environments.	Deflection Resistant	Stiffer compound for roller coaster type applications.

Tire Capacity

Resilient Tire Capacity Table						
Size	Rim	Overall Diameter	Section Width	Other Vehicles	Forklift 25km/h	
				Static	Load Wheel	Steering Wheel
3.00-4	2.10-4	252	84	295	260	195
12x4-6	2.5-6	303	91	570	485	375
4.00-4	2.50C-4	307	92	625	535	412
10½x4-6	3.25I-6	268	104	710	610	470
4.00-8	3.75P-8	408	125	1,175	1,010	775
15x4½-8	3.00D-8	377	118	1,210	1,040	800
140/55-9	4.00E-9	380	132	1,360	1,170	900
16x6-8	4.33R-8	411	152	1,740	1,495	1,150
23x5-13	3.75P-13	617	138	1,740	1,495	1,150
5.00-8	3.75P-8	457	152	1,740	1,495	1,150
17x7-8	4.33R-8	430	159	2,160	1,860	1,430
6.00-9	4.00E-9	524	141	2,190	1,885	1,450
18x7-8	4.33R-8	456	158	2,490	2,145	1,650
5.50-15	4.5-15	664	143	2,490	2,145	1,650
6.00-15	4.5-15	694	150	2,720	2,340	1,800
6.50-10	5.00F-10	574	160	2,720	2,340	1,800
180/60-10	5.00F-10	458	157	2,795	2,410	1,850
18x9-8	7.00-8	457	207	2,870	2,470	1,900
200/50-10	6.50F-10	456	197	2,870	2,470	1,900
21x8-9	6.00E-9	514	180	3,200	2,755	2,120
7.00-12	5.00S-12	650	172	3,380	2,920	2,240
23x9-10	6.50F-10	583	200	4,000	3,445	2,650
7.00-15	5.5-15	717	162	4,115	3,545	2,725
7.00-15	6.0-15	730	180	4,115	3,545	2,725
23x10-12	8.00G-12	583	240	4,380	3,770	2,900
27x10-12	8.00G-12	670	235	4,530	3,900	3,000
28x9-15	7.0-15	692	225	4,530	3,900	3,000
7.50-15	6.0-15	745	194	4,530	3,900	3,000
7.50-16	6.0-16	753	205	4,645	4,000	3,075
315/45-12	10.00G-12	572	279	5,210	4,485	3,450
250-15	7.0-15	709	206	5,510	4,750	3,650
8.25-15	6.5-15	808	207	5,510	4,750	3,650

Press On Band Tire Capacity Table							
Size	Overall Diameter	Section Width	Other Vehicles			Forklift 25km/h	
			@ 6 km/h	@ 10 km/h	@ 16 km/h	Load Wheel	Steering Wheel
10x4x6½	254	102	780	640	555	565	465
9x5x5	229	127	960	790	680	695	570
10x5x6½	254	127	1010	830	725	735	605
10½x5x6½	267	127	1070	880	770	780	640
13x4½x8	330	114	1120	920	800	815	670
16x4x12½	406	102	1120	920	800	810	665
14x4½x8	356	114	1170	960	830	850	695
13x5x8	330	127	1290	1060	920	935	765
14x5x10	356	127	1335	1095	955	970	795
15x5x11¼	381	127	1390	1140	990	1010	830
15½x5x10	394	127	1470	1210	1050	1070	875
13½x5½x8	343	140	1510	1240	1080	1095	895
16x5x10½	406	127	1510	1240	1080	1095	895
16½x5x11¼	413	127	1530	1250	1090	1105	905
17x5x12½	432	127	1570	1290	1120	1145	935
18x5x12½	457	127	1640	1350	1170	1195	980
15x6x11¼	381	152	1715	1410	1225	1245	1020
16x6x10½	406	152	1910	1570	1360	1390	1140
16½x6x11¼	413	152	1920	1580	1370	1395	1140
17x6x12½	432	152	1980	1630	1410	1435	1180
18x6x12½	457	152	2100	1720	1500	1525	1250
16x7x10½	406	178	2325	1910	1660	1685	1380
16½x7x11¼	413	178	2325	1900	1650	1680	1380
16½x7x11¼	413	178	2325	1900	1650	1680	1380
22x6x17¾	559	152	2345	1925	1675	1700	1395
21x6x15	533	152	2350	1930	1680	1710	1400
22x6x16	559	152	2450	2000	1740	1770	1450
18x7x12½	457	178	2550	2100	1820	1855	1520
21x7x15	533	178	2875	2350	2050	2085	1710
22x7x16	559	178	2975	2450	2125	2160	1770
18x8x12½	457	203	3000	2475	2150	2180	1790
21x8x15	533	203	3375	2775	2425	2455	2015

Tire Capacity CONTINUED

Resilient Tire Capacity Table						
Size	Rim	Overall Diameter	Section Width	Other Vehicles	Forklift 25km/h	
				Static	Load Wheel	Steering Wheel
8.25-20	6.5-20	954	230	5,510	4,380	3,650
280/50-15	8.0-15	670	255	6,040	5,200	4,000
355/45-15	9.75-15	692	287	6,610	5,690	4,375
355/50-15	9.75-15	710	284	6,610	5,690	4,375
300-15	8.0-15	812	255	6,795	5,850	4,500
9.00-20	6.5-20	974	220	6,795	5,400	4,500
10.00-20	8.0-20	1,009	250	7,550	6,000	5,000
11.00-20	8.0-20	1,040	260	8,230	6,540	5,450
355/65-15	9.75-15	812	284	9,060	7,800	6,000
12.00-20	10.0-20	1,090	313	9,815	7,800	6,500
355/50-20	10.0-20	834	310	10,420	8,970	6,900
400/60-15	11.00-15	815	325	10,420	8,970	6,900
12.00-24	10.0-24	1,181	295	11,325	9,000	7,500
465/55-20	16.0-20	1,029	465	13,590	10,800	9,000
14.00-24	10.0-24	1,325	331	13,970	11,100	9,250
16.00-25	11.25-25	1,445	410	18,875	15,000	12,500

For guide purposes only, for design purposes please refer to the specific technical documents for the size in question

Press On Band Tire Capacity Table							
Size	OD	Width	Other Vehicles			Forklift 25km/h	
			@ 6 km/h	@ 10 km/h	@ 16 km/h	Load Wheel	Steering Wheel
18x9x12½	457	229	3450	2850	2475	2510	2060
22x8x16	559	203	3500	2875	2500	2545	2085
21x9x15	533	229	3900	3200	2775	2830	2320
22x9x16	559	229	4050	3325	2875	2930	2400
22x10x16	559	254	4575	3750	3250	3315	2720
28x10x22	711	254	5470	4490	3905	3970	3255
22x12x16	559	305	5625	4625	4025	4090	3350
22x14x16	559	356	6700	5505	4785	4865	3990
28x12x22	711	305	6740	5540	4820	4900	4015
22x16x16	559	406	7745	6360	5530	5625	4610
28x14x22	711	356	8020	6590	5720	5820	4780
40x12x30	1016	305	8760	7170	5690	6030	5010
28x16x22	711	406	9270	7620	6620	6730	5520
40x14x30	1016	356	10610	8675	6890	7300	6060
40x16x30	1025	406	12420	10160	8060	8550	7095
40x20x30	1025	508	16120	13180	10460	11090	9210



Material Handling

RESILIENT TIRES

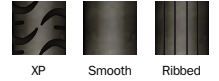
PNEUMATIC TIRES

PRESS ON SOLID TIRES

Trelleborg Elite XP

MAXIMUM INTENSITY RESILIENT

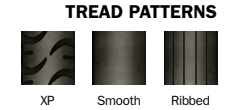
TREAD PATTERNS



Size	Alternative Size	Rim	Alternative Pattern	Tire type & Compound availability					● STD ■ LOC ▼ BOTH			Product Dimensions [mm]		Load Capacity [kg]		
				Multi Purpose	Non Marking	Electrically Conducting	ProTEX**	ProHD*	ProENERGY (HL)	Cut Resistant	Oil Resistant (SCBR)	Overall Diameter	Section Width	Other	Counterbalanced Lift Trucks up to 25 km/h	
														Static	Load Wheel	Steering Wheel
3.00-4		2.10-4		●	●						252	84	295	260	195	
3.00-4		2.50C-4		●	●						252	84	295	260	195	
4.00-4		2.50C-4		●	●	●					307	92	625	535	412	
4.00-8		3.00D-8		▼	▼	■			●		406	104	1,100	950	730	
15x4½-8	125/75-8	3.00D-8		▼	▼	▼	■	▼	▼	■	377	118	1,210	1,040	800	
15x4½-8	125/75-8	3.00D-8	Ribbed	▼	●						377	118	1,210	1,040	800	
15x4½-8	125/75-8	3.25D-8		●	●						377	118	1,210	1,040	800	
5.00-8		3.00D-8		▼	▼	■			●	●	457	122	1,650	1,415	1,090	
5.00-8		3.75D-8		●	●						457	152	1,740	1,495	1,150	
16x6-8	150/75-8	4.33R-8		▼	▼	▼	■	■			411	152	1,740	1,495	1,150	
18x7-8	180/70-8	4.33R-8		▼	▼	▼	■	▼	▼	●	456	158	2,490	2,145	1,650	
18x7-8	180/70-8	4.33R-8	Smooth	▼	■				▼		456	158	2,490	2,145	1,650	
140/55-9	15x5.5-9	4.00E-9		▼	▼	■	■	■			380	132	1,360	1,170	900	
6.00-9		4.00E-9		▼	▼	▼		▼		●	524	141	2,190	1,885	1,450	
6.00-9		4.00E-9	Smooth	▼							524	141	2,190	1,885	1,450	
21x8-9	200/75-9	6.00E-9		▼	▼	▼	■	■		▼	518	186	3,200	2,755	2,120	
6.50-10		5.00F-10		▼	▼	▼		▼	●	●	574	160	2,720	2,340	1,800	
6.50-10		5.00F-10	Smooth	▼							574	160	2,720	2,340	1,800	
180/60-10		5.00F-10		■	■			■			458	157	2,795	2,410	1,850	
200/50-10		6.50F-10		▼	▼	▼	■	■			456	197	2,870	2,470	1,900	
23x9-10	225/75-10	6.50F-10		▼	▼	▼	■				583	200	4,000	3,445	2,650	
7.00-12		5.00S-12		▼	▼	▼		▼	●	●	650	172	3,380	2,920	2,240	
7.00-12		5.00S-12	Smooth	▼	●						650	172	3,380	2,920	2,240	
23x10-12	250/60-12	8.00G-12		▼	▼	▼	■	■	■		583	240	4,380	3,770	2,900	
23x10-12	250/60-12	8.00G-12	Smooth	■					▼		583	240	4,380	3,770	2,900	
27x10-12	250/75-12	8.00G-12		▼	▼	▼		▼	●		676	240	4,530	3,900	3,000	
315/45-12		10.00G-12		■	■				■		572	279	5,210	4,485	3,450	
23x5-13		3.75P-13		▼	▼						617	138	1,740	1,495	1,150	
5.50-15		4.5-15		●	●						664	143	2,490	2,145	1,650	
6.00-15		4.5-15		●	●						694	150	2,720	2,340	1,800	
7.00-15	29x8-15	5.5-15		▼	▼	■					730	180	4,115	3,545	2,725	
7.00-15	29x8-15	6.0-15		●	●						730	180	4,115	3,545	2,725	

Trelleborg Elite XP CONTINUED

MAXIMUM INTENSITY RESILIENT

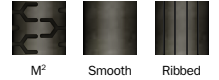


Size	Alternative Size	Rim	Alternative Pattern	Tire type & Compound availability					● STD ■ LOC ▼ BOTH			Product Dimensions [mm]		Load Capacity [kg]		
				Multi Purpose	Non Marking	Electrically Conducting	ProTEX**	ProHD*	ProENERGY (HL)	Cut Resistant	Oil Resistant (SCBR)	Overall Diameter	Section Width	Other	Counterbalanced Lift Trucks up to 25 km/h	
														Static	Load Wheel	Steering Wheel
7.50-15		5.5-15		●								745	194	4,530	3,900	3,000
7.50-15		6.0-15		●								745	194	4,530	3,900	3,000
7.50-15		6.5-15		●	●							745	194	4,530	3,900	3,000
8.25-15		5.5-15		●								808	207	5,360	4,615	3,550
8.25-15		6.5-15		▼	▼	▼	■	▼				808	207	5,510	4,750	3,650
28x9-15	225/75-15 (8.15-15)	7.0-15		▼	▼	▼						692	225	4,530	3,900	3,000
250-15	250/70-15	7.0-15		▼	▼	▼	■	▼				711	225	5,510	4,745	3,650
250-15	250/70-15	7.5-15		▼	▼	▼						712	238	5,510	4,745	3,650
300-15	315/70-15	8.0-15		▼	▼	▼	■	▼				812	255	6,795	5,850	4,500
355/50-15		9.75-15		▼	▼	■						710	284	6,610	5,690	4,375
355/65-15	32x12½-15 (350-15)	9.75-15		▼	▼	■		▼				812	284	9,060	7,800	6,000
7.50-16	250/80-16	6.0-16		●	●	●						753	205	4,645	4,000	3,075
7.50-16	250/80-16	6.0-16	Smooth	●								753	205	4,645	4,000	3,075
9.00-20	270/95-20	6.5-20		●								974	220	6,795	5,400	4,500
9.00-20	270/95-20	7.0-20		●	●							974	220	6,795	5,400	4,500
10.00-20	290/95-20	6.5-20		●								1,011	249	7,365	5,850	4,875
10.00-20	290/95-20	7.5-20		●								1,009	250	7,550	6,000	5,000
10.00-20	290/95-20	7.5-20	Smooth	●								1,009	250	7,550	6,000	5,000
10.00-20	290/95-20	8.0-20		●	●							1,009	250	7,550	6,000	5,000
11.00-20	300/95-20	8.0-20		●								1,040	260	8,230	6,540	5,450
12.00-20	330/95-20	8.0-20		●	●							1,090	260	9,515	7,560	6,300
12.00-20	330/95-20	8.0-20	Smooth	●								1,090	260	9,515	7,560	6,300
12.00-20	330/95-20	8.5-20		●	●							1,090	260	9,515	7,560	6,300
12.00-20	330/95-20	10.0-20		●	●	●						1,090	313	9,815	7,800	6,500
355/50-20		10.0-20		▼	▼	▼	■	▼				834	310	10,420	8,970	6,900
355/50-20		10.0-20	Smooth	▼	▼							834	310	10,420	8,970	6,900
12.00-24	330/95-24	8.5-24		●	●							1,181	295	10,120	8,040	6,700
12.00-24	330/95-24	10.0-24		●	●	●						1,181	295	11,325	9,000	7,500
14.00-24	385/95-24	10.0-24		●	●							1,325	331	13,970	11,100	9,250
16.00-25	445/95-25	11.25-25		●	●							1,445	410	18,875	15,000	12,500

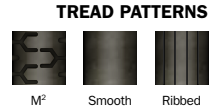
* ProHD heavy duty load bonus

** ProTEX not currently available with Pit Stop Line

TREAD PATTERNS



Size	Alternative Size	Rim	Alternative Pattern	Tire type & Compound availability				● STD ■ LOC ▼ BOTH			Product Dimensions [mm]		Load Capacity [kg]		
				Multi Purpose	Non Marking	Electrically Conducting	ProTEX**	ProHD*	ProENERGY (HL)	Oil Resistant (SCBR)	Overall Diameter	Section Width	Other	Counterbalanced Lift Trucks up to 25 km/h	
													Static	Load Wheel	Steering Wheel
10½x4-6		3.25I-6	Ribbed only	●	●						268	104	710	610	470
4.00-8		2.50-8	Ribbed only	●	●						409	104	1,100	950	730
4.00-8		3.00D-8	Ribbed only	▼	▼						409	104	1,100	950	730
4.00-8		3.56-8	Ribbed only	●							408	125	1,175	1,010	775
4.00-8		3.75P-8		●	●						408	125	1,175	1,010	775
4.00-8		3.75P-8	Ribbed	●	●						408	125	1,175	1,010	775
15x4½-8	125/75-8	3.00D-8		▼	▼	■	■				376	117	1,210	1,040	800
15x4½-8	125/75-8	3.00D-8	Ribbed	▼	●						376	117	1,210	1,040	800
5.00-8		3.00D-8		▼	▼						457	122	1,650	1,415	1,090
5.00-8		3.00D-8	Ribbed		●						457	122	1,650	1,415	1,090
5.00-8		3.75P-8		●	●						457	152	1,740	1,495	1,150
5.00-8		3.75P-8	Ribbed	●	●						457	152	1,740	1,495	1,150
16x6-8	150/75-8	4.33R-8		▼	▼	■	■				406	152	1,740	1,495	1,150
17x7-8		4.33R-8	Smooth only	●							430	159	2,160	1,860	1,430
18x7-8	180/70-8	4.33R-8		▼	▼	▼	■				457	157	2,490	2,145	1,650
18x9-8		7.00-8	Smooth Only	●	●						457	207	2,870	2,470	1,900
140/55-9	15x5.5-9	4.00E-9		▼	▼	■	■				380	132	1,360	1,170	900
140/55-9	15x5.5-9	4.00E-9	Ribbed	▼	■						380	132	1,360	1,170	900
6.00-9		4.00E-9		▼	▼	●					526	140	2,190	1,885	1,450
6.00-9		4.00E-9	Ribbed	●							526	140	2,190	1,885	1,450
21x8-9	200/75-9	6.00E-9		▼	▼	■	■				518	185	3,200	2,755	2,120
6.50-10		5.00F-10		▼	▼				▼		577	160	2,720	2,340	1,800
6.50-10		5.50F-10		●	●						577	160	2,720	2,340	1,800
180/60-10		5.00F-10		▼	■						458	157	2,795	2,410	1,850
200/50-10		6.50F-10		▼	▼	■	■				457	191	2,870	2,470	1,900
23x9-10	225/75-10	6.50F-10		▼	▼	■	■				584	201	4,000	3,445	2,650
7.00-12		5.00S-12		▼	▼	▼			▼		650	173	3,380	2,920	2,240
7.00-12		5.00S-12	Smooth	●							650	173	3,380	2,920	2,240
23x10-12	250/60-12	8.00G-12		▼	▼	■	■				587	239	4,380	3,770	2,900
27x10-12	250/75-12	8.00G-12		▼	▼	■			▼		678	239	4,530	3,900	3,000



Size	Alternative Size	Rim	Alternative Pattern	Tire type & Compound availability				● STD ■ LOC ▼ BOTH			Product Dimensions [mm]		Load Capacity [kg]		
				Multi Purpose	Non Marking	Electrically Conducting	ProTEX**	ProHD*	ProENERGY (HL)	Oil Resistant (SCBR)	Overall Diameter	Section Width	Other	Counterbalanced Lift Trucks up to 25 km/h	
													Static	Load Wheel	Steering Wheel
315/45-12		10.00G-12		▼	▼	▼	▼				572	279	5,210	4,485	3,450
7.00-15	29x8-15	5.5-15		▼	▼						729	180	4,115	3,545	2,725
7.50-15		5.5-15		●							747	193	4,530	3,900	3,000
7.50-15		6.5-15		●					●		747	193	4,530	3,900	3,000
8.25-15		5.5-15		●							810	208	5,360	4,615	3,550
8.25-15		6.5-15		▼	▼		■	▼		■	810	208	5,510	4,750	3,650
28x9-15	225/75-15	6.5-15		●							693	224	4,530	3,900	3,000
28x9-15	225/75-15 (8.15-15)	7.0-15		▼	▼						693	224	4,530	3,900	3,000
250-15	250/70-15	7.0-15		▼	▼	■		▼			711	224	5,510	4,745	3,650
250-15	250/70-15	7.5-15		▼	▼			●			711	224	5,510	4,745	3,650
280/50-15		8.0-15	Ribbed only	■							670	255	6,040	5,200	4,000
300-15	315/70-15	8.0-15		▼	▼		■	▼			813	257	6,795	5,850	4,500
355/45-15	28x12½-15	9.75-15		▼	■			■			683	288	6,610	5,690	4,375
355/50-15		9.75-15		▼	▼						711	284	6,610	5,690	4,375
355/65-15	32x12½-15 (350-15)	9.75-15		▼	▼			▼	■		808	282	9,060	7,800	6,000
400/60-15		11.00-15	M² VP15	●	●						815	325	10,420	8,970	6,900
7.50-16	250/80-16	5.5-16		●	●						808	208	4,645	4,000	3,075
8.25-20		6.50-20	Military	●							954	230	5,510	4,380	3,650
9.00-20	270/95-20	6.5-20		●							973	221	6,795	5,400	4,500
10.00-20	290/95-20	6.5-20		●							1011	249	7,365	5,850	4,875
10.00-20	290/95-20	8.0-20		●	●						1011	249	7,550	6,000	5,000
12.00-20	330/95-20	8.0-20		●	●						1092	259	9,515	7,560	6,300
12.00-20	330/95-20	8.0-20	Smooth	●							1092	259	9,515	7,560	6,300
12.00-20	330/95-20	8.5-20		●							1092	259	9,515	7,560	6,300
12.00-20	330/95-20	8.5-20	Smooth						●		1092	259	9,515	7,560	6,300
12.00-20	330/95-20	10.0-20		●	●						1090	312	9,815	7,800	6,500
12.00-20	330/95-20	10.0-20	Smooth	●							1090	312	9,815	7,800	6,500
355/50-20		10.0-20		▼	▼		■				833	310	10,420	8,970	6,900
355/50-20		10.0-20	Smooth	▼	▼			▼			833	310	10,420	8,970	6,900

* ProHD heavy duty load bonus

** ProTEX not currently available with Pit Stop Line

Trelleborg Premia

HIGH INTENSITY RESILIENT

TREAD PATTERNS



Premia



Size	Alternative Size	Rim	Alternative Pattern	Tire type & Compound availability ● STD ■ LOC ▼ BOTH			
				Multi Purpose	Non Marking	Electrically Conducting	Oil Resistant (SCBR)
15x4½-8	125/75-8	3.00D-8		▼	▼	▼	
15x4½-8	125/75-8	3.00D-8	Ribbed	▼	▼		
5.00-8		3.00D-8		▼	▼	▼	
16x6-8	150/75-8	4.33R-8		▼	▼	●	
18x7-8	180/70-8	4.33R-8		▼	▼	▼	
140/55-9	15x5.5-9	4.00E-9		▼	▼	▼	
6.00-9		4.00E-9		▼	▼	▼	
21x8-9	200/75-9	6.00E-9		▼	▼	●	
6.50-10		5.00F-10		▼	▼	▼	
200/50-10		6.50F-10		▼	▼	▼	
23x9-10	225/75-10	6.50F-10		▼	▼	▼	
7.00-12		5.00S-12		▼	▼	▼	
23x10-12	250/60-12	8.00G-12		▼	▼		
27x10-12	250/75-12	8.00G-12		▼	▼	●	
7.00-15	29x8-15	5.5-15		▼	▼	●	
8.25-15		6.5-15		▼	▼	▼	
28x9-15	225/75-15 (8.15-15)	7.0-15		▼	▼	●	
250-15	250/70-15	7.0-15		▼	▼	●	■
250-15	250/70-15	7.5-15		▼	▼		
300-15	315/70-15	8.0-15		▼	▼	▼	■
355/45-15	28x12½-15	9.75-15		▼	▼		
355/50-15		9.75-15		▼			
355/65-15	32x12½-15 (350-15)	9.75-15		▼	■		

Product Dimensions [mm]		Load Capacity [kg]		
Overall Diameter	Section Width	Other	Counterbalanced Lift Trucks up to 25 km/h	
		Static	Load Wheel	Steering Wheel
380	115	1,210	1,040	800
380	115	1,210	1,040	800
451	121	1,650	1,415	1,090
412	151	1,740	1,495	1,150
457	146	2,490	2,145	1,650
381	130	1,360	1,170	900
528	142	2,190	1,885	1,450
516	188	3,200	2,755	2,120
571	165	2,720	2,340	1,800
457	194	2,870	2,470	1,900
583	208	4,000	3,445	2,650
657	168	3,380	2,920	2,240
575	230	4,380	3,770	2,900
676	230	4,530	3,900	3,000
723	186	4,115	3,545	2,725
813	203	5,510	4,750	3,650
700	206	4,530	3,900	3,000
713	211	5,510	4,745	3,650
713	211	5,510	4,745	3,650
814	241	6,795	5,850	4,500
692	287	6,610	5,690	4,375
713	283	6,610	5,690	4,375
818	300	9,060	7,800	6,000

Mastersolid

MEDIUM INTENSITY RESILIENT

TREAD PATTERNS



MS



Size	Alternative Size	Rim	Alternative Pattern	Tire type & Compound availability ● STD ■ LOC ▼ BOTH		Product Dimensions [mm]		Load Capacity [kg]		
				Multi Purpose	Non Marking	Overall Diameter	Section Width	Other	Counterbalanced Lift Trucks up to 25 km/h	
								Static	Load Wheel	Steering Wheel
3.00-4		2.10-4	MIL	●	●	250	83	295	260	195
3.00-4		2.50C-4	MIL	●		250	83	295	260	195
4.00-8		3.00D-8		▼	▼	404	104	1,100	950	730
10x3-6		2.5-6	MIL	●	●	250	84	260	220	170
12x4-6		2.5-6	MIL	●	●	303	91	570	485	375
15x4½-8	125/75-8	3.00D-8		▼	▼	377	104	1,210	1,040	800
5.00-8		3.00D-8		▼	▼	459	115	1,650	1,415	1,090
16x6-8	150/75-8	4.33R-8		▼	▼	407	132	1,740	1,495	1,150
18x7-8	180/70-8	4.33R-8		▼	▼	454	145	2,490	2,145	1,650
140/55-9	15x5.5-9	4.00E-9		▼	▼	380	132	1,360	1,170	900
6.00-9		4.00E-9		▼	▼	519	131	2,190	1,885	1,450
21x8-9	200/75-9	6.00E-9		▼	▼	523	168	3,200	2,755	2,120
6.50-10		5.00F-10		▼	▼	574	148	2,720	2,340	1,800
200/50-10		6.50F-10		■	■	456	186	2,870	2,470	1,900
23x9-10	225/75-10	6.50F-10		▼	▼	584	210	4,000	3,445	2,650
7.00-12		5.00S-12		▼	▼	650	162	3,380	2,920	2,240
23x10-12	250/60-12	8.00G-12		▼	▼	581	228	4,380	3,770	2,900
27x10-12	250/75-12	8.00G-12		▼	▼	672	228	4,530	3,900	3,000
7.00-15	29x8-15	5.5-15		▼	▼	725	186	4,115	3,545	2,725
7.50-15		5.5-15		▼		755	187	4,530	3,900	3,000
7.50-15		6.5-15		●		755	187	4,530	3,900	3,000
8.25-15		6.5-15		▼	▼	823	202	5,510	4,750	3,650
28x9-15	225/75-15 (8.15-15)	7.0-15		▼	▼	681	202	4,530	3,900	3,000
250-15	250/70-15	7.0-15		▼	▼	720	210	5,510	4,745	3,650
250-15	250/70-15	7.5-15		●	●	720	210	5,510	4,745	3,650
300-15	315/70-15	8.0-15		▼	▼	822	250	6,795	5,850	4,500
465/55-20		16.0-20		●		1,029	465	13,590	10,800	9,000



Size	Alternative Size	Rim	Tire type & Compound availability ● STD ■ LOC ▼ BOTH		Product Dimensions [mm]		Load Capacity [kg]		
			Multi Purpose	Non Marking	Overall Diameter	Section Width	Other	Counterbalanced Lift Trucks up to 25 km/h	
							Static	Load Wheel	Steering Wheel
4.00-8		3.00D-8	▼	▼	398	94	1,100	950	730
15x4½-8	125/75-8	3.00D-8	▼	▼	373	110	1,210	1,040	800
5.00-8		3.00D-8	▼	▼	452	114	1,650	1,415	1,090
16x6-8	150/75-8	4.33R-8	▼	▼	409	143	1,740	1,495	1,150
18x7-8	180/70-8	4.33R-8	▼	▼	445	147	2,490	2,145	1,650
140/55-9	15x5.5-9	4.00E-9	▼	▼	380	132	1,360	1,170	900
6.00-9		4.00E-9	▼	▼	520	130	2,190	1,885	1,450
21x8-9	200/75-9	6.00E-9	▼	▼	51=4	180	3,200	2,755	2,120
6.50-10		5.00F-10	▼	▼	568	153	2,720	2,340	1,800
200/50-10		6.50F-10	▼	▼	450	175	2,870	2,470	1,900
23x9-10	225/75-10	6.50F-10	▼	▼	574	187	4,000	3,445	2,650
7.00-12		5.00S-12	▼	▼	646	163	3,380	2,920	2,240
23x10-12	250/60-12	8.00G-12	▼	■	570	219	4,380	3,770	2,900
27x10-12	250/75-12	8.00G-12	▼	▼	670	235	4,530	3,900	3,000
7.00-15	29x8-15	5.5-15	▼	▼	717	162	4,115	3,545	2,725
7.50-15		6.5-15	▼	▼	743	186	4,530	3,900	3,000
8.25-15		6.5-15	▼	▼	803	192	5,510	4,750	3,650
28x9-15	225/75-15 (8.15-15)	7.0-15	▼	▼	680	200	4,530	3,900	3,000
250-15	250/70-15	7.0-15	▼	▼	709	206	5,510	4,750	3,650
250-15	250/70-15	7.5-15	▼	■	709	206	5,510	4,750	3,650
300-15	315/70-15	8.0-15	▼	▼	807	244	6,795	5,850	4,500
355/65-15	32x12½-15 (350-15)	9.75-15	▼	■	809	260	9,060	7,800	6,000



Ecosolid



Size	Alternative Size	Rim	Tire type & Compound availability ● STD ■ LOC ▼ BOTH		Product Dimensions [mm]		Load Capacity [kg]		
			Multi Purpose		Overall Diameter	Section Width	Other	Counterbalanced Lift Trucks up to 25 km/h	
							Static	Load Wheel	Steering Wheel
15x4½-8	125/75-8	3.00D-8	▼		372	103	1,210	1,040	800
5.00-8		3.00D-8	▼		457	122	1,650	1,415	1,090
16x6-8	150/75-8	4.33R-8	▼		408	143	1,740	1,495	1,150
18x7-8	180/70-8	4.33R-8	▼		450	143	2,490	2,145	1,650
140/55-9	15x5.5-9	4.00E-9	▼		370	127	1,360	1,170	900
6.00-9		4.00E-9	▼		508	140	2,190	1,885	1,450
21x8-9	200/75-9	6.00E-9	▼		508	185	3,200	2,755	2,120
6.50-10		5.00F-10	▼		559	163	2,720	2,340	1,800
200/50-10		6.50F-10	▼		447	186	2,870	2,470	1,900
23x9-10	225/75-10	6.50F-10	▼		571	190	4,000	3,445	2,650
7.00-12		5.00S-12	▼		660	168	3,380	2,920	2,240
23x10-12	250/60-12	8.00G-12	▼		571	224	4,380	3,770	2,900
27x10-12	250/75-12	8.00G-12	▼		656	230	4,530	3,900	3,000
7.00-15		5.5-15	▼		711	178	4,115	3,545	2,725
8.25-15		6.5-15	▼		787	206	5,510	4,750	3,650
28x9-15	225/75-15 (8.15-15)	7.0-15	▼		686	204	4,000	3,445	2,650
250-15	250/70-15	7.0-15	▼		704	216	5,510	4,745	3,650
300-15	315/70-15	8.0-15	▼		812	254	6,795	5,850	4,500
355/65-15	32x12½-15(350-15)	9.75-15	▼		809	278	9,060	7,800	6,000

TR-900

MAXIMUM INTENSITY RADIAL PNEUMATIC

TREAD PATTERNS



TR-900



Size	Alternative Size	Rim	Product Dimensions [mm]			Minimal Dual Spacing [mm]	Inflation Pressure [bar]	Tire Type	Load Index	Speed Symbol	Load Capacity [kg]	
			Overall Diameter	Section Width	Tread Depth						Counterbalanced Lift Trucks up to 25 km/h	
											Load Wheel	Steering Wheel
5.00R8		3.00D-8	468	137	25	158	10.00	Tube Type	111	A5	1,415	1,090
6.00R9		4.00E-9	540	162	25	192	10.00	Tube Type	121	A5	1,885	1,450
6.50R10		5.00F-10	585	180	27	212	10.00	Tube Type	128	A5	2,340	1,800
7.00R12		5.00S-12	670	190	28	230	10.00	Tube Type	136	A5	2,915	2,240
28x9R15	225/75R15 (8.15R15)	7.0-15	706	230	25	248	10.00	Tube Type	149	A5	4,225	3,250
7.00R15	29x8R15	5.5-15	736	195	28	236	10.00	Tube Type	143	A5	3,540	2,725
250R15	250/70R15	7.0-15	736	252	27	282	10.00	Tube Type	153	A5	4,745	3,650
300R15	315/70R15	8.0-15	835	312	36	345	10.00	Tube Type	165	A5	6,695	5,150
8.25R15		6.5-15	838	232	32	281	10.00	Tube Type	153	A5	4,745	3,650
10.00R20	290/95R20	7.5-20	1,062	294	35	334	10.00	Tube Type	166	A5	6,890	5,300
12.00R20	330/95R20	8.5-20	1,136	320	41	378	10.00	Tube Type	176	A5	9,230	7,100
12.00R24	330/95R24	8.5-24	1,232	322	39	378	10.00	Tube Type	178	A5	9,750	7,500
14.00R24	385/95R24	10.0-24	1,416	390	64	450	10.00	Tube Type	193	A5	14,950	11,500

T-900

MAXIMUM INTENSITY BIAS PNEUMATIC

TREAD PATTERNS



T-900



Size	Alternative Size	Ply Rating	Rim	Product Dimensions [mm]			Minimal Dual Spacing [mm]	Inflation Pressure [bar]	Tire Type	Load Index	Speed Symbol	Load Capacity [kg]	
				Overall Diameter	Section Width	Tread Depth						Counterbalanced Lift Trucks up to 25 km/h	
												Load Wheel	Steering Wheel
5.00-8		10	3.00D-8	468	140	13	158	10.00	Tube Type	111	A5	1,415	1,090
18x7-8	180/70-8	16	4.33R-8	462	168	16	199	10.00	Tube Type	125	A5	2,145	1,650
6.00-9		12	4.00E-9	543	160	15	192	10.00	Tube Type	121	A5	1,885	1,450
23x9-10	225/75-10	20	6.50F-10	585	230	19	259	10.00	Tube Type	142	A5	3,445	2,650
6.50-10		12	5.00F-10	590	182	18	212	9.00	Tube Type	125	A5	2,145	1,650
23x10-12	250/60-12	20	8.00G-12	600	245	22	293	10.00	Tube Type	145	A5	3,770	2,900
7.00-12		14	5.00S-12	680	191	18	230	9.00	Tube Type	134	A5	2,755	2,120
7.00-12		16	5.00S-12	680	191	18	230	10.00	Tube Type	136	A5	2,910	2,240
27x10-12	250/75-12	16	8.00G-12	685	250	22	293	8.00	Tube Type	146	A5	3,900	3,000
27x10-12	250/75-12	24	8.00G-12	685	250	22	293	10.40	Tube Type	155	A5	5,040	3,875
28x9-15	225/75-15 (8.15-15)	14	7.0-15	710	230	18	248	10.00	Tube Type	146	A5	3,900	3,000
250-15	250/70-15	20	7.0-15	742	240	19	282	10.00	Tube Type	155	A5	5,040	3,875
7.00-15	29x8-15	14	5.5-15	760	204	20	236	8.80	Tube Type	140	A5	3,275	2,520
7.50-15		16	6.0-15	778	215	21	254	10.00	Tube Type	146	A5	3,900	3,000
7.50-16	250/80-16	12	6.00G-16	805	220	21	254	8.00	Tube Type	144	A5	3,630	2,790
300-15	315/70-15	20	8.0-15	840	290	23	345	9.00	Tube Type	164	A5	6,500	5,000
8.25-15		14	6.5-15	841	247	19	281	8.00	Tube Type	149	A5	4,225	3,250
8.25-15		16	6.5-15	841	247	19	281	9.30	Tube Type	152	A5	4,615	3,550
355/65-15	32x12½-15 (350-15)	24	9.75-15	843	334	29	407	10.00	Tube Type	170	A5	7,800	6,000
355/65-15	32x12½-15 (350-15)	32*	9.75-15	843	334	29	407	12.50	Tube Type	177	A5	9,490	7,300
9.00-20	270/95-20	14	7.0-20	1,015	265	27	311	9.00	Tube Type	160	A5	5,850	4,500
10.00-20	290/95-20	16	7.5-20	1,085	294	32	334	9.00	Tube Type	164	A5	6,500	5,000
11.00-20	300/95-20	18	8.0-20	1,110	302	33	352	10.00	Tube Type	170	A5	7,800	6,000
12.00-20	330/95-20	20	8.0-20	1,145	325	35	372	10.00	Tube Type	175	A5	8,970	6,900
12.00-20	330/95-20	24	8.0-20	1,145	325	35	372	10.40	Tube Type	178	A5	9,710	7,470
12.00-20	330/95-20	28	8.0-20	1,145	325	35	372	10.90	Tube Type	180	A5	10,400	8,000
12.00-24	330/95-24	20	8.5-24	1,245	320	35	378	10.00	Tube Type	178	A5	9,750	7,500
12.00-24	330/95-24	24	8.5-24	1,245	320	35	378	10.40	Tube Type	178	A5	9,945	7,650
14.00-24	385/95-24	24	10.00W-24	1,360	380	39	450	10.00	Tube Type	186	A5	12,350	9,500
14.00-24	385/95-24	24*	10.00W-24	1,360	380	39	450	10.00	Tubeless	186	A5	12,350	9,500
14.00-24	385/95-24	28	10.00W-24	1,360	380	39	450	10.40	Tube Type	186	A5	12,600	9,690

* Requires special rim & components, please check with your local Trelleborg representative

Mitas FL-08

MEDIUM INTENSITY BIAS PNEUMATIC



Size	Alternative Size	Ply Rating	Rim	Product Dimensions [mm]		
				Overall Diameter	Section Width	Tread Depth
				4.00-8	4.80-8	8
4.00-8	4.80-8	10	3.25I-8	414	112	6
5.00-8	5.70-8	8	3.00D-8	467	132	11
5.00-8	5.70-8	10	3.00D-8	467	132	11
16x6-8	150/75-8	16	4.33R-8	425	152	12
18x7-8	180/70-8 (18x7)	14	4.33R-8	462	173	14
18x7-8	180/70-8 (18x7)	16	4.33R-8	462	173	14
6.00-9	6.90-9	10	4.00E-9	540	160	13
6.00-9	6.90-9	12	4.00E-9	540	160	13
21X8-9	200/75-9	16	6.00E-9	535	200	15
6.50-10		10	5.00F-10 (5.50F-10)	588	177	14
6.50-10		12	5.00F-10 (5.50F-10)	588	177	14
6.50-10		14	5.00F-10 (5.50F-10)	588	177	14
23x9-10	225/75-10	20	6.50F-10	595	225	16
7.00-12		12	5.00S-12	672	192	15
7.00-12		14	5.00S-12	672	192	15
7.00-12		16	5.00S-12	672	192	15
250/75-12	27x10-12	14	8.00G-12	681	261	18
250/75-12	27x10-12	16	8.00G-12	681	261	18
250/75-12	27x10-12	20	8.00G-12	681	261	18
8.15-15	28x9-15	14	7.0-15	707	216	18
250-15	250/70-15	18	7.50-15	735	250	20
250-15	250/70-15	20	7.50-15	735	250	20
7.00-15	29x8-15	14	5.50-15	743	191	18
7.50-15		14	6.0-15 (6.5-15)	772	212	21
7.50-15		16	6.0-15 (6.5-15)	772	212	21
8.25-15		18	6.5-15	836	234	23
300-15	315/70-15	22	8.00-15	840	300	23

Minimal Dual Spacing [mm]	Inflation Pressure [bar]	Tire Type	Load Index	Speed Symbol	Load Capacity [kg]	
					Counterbalanced Lift Trucks up to 25 km/h	
					Load Wheel	Steering Wheel
138	9.00	Tube Type	94	A5	870	670
138	10.00	Tube Type	97	A5	950	730
158	8.25	Tube Type	106	A5	1235	950
158	10.00	Tube Type	111	A5	1415	1090
175	10.00	Tube Type	113	A5	1495	1150
199	9.00	Tube Type	121	A5	1885	1450
199	10.00	Tube Type	125	A5	2145	1650
192	8.50	Tube Type	118	A5	1715	1320
192	10.00	Tube Type	121	A5	1885	1450
230	10.00	Tube Type	134	A5	2755	2120
212 (218)	7.75	Tube Type	122	A5	1950	1500
212 (218)	9.00	Tube Type	125	A5	2145	1650
212 (218)	10.00	Tube Type	128	A5	2340	1800
259	10.00	Tube Type	142	A5	3440	2650
230	8.50	Tube Type	133	A5	2680	2060
230	9.00	Tube Type	134	A5	2755	2120
230	10.00	Tube Type	136	A5	2910	2240
293	7.00	Tube Type	143	A5	3545	2725
293	8.00	Tube Type	146	A5	3900	3000
293	10.00	Tube Type	152	A5	4615	3550
248	10.00	Tube Type	146	A5	3900	3000
288	9.50	Tube Type	153	A5	4745	3650
288	10.00	Tube Type	155	A5	5040	3875
236	9.25	Tube Type	140	A5	3250	2500
254 (260)	9.25	Tube Type	144	A5	3640	2800
254 (260)	10.00	Tube Type	146	A5	3900	3000
281	10.00	Tube Type	153	A5	4745	3650
345	10.00	Tube Type	165	A5	6695	5150

T-800

MEDIUM INTENSITY BIAS PNEUMATIC

TREAD PATTERNS



T-800



Size	Alternative Size	Ply Rating	Rim	Product Dimensions [mm]			Inflation Pressure [bar]	Tire Type	Load Index	Speed Symbol	Load Capacity [kg]	
				Overall Diameter	Section Width	Tread Depth					Counterbalanced Lift Trucks up to 25 km/h	
											Load Wheel	Steering Wheel
15x4½-8	125/75-8	12	3.25-8	385	122	8	10.00	Tube Type	100	A5	1,040	800
18x7-8	180/70-8	16	4.33R-8	453	160	17	10.00	Tube Type	125	A5	2,145	1,650
5.00-8		10	3.00D-8	465	135	13	10.00	Tube Type	111	A5	1,415	1,090
21x8-9	200/75-9	14	6.00E-9	536	204	18	9.00	Tube Type	131	A5	2,535	1,950
6.00-9		12	4.00E-9	540	155	13	10.00	Tube Type	121	A5	1,885	1,450
23x9-10	225/75-10	20	6.50F-10	585	228	19	10.00	Tube Type	142	A5	3,445	2,650
6.50-10		10	5.00F-10	597	183	14	7.80	Tube Type	122	A5	1,950	1,500
7.00-12		14	5.00S-12	685	196	15	9.00	Tube Type	134	A5	2,755	2,120
27x10-12	250/75-12	14	8.00G-12	691	245	21	7.00	Tube Type	143	A5	3,545	2,725
28x9-15	225/75-15 (8.15-15)	14	7.0-15	722	217	20	10.00	Tube Type	146	A5	3,900	3,000
7.00-15	29x8-15	14	5.5-15	755	190	17	9.30	Tube Type	140	A5	3,250	2,500
250-15	250/70-15	20	7.0-15	760	240	21	10.30	Tube Type	155	A5	5,040	3,875
7.50-15		14	6.0-15	808	215	17	9.30	Tube Type	144	A5	3,640	2,800
8.25-15		14	6.5-15	834	255	18	8.00	Tube Type	149	A5	4,225	3,250
300-15	315/70-15	20	8.0-15	840	290	25	9.40	Tube Type	164	A5	6,500	5,000

Mitas Utility Trucks

MEDIUM INTENSITY BIAS PNEUMATIC

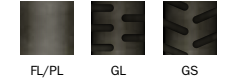


Size	Profile Code	Ply Rating	Rim	Product Dimensions [mm]			Minimal Dual Spacing [mm]	Inflation Pressure [bar]	Tire Type	Load Index	Speed Symbol	Load Capacity [kg]		
				Overall Diameter	Section Width	Tread Depth						Single Mounting	Dual Mounting	Speed km/h
6.70-13	Mitas CT-01	6	5Kx13	662	180	10	214	3.25	Tube Type	94/93	E	670	650	70
6.70-13	Mitas CT-02	6	5Kx13	662	180	12	214	3.25	Tube Type	94/93	E	670	650	70
7.50-16	Mitas CT-06	10	6.00G-16 SDC (5.50F-16 SDC; 5.50F-16 CD)	806	210	15.5	242	4.75	Tubeless	116/114	L	1250	1180	120
7.50-16	Mitas CT-06	10	6.00G-16 SDC (5.50F-16 SDC; 5.50F-16 CD)	806	210	15.5	242	4.75	Tube Type	116/114	L	1250	1180	120
7.50-16	Mitas NB37	10	6.00G-16 SDC (5.50F-16 SDC; 5.50F-16 CD)	806	210	16	242	4.75	Tube Type	116/114	L	1250	1180	120
7.50-16	Mitas NB60	10	6.00G-16 SDC (5.50F-16 SDC; 5.50F-16 CD)	806	210	14	242	4.75	Tubeless	116/114	L	1250	1180	120
7.50-16	Mitas NB60	10	6.00G-16 SDC (5.50F-16 SDC; 5.50F-16 CD)	806	210	14	242	4.75	Tube Type	116/114	L	1250	1180	120
7.50-16	Mitas NB60	12	6.00G-16 SDC (5.50F-16 SDC; 5.50F-16 CD)	806	210	14	242	6.50	Tube Type	121/120	L	1450	1400	120
6.50-20	Mitas NB37	10	5.50x20 DC (5.5-20)	870	181	14	210	5.25	Tube Type	115/113	L	1215	1150	120
6.50-20	Mitas NB60	10	5.0-20; 5.50x20 DC (5.5-20)	870	181	12	210	5.25	Tubeless	115/113	L	1215	1150	120
6.50-20	Mitas NB60	10	5.0-20; 5.50x20 DC (5.5-20)	870	181	12	210	5.25	Tube Type	115/113	L	1215	1150	120
6.50-20	Mitas NB62	10	5.50x20 DC (5.5-20)	870	181	14	210	5.25	Tubeless	115/113	L	1215	1150	120
6.50R20	Mitas NR21	10	5.0-20 (5.5-20)	870	181	13	238	5.50	Tubeless	115/113	L	1215	1150	120
6.50R20	Mitas NR36	10	5.0-20 (5.5-20)	870	181	12	238	5.50	Tubeless	115/113	L	1215	1150	120
8.25-20	Mitas NB41	14	6.50-20 (6.0-20, 7.0-20)	970	234	17	269	6.75	Tube Type	133/131	J	2060	1950	100
8.25-20	Mitas NB59	14	6.50-20 (6.0-20, 7.0-20)	970	234	15	269	6.75	Tube Type	133/131	J	2060	1950	100
8.25-20	Mitas NB60	14	6.50-20 (6.0-20, 7.0-20)	970	234	15	269	6.75	Tube Type	133/131	J	2060	1950	100
8.25-20	Mitas NT8	10	6.00T-20 (6.0-20, 500S-20)	970	234	22	269	5.25	Tube Type	123/122	F	1550	1500	75
9.00-20	Mitas NB41	14	7.00-20 (6.5-20, 7.5-20)	1012	256	17	297	7.00	Tube Type	140/137	J	2500	2300	100
9.00-20	Mitas NB59	14	7.00-20 (6.5-20, 7.5-20)	1012	256	16	297	7.00	Tube Type	140/137	J	2500	2300	100
9.00-20	Mitas NB60	14	7.00-20 (6.5-20, 7.5-20)	1012	256	15	297	7.00	Tube Type	140/137	J	2500	2300	100
10.00-20	Mitas NB41	16	7.5-20 (7.0-20; 8.0-20)	1050	275	18	316	7.50	Tube Type	146/143	J	3000	2725	100
10.00-20	Mitas NB59	16	7.5-20 (7.0-20; 8.0-20)	1050	275	17	316	7.50	Tube Type	146/143	J	3000	2725	100
10.00-20	Mitas NB59	18	7.5-20 (7.0-20; 8.0-20)	1050	275	17	316	9.00	Tube Type	149/145	F	3250	2900	80
10.00-20	Mitas NB59	18	7.5-20 (7.0-20; 8.0-20)	1050	275	17	316	9.00	Tube Type	149/145	F	3250	2900	80
10.00-20	Mitas NB60	16	7.5-20 (7.0-20; 8.0-20)	1050	275	16	316	7.50	Tube Type	146/143	J	3000	2725	100
11.00-20	Mitas NB41	16	8.0-20 (7.5-20; 8.5-20)	1080	291	20	335	7.25	Tube Type	149/145	J	3250	2900	100
11.00-20	Mitas NB59	16	8.0-20 (7.5-20; 8.5-20)	1080	291	19	335	7.25	Tube Type	149/145	J	3250	2900	100
11.00-20	Mitas NB60	16	8.0-20 (7.5-20; 8.5-20)	1080	291	17	335	7.25	Tube Type	149/145	J	3250	2900	100
11.00-20	Mitas NT9	16	8.0-20 (7.5-20; 8.5-20)	1080	291	22	335	7.25	Tube Type	149/145	J	3250	2900	100
12.00-20	Mitas NB59	18	8.5-20 (8.0-20; 9.0-20)	1120	312	20	355	7.75	Tube Type	154/149	J	3750	3250	100
12.00-20	Mitas NB60	18	8.5-20 (8.0-20; 9.0-20)	1120	312	17	355	7.75	Tube Type	154/149	J	3750	3250	100
13.00-18	Mitas T02		9Ax18	1128	370	17		4.50	Tube Type	140	K	2500		110

Trelleborg Press On Solid inch

HIGH INTENSITY POS

TREAD PATTERNS

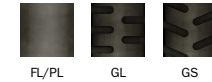


Size	Metric Size	▼ Smooth Crowned ■ Smooth Flat ◆ Traction Flat										Load Capacity [kg]						
		Multi Purpose		Non Marking		Electrically Conducting	ProENERGY (Hg)	Rolling Resistant	Oil Resistant (Scrib)	ProHiD (Lion)	Cut Resistant	Other Vehicles up to			@ 25 km/h			
												@ 6 km/h	@ 10 km/h	@ 16 km/h	Load Wheel	Steering Wheel		
9x5x5	229x127x127	■			■									960	790	680	695	570
10x4x6½	254x102x159	■												780	640	560	565	465
10x4x6½	254x102x165	■			■			■						780	640	555	565	465
10x5x6½	254x127x165	■			■				■					1,010	830	725	735	605
10½x5x6½	267x127x165	■	◆		◆									1,070	880	770	780	640
13x3½x8	330x89x203	◆			◆									785	645	615	570	470
13x4½x8	330x114x203	◆	■		◆	■								1,120	920	800	815	670
13x5x8	330x127x203	◆			◆			◆						1,290	1,060	920	935	765
13½x5½x8	343x140x203	■	◆		◆			◆						1,510	1,240	1,080	1,095	895
14x4½x8	356x114x203	▼	■	◆	▼	■	◆		■	◆	■	◆		1,170	960	830	850	695
14x5x10	356x127x254	■			■									1,335	1,095	955	970	795
15½x5x10	394x127x254	■	◆		◆									1,470	1,210	1,050	1,070	875
16x5x10½	406x127x267	▼	■	◆	▼	■	◆		■	◆	■	◆		1,510	1,240	1,080	1,095	895
16x6x10½	406x152x267	▼	■	◆	▼	■	◆	■	◆	■	◆	■	◆	1,910	1,570	1,360	1,390	1,140
16x7x10½	406x178x267	◆			◆			◆		◆		◆		2,325	1,910	1,660	1,685	1,380
15x5x11¼	381x127x286	■	▼	◆	■	▼	◆	■	◆	■	◆	■	◆	1,390	1,140	990	1,010	830
15x6x11¼	381x152x286	■	◆		◆									1,715	1,410	1,225	1,245	1,020
16¼x5x11¼	413x127x286	▼	■	◆	▼	■	◆		◆		■	◆		1,530	1,250	1,090	1,105	905
16¼x6x11¼	413x152x286	▼	■	◆	▼	■	◆	◆	■	◆	■	◆		1,920	1,580	1,370	1,395	1,140
16¼x7x11¼	413x178x286	◆			◆			◆		◆		◆		2,325	1,900	1,650	1,680	1,380
17x4½x12½	432x114x308	◆			◆									1,370	1,130	980	995	815
17x5x12½	432x127x308	■	◆		◆									1,570	1,290	1,120	1,145	935
17x6x12½	432x152x308	◆			◆									1,980	1,630	1,410	1,435	1,180
18x5x12½	457x127x308	■	◆		■	◆		■	◆	■		■	◆	1,640	1,350	1,170	1,195	980
18x6x12½	457x152x308	▼	■	◆	▼	■	◆	◆	■	◆	■	◆		2,100	1,720	1,500	1,525	1,250
18x7x12½	457x178x308	■	▼	◆	■	▼	◆	◆	■	◆	■	◆		2,550	2,100	1,820	1,855	1,520
18x8x12½	457x203x308	▼	■	◆	▼	■	◆	◆	■	◆	■	◆		3,000	2,475	2,150	2,180	1,790
18x9x12½	457x229x308	■	◆		■	◆		◆		◆		◆		3,450	2,850	2,475	2,510	2,060
21x6x15	533x152x381	◆						◆						2,350	1,930	1,680	1,710	1,400
21x7x15	533x178x381	▼	■		▼	■		■		■		■		2,875	2,350	2,050	2,085	1,710

Trelleborg Press On Solid inch CONTINUED

HIGH INTENSITY POS

TREAD PATTERNS



Size	Metric Size	▼ Smooth Crowned ■ Smooth Flat ◆ Traction Flat											Load Capacity [kg]						
		Multi Purpose			Non Marking			Electrically Conducting		ProENERGY (Hg)		Rolling Resistant		Other vehicles up to			@ 25 km/h		
		▼	■	◆	▼	■	◆	◆	■	◆	■	■	◆	@ 6 km/h	@ 10 km/h	@ 16 km/h	Load Wheel	Steering Wheel	
21x8x15	533x203x381	▼	■	◆	▼	■	◆	◆	■	◆	■	◆	■	◆	3,375	2,775	2,425	2,455	2,015
21x9x15	533x229x381	■	◆		■	◆		■	◆	■	◆	■	◆	3,900	3,200	2,775	2,830	2,320	
22x7x16	559x178x406	■	◆		■	◆		■	◆					2,975	2,450	2,125	2,160	1,770	
22x8x16	559x203x406	▼	■	◆	▼	■	◆		■	◆	■	◆		3,500	2,875	2,500	2,545	2,085	
22x9x16	559x229x406	■	◆		■	◆		■		■	◆	■	◆	4,050	3,325	2,875	2,930	2,400	
22x10x16	559x254x406	■	◆		■	◆				■	◆	■	◆	4,575	3,750	3,250	3,315	2,720	
22x12x16	559x305x406	■	◆		■	◆		■	◆	■	◆	■	◆	5,625	4,625	4,025	4,090	3,350	
22x14x16	559x356x406	■			■					■				6,700	5,505	4,785	4,865	3,990	
22x16x16	559x406x406	■								■				7,745	6,360	5,530	5,625	4,610	
22x6x17½	559x152x451	■												2,345	1,925	1,675	1,700	1,395	
26x7x20	660x178x508	■								■				3,375	2,775	2,400	2,445	2,005	
28x10x22	711x254x559	■			■			■		■		■		5,470	4,490	3,905	3,970	3,255	
28x12x22	711x305x559	■	◆		■	◆				■	◆	■		6,740	5,540	4,820	4,900	4,015	
28x14x22	711x356x559	■			■					■				8,020	6,590	5,720	5,820	4,780	
28x16x22	711x406x559	■			■					■				9,270	7,620	6,620	6,730	5,520	
40x12x30	1016x305x762									■				8,760	7,170	5,690	6,030	5,010	
40x14x30	1016x356x762				■					■				10,610	8,675	6,890	7,300	6,060	

Trelleborg Press On Solid mm

HIGH INTENSITY POS

TREAD PATTERNS



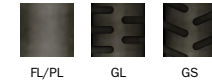
Size	▼ Smooth Crowned ■ Smooth Flat ◆ Traction Flat									
	Multi Purpose	Non Marking	Electrically Conducting	ProENERGY (Hg)	Rolling Resistant	Wear Resistant	Oil Resistant	Deflection Resistant		
125x50x75	■									
150x50x100	■	■			■					
150x75x100	■			■						
160x50x100	■			■	■					
200x75x100	■	■			■					
200x85x105	■									
200x130x105	■									
170x45x120					■					
180x75x120	■	■			■					
175x50x125					■					
200x50x140	■	■								
250x75x140	■	■	■	■	■	■			■	
250x130x140	■	◆	■	◆						
260x75x140	■					■			■	
280x75x140	■					■				
254x90x145	■	■								
250x90x150	■	■								
220x60x160	■				■					
230x75x170	■	■								
250x80x170	■	■	■	■	■				■	
250x105x170	■	■	■	■	■	■				
260x85x170	■	◆	◆	■	◆		■	■	■	
260x105x170	■	◆	■	◆						
260x130x170	■		■							
300x85x170	■				■	■			■	
315x145x180	■									
330x145x180	■									
250x50x190	■									
250x85x190	■		■							
330x145x194	■									
300x90x203	■		■	■	■					
300x100x203	◆	■	◆	■		■			■	
313x130x203	■	◆	◆							
280x75x220	■			■	■					
285x75x220	■			■	■					
310x60x220	■			■						
300x75x225	■									
300x75x240	■			■	■					
360x60x270	■									
360x75x270	■									
360x85x270	■		■		■	■				
450x120x300	■			■						

Load Capacity [kg]				
Other Vehicles up to			Counterbalanced Lift Trucks up to 25 km/h	
@ 6 km/h	@ 10 km/h	@ 16 km/h	Load Wheel	Steering Wheel
160	130	100		
225	180	135		
375	300	230		
250	200	150		
500	400	300		
550	440	330		
880	725	660		
195	160	140		
475	380	290		
225	185	160		
350	280	210		
625	500	400		
1,065	875	800	775	635
630	510	385		
630	505	385		
670	545	395		
670	545	395		
450	360	270		
625	500	380		
675	540	410		
780	645	700	570	465
775	620	465		
825	675	615		
1,065	875	795		
800	640	480		
1,480	1,215	1,055		
1,540	1,265	1,100		
450	360	270		
745	595	455		
1,535	1,260	1,095		
900	720	540		
870	715	650	635	520
1,260	1,035	945		
705	565	425		
725	580	440		
650	520	390		
725	585	445		
700	560	420		
750	600	450		
950	760	570		
1,050	840	630		
1,495	1,230	1,120		

Trelleborg Press On Solid mm CONTINUED

HIGH INTENSITY POS

TREAD PATTERNS



Size	▼ Smooth Crowned ■ Smooth Flat ◆ Traction Flat								
	Multi Purpose	Non Marking	Electrically Conducting	ProENERGY (Hg)	Rolling Resistant	Wear Resistant	Oil Resistant	Deflection Resistant	
405x65x305	■				■				
405x130x305	■	◆			■				
405x220x305	▼		▼	▼					
405x260x305	■				■				
415x75x305	■				■	■			
415x90x305	■								
415x100x305	■				■				
425x150x305	■		■		■				
425x260x305	■		■		■				
425x300x305					■				
450x260x305	■				■				
450x300x305	■				■				
440x200x330	■								
500x85x370	■				■				
500x100x370	■				■				
500x140x370	■	■			■				
500x280x370					■				
520x120x370	■		■						
550x120x410	■							■	
550x160x410	■				■				
610x100x410	■								
610x150x410	■								
620x200x410	■				■				
630x180x410	■	■			■				
645x250x410	■		■		■				
645x300x410	■	■			■				
645x350x410			■		■				
670x200x410					■				
680x150x470	■								
710x300x470					■				
645x200x480	■	■			■				
660x203x480	◆				◆	◆			
660x250x480	◆	◆							
660x280x480					■				
705x180x485	■								
760x250x500	■				■				
780x200x555	■	■			■				
840x350x559	■	■							
854x320x600	■	■			■				
926x240x670		■			■				
968x240x670					■				

Load Capacity [kg]				
Other Vehicles up to			Counterbalanced Lift Trucks up to 25 km/h	
@ 6 km/h	@ 10 km/h	@ 16 km/h	Load Wheel	Steering Wheel
900	720	540		
1,510	1,240	1,135	1,095	900
2,760	2,265	1,970		
3,325	2,730	2,495	2,415	1,980
1,000	800	590		
1,060	875	760		
1,115	915	835	810	665
1,910	1,570	1,435	1,385	1,135
3,620	2,970	2,720	2,630	2,155
4,200	3,450	3,000	3,050	2,500
3,620	2,965	2,585	2,865	2,350
4,265	3,490	3,045	3,375	2,765
2,710	2,225	2,030		
1,300	1,050	785		
1,270	1,040	955		
1,995	1,640	1,495		
4,535	3,725	3,405		
1,670	1,370	1,255	1,215	995
1,750	1,440	1,315	1,270	1,040
2,550	2,100	1,915	1,855	1,520
1,265	1,040	950		
2,505	2,055	1,880	1,815	1,490
3,790	3,110	2,840	2,745	2,250
3,300	2,710	2,475		
4,810	3,930	3,430	3,305	2,745
6,060	4,960	4,330	4,170	3,460
7,315	5,985	5,225	5,035	4,180
3,940	3,235	2,955		
2,690	2,210	2,020		
6,525	5,340	4,660		
3,865	3,175	2,900	2,800	2,295
3,695	3,025	2,645	2,545	2,110
4,780	3,910	3,415	3,290	2,735
5,510	4,510	3,580	3,795	3,150
3,590	2,950	2,695		
5,440	4,450	3,885	3,740	3,105
4,485	3,685	3,365	3,255	2,665
9,010	7,370	5,850	6,200	5,150
8,165	6,680	5,835		
5,970	4,885	4,265		
6,095	4,985	4,350		

Monarch Press On Solid

HIGH INTENSITY POS



Size	Metric Size	▼ Smooth Crowned ■ Smooth Flat ● Traction Crowned ◆ Traction Flat ▽ Traction Wide												
		Multi Purpose			Non Marking			ProHiD		Electrically Conducting		Oil Resistant		
8½x4x4	216x102x102	▼			▼									
9x5x5	229x127x127	▼			▼			▼						
10x3x6¼	254x76x159	▼			▼									
10x6x6¼	254x152x159	▼			▼									
10x7x6¼	254x178x159	▼			▼									
10x4x6½	254x102x165	▼			▼									
10x5x6½	254x127x165	▼			▼			▼						
10½x5x6½	267x127x165	▼	●											
12x3½x8	305x89x203	▼												
12x4x8	305x102x203	▼										▼		
12x4½x8	305x114x203	▼			▼									
12x5½x8	305x140x203	▼			▼			▼		▼				
13x4½x8	330x114x203	▼	▽		▽									
13½x4½x8	343x114x203	▼			▼									
13½x5½x8	343x140x203	▼	■	◆	●	▼	●	◆	▼					
13½x6½x8	343x165x203	▼			▼									
14x4½x8	356x114x203	▼	●	▽	▼	●		▼						
14x5x10	356x127x254	▼	●		▼	●								
15½x5x10	394x127x254	●			●									
15½x6x10	394x152x254	●			●									
16x5x10½	406x127x267	▼	●	▽	▼	●		▽	▼	▼				
16x6x10½	406x152x267	▼	■	●	▽	▼	■	▽	●	▼		▼	▽	
16x7x10½	406x178x267	■	●	▽	■	●	▽		■	■		■	▽	
15x4x11¼	381x102x286	▼			▼									
15x5x11¼	381x127x286	▼	●		▼	●		▼		▼				
15x6x11¼	381x152x286	▼												
15x7x11¼	381x178x286	▼						▼						
15x8x11¼	381x203x286				▼									
16¼x4x11¼	413x101x286	●										▽		
16¼x5x11¼	413x127x286	▼	●		▼	●								

Load Capacity [kg]				
Other Vehicles			Counterbalanced Lift Trucks up to 25 km/h	
@ 6 km/h	@ 10 km/h	@ 16 km/h	Load Wheel	Steering Wheel
695	575	500		
960	790	680	695	570
1,365	1,120	955		
1,270	1,040	910	925	755
1,515	1,245	1,085		
780	640	555	565	465
1,010	830	725	735	605
1,070	880	770	780	640
760	620	595	590	450
905	745	680	660	540
1,045	860	745		
1,335	1,095	950		
1,120	920	800	815	670
1,150	940	820	835	685
1,510	1,240	1,080	1,095	895
1,865	1,530	1,330		
1,170	960	830	850	695
1,335	1,095	955	970	795
1,470	1,210	1,050	1,070	875
1,870	1,530	1,330	1,355	1,110
1,510	1,240	1,080	1,095	895
1,910	1,570	1,360	1,390	1,140
2,325	1,910	1,660	1,685	1,380
2,735	2,245	1,915		
1,390	1,140	990	1,010	830
1,715	1,410	1,225	1,245	1,020
2,055	1,690	1,470		
2,385	1,960	1,705		
1,130	925	805		
1,530	1,250	1,090	1,105	905

Monarch Press On Solid CONTINUED

HIGH INTENSITY POS



Size	Metric Size	▼ Smooth Crowned ■ Smooth Flat ● Traction Crowned ◆ Traction Flat ▽ Traction Wide												
		Multi Purpose			Non Marking			ProHD		Electrically Conducting	Oil Resistant			
16¼x6x11¼	413x152x286	●	▼	▽	●	▼	▽	▼	▽	▽	●	▽		
16¼x7x11¼	413x178x286	▼	●		▼	●								
16x3½x12%	406x89x308	▼												
16x4x12%	406x102x308	▼			▼									
17x6x12%	432x152x308	●			●									
18x5x12%	457x127x308	▼	●		▼	●					●			
18x6x12%	457x152x308	▼	▽		▼	▽		●	▼		▽			
18x7x12%	457x178x308	●	▼	■	▽	●	▼	■	▽	●	▼	●	▽	
18x8x12%	457x203x308	▼	●	▽	▼	●	▽	▼	●		▼			
18x9x12%	457x229x308	▼	●	▽	▼	●	▽			▼				
21x6x15	533x152x381	▼	●	▽	▼	●								
21x7x15	533x178x381	▼	■	●	▽	▼	■	●	▽	▼	●	▽	●	▽
21x8x15	533x203x381	▼	■	●	▽	▼	■	●	▽	▼	▽	▼	●	
21x9x15	533x229x381	■	▼	●	▽	■	▼	●	▽	■	▼			
20x8x16	508x203x406	▼	●		▼									
20x9x16	508x229x406	▼												
22x6x16	559x152x406	▽												
22x7x16	559x178x406	▼	●		▼									
22x8x16	559x203x406	▼	●	▽	▼	●		▼	●					
22x9x16	559x229x406	▼	●	▽	▼	●	▽	▼		●				
22x10x16	559x254x406	▼			▼									
22x12x16	559x305x406	▼	●		▼	●		▼		▼	●			
22x6x17¾	559x152x451	▽			▽									
28x10x22	711x254x559	▼	●		▼	●								
28x12x22	711x305x559	▼	●		▼	●		▼	●					
28x14x22	711x356x559	▼			▼									
28x16x22	711x406x559	▼												
36x12x30	914x305x762	▼												
36x16x30	914x406x762	■												

Load Capacity [kg]				
Other Vehicles			Counterbalanced Lift Trucks up to 25 km/h	
@ 6 km/h	@ 10 km/h	@ 16 km/h	Load Wheel	Steering Wheel
1,920	1,580	1,370	1,395	1,140
2,325	1,900	1,650	1,680	1,380
940	770	670		
1,120	920	800	810	665
1,980	1,630	1,410	1,435	1,180
1,640	1,350	1,170	1,195	980
2,100	1,720	1,500	1,525	1,250
2,550	2,100	1,820	1,855	1,520
3,000	2,475	2,150	2,180	1,790
3,450	2,850	2,475	2,510	2,060
2,350	1,930	1,680	1,710	1,400
2,875	2,350	2,050	2,085	1,710
3,375	2,775	2,425	2,455	2,015
3,900	3,200	2,775	2,830	2,320
3,015	2,475	2,150		
3,435	2,820	2,455		
2,450	2,000	1,740	1,770	1,450
2,975	2,450	2,125	2,160	1,770
3,500	2,875	2,500	2,545	2,085
4,050	3,325	2,875	2,930	2,400
4,575	3,750	3,250	3,315	2,720
5,625	4,625	4,025	4,090	3,350
2,345	1,925	1,675	1,700	1,395
5,470	4,490	3,905	3,970	3,255
6,740	5,540	4,820	4,900	4,015
8,020	6,590	5,720	5,820	4,780
9,270	7,620	6,620	6,730	5,520
8,150	6,695	5,820		
11,230	9,225	8,020		



Ports and Harbours

PNEUMATIC TIRES
RESILIENT TIRES

Port Tires

MAXIMUM INTENSITY PNEUMATIC

TREAD PATTERNS



TR-900
16.00R25



Size	Product	Rim	■ Traction					Alternative Size	Ply Rating
			Straddle Carrier	RTG	Reach Stacker	Container Handler	Empty Container Handler		
12.00-20	T900	8.5-20						330/95-20	20
12.00-20	T900	8.5-20						330/95-20	24
12.00-20	T900	8.5-20						330/95-20	28
12.00-24	T900	8.5-24						330/95-24	20
12.00-24	T900	8.5-24						330/95-24	24
14.00-24	T900	10.00W-24		■	■	■	■	385/95-24	28
12.00R20	TR900	8.5-20						330/95R20	-
12.00R24	TR900	8.5-24						330/95R24	-
14.00R24	TR900	10.0-24			■	■	■	385/95R24	-
16.00R25	TR900	11.25-25/2.0	■					445/95R25	-

Product Dimensions [mm]			Inflation Pressure [bar]	Tire Type	Load Capacity [kg]					
Overall Diameter	Section Width	Tread Depth			Load Index	Speed Symbol	Other Vehicles		Counterbalanced Lift Trucks up to 25 km/h	
							RTG	Straddle Carrier @ 25km/h	Load Wheel	Steering Wheel
1145	325	35	10	Tube Type	175	A5	-	-	8970	6900
1145	325	35	10.4	Tube Type	178	A5	-	-	9710	7470
1151	323	35	10.9	Tube Type	180	A5	-	-	10400	8000
1245	320	35	10	Tube Type	178	A5	-	-	9750	7500
1245	320	35	10.4	Tube Type	178	A5	-	-	9945	7650
1360	380	39	10.4	Tube Type	186	A5	12600	-	12600	9690
1136	320	41	10	Tube Type	176	A5	-	-	9230	7100
1232	322	39	10	Tube Type	178	A5	-	-	9750	7500
1416	390	64	10	Tube Type	193	A5	-	-	14950	11500
1495	424	56	10	Tubeless	200	A5	-	14700	18200	14000

Inflation pressure

- Most tire damages are due to, or aggravated by, incorrect inflation pressures.
- Under-inflation causes over-heating and can greatly shorten the life of a tire. It reduces stability and can cause irregular wear, internal damage and, ultimately, even tire break-up.
- Over-inflation causes the tire to be more susceptible to impact damage and in extreme cases may result in rim deformation or even a tire burst.
- Inflation pressures must be checked regularly at least once a fortnight - These checks should be made only when tires are cold because pressure rises as they warm up in running. Never bleed warm tires.
- Cold inflation pressures must always comply with the vehicle or tire manufacturer's recommendations for the vehicle, type of tire and the intended service. Pressure increase during running, which may reach or even exceed 20%, is normal and is allowed for in the design of the tire. Therefore the inflation pressure of warm tires must never be adjusted back to the recommended (cold) values.
- Note that the valve cap, which must be of the sealing type, acts as a supplementary air seal and should be fitted at all times.

MAXIMUM INTENSITY RESILIENT

Size	Product	Rim	● Smooth	■ Traction	Alternative Size	Ply Rating
			Terminal Trailer	Counterbalance Lift Trucks		
11.00-20/8.0	Elite XP	8.0-20	■		300/95-20	-
12.00-20/8.0	Elite XP, M²	8.0-20	●■		330/95-20	-
12.00-20/8.5	Elite XP, M²	8.50-20	●■		330/95-20	-
16.00-25/11.25	Elite XP	11.25-25		■	445/95-25	-

Overall Diameter	Section Width	Tread Depth	Inflation Pressure	Tire Type	Load Index	Speed Index	Other Vehicles		Counterbalanced Lift Trucks up to 25 km/h	
							16km/h	25km/h	Load Wheel	Steering Wheel
1040	260	-	-	Resilient	167	A5	5670	6540		
1090	260	-	-	Resilient	172	A5	6550	6300		
1090	260	-	-	Resilient	172	A5	6550	6300		
1445	410			Resilient	196	A5	-	-	15000	12500



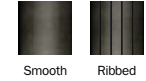
Ground Support Equipment

RESILIENT TIRES
PRESS ON SOLID TIRES
PNEUMATIC TIRES

GSE Resilient

HIGH INTENSITY RESILIENT

TREAD PATTERNS



Tire Size	Alternative Size	Rim Size	Pattern	Tire type & Compound availability ● STD ■ LOC ▼ BOTH				
				Kargo	Kargo NM	Kargo +	Kargo + HL	PBB
8-2	8x2-4	1.2-4	Smooth	●	●	●		
3.00-4		2.10-4	Ribbed	●		●		
3.00-4		2.50C-4	Ribbed	●		●		
4.00-4		2.50C-4	Ribbed	●	●	●		
10-2	10x2-6	1.2-6	Smooth	●		●		
10½x4-6		3.25I-6	Ribbed	●		●		
140/55-6		4.50E-06	Ribbed	●		●		
2.00-8/2.50		2.50-8	Smooth	●		●	●	
4.00-8		2.50-8	Ribbed	●		●		
4.00-8		3.00D-8	Ribbed	●		●		
4.00-8		3.75P-8	Ribbed	●		●		
15x4½-8	125/75-8	3.00D-8	Ribbed	▼		▼		
5.00-8		3.00D-8	Ribbed	▼	●	▼		
5.00-8		3.75P-8	Ribbed	●		●		
18x7-8	180/70-8	4.33R-8	Ribbed	▼		▼		
16x5-9/3.50		3.50-9	Ribbed	●		●		
6.00-9		4.00E-9	Ribbed	▼		●		
6.50-10		5.00F-10	Ribbed	▼		▼		
7.00-12		5.00S-12	Ribbed	▼		▼		
26x8.5-15/7.00		7.00-15	Ribbed	●		●		
40x14-16/10.00		10.00-16	Smooth					●
40x14-16/11.00		11.00-16	Smooth					●

Load Index	Speed Symbol	Product Dimensions [mm]		Load Capacity [kg]
		Overall Diameter	Section Width	Other Vehicles @ 25 km/h
52	A5	195	50	200
51	A5	252	80	195
51	A5	252	80	195
77	A5	304	95	412
56	A5	255	50	224
82	A5	267	102	470
101	A5	312	133	825
88	A2	309	103	225
97	A5	407	103	730
97	A5	405	107	730
99	A5	407	107	775
100	A5	380	105	800
111	A5	458	113	1,090
113	A5	456	119	1,150
125	A5	452	147	1,650
102	A5	410	125	845
121	A5	530	142	1,450
128	A5	572	158	1,800
136	A5	653	165	2,240
144	A5	657	216	2,830
184	A2	1,010	332	9,000
185	A2	1,010	332	9,250

GSE POS

MEDIUM INTENSITY POS

TREAD PATTERNS



Tire Size	Rim Size	Pattern	Tire type & Compound availability ■ Smooth Flat	
			Multi Purpose	Boarding Bridge (PBB)
365x160-220	160-220	Smooth	■	
18x4x14	4.0-14	Smooth	■	
28x10x22	10.0-22	Smooth	■	■
28x12x22	12.0-22	Smooth	■	■
28x14x22	14.0-22	Smooth	■	■
40x16x30	16.0-30	Smooth		■
40x20x30	20.0-30	Smooth		■

Overall Diameter	Section Width	Load Capacity [kg]
		Other Vehicles @ 25 km/h
365	160	1,545
457	102	1,005
711	254	4,490
711	305	5,540
711	356	6,590
1025	406	10,160
1025	508	13,180

GSE Pneumatic

MEDIUM INTENSITY PNEUMATIC



Size	Profile Code	Alternative Size	Ply Rating	Rim	Overall Diameter	Section Width	Tread Depth	Minimal Dual Spacing [mm]	Inflation Pressure [bar]	Tire Type	Load Index	Speed Symbol	Load per Tire Other Vehicles (kg)	Speed (km/h)
4.00-8	Mitas FL-03	4.80-8	6	3.00D-8	414	112	6	134	8	Tube Type	90	A5	600	25
4.00-8	Mitas FL-03	4.80-8	8	3.00D-8 (3.25I-8)	414	112	6	134 (138)	9	Tube Type	94	A5	670	25
4.00-8	Mitas FL-03	4.80-8	10	3.00D-8 (3.25I-8)	414	112	6	134 (138)	10	Tube Type	97	A5	730	25
5.00-8	Mitas FL-03	5.70-8	8	3.00D-8	467	132	6	158	8.25	Tube Type	106	A5	950	25
6.00-9	Mitas FL-02	6.90-9	10	4.00E-9	540	160	10	192	8.5	Tube Type	118	A5	1320	25
6.00-9	Mitas FL-02	6.90-9	12	4.00E-9	540	160	10	192	10	Tube Type	121	A5	1450	25
6.00-9	KARGO RIB	6.90-9	10	4.00E-9	547	157	18	192	8.5	Tube Type	118	A5	1320	25
6.50-10	Mitas FL-02		10	5.00F-10 (5.50F-10)	588	177	10	212 (218)	7.75	Tube Type	122	A5	1500	25
6.50-10	Mitas FL-02		12	5.00F-10 (5.50F-10)	588	177	10	212 (218)	9	Tube Type	125	A5	1650	25
6.50-10	KARGO RIB		10	5.00F-10 (5.50F-10)	583	169	18	212 (218)	7.75	Tube Type	122	A5	1500	25
7.00-12	Mitas FL-02		12	5.00S-12	672	192	10	230	8.5	Tube Type	133	A5	2060	25
7.00-12	Mitas FL-02		14	5.00S-12	672	192	10	230	9	Tube Type	134	A5	2120	25
23X5	Mitas FL-05		6	3.75P-13	635	155	9.5	186	6	Tube Type	106	B	950	50
23X5	Mitas FL-05		10	3.75P-13	635	155	9.5	186	8	Tube Type	118	B	1320	50
23X5	Mitas FL-07		6	3.75P-13	635	155	9.5	186	5.25	Tube Type	113	A5	1150	25
23X5	Mitas FL-07		10	3.75P-13	635	155	9.5	186	8	Tube Type	121	A5	1450	25
8.25-15	Mitas FL-06		14	6.5-15	836	234	12	281	8	Tube Type	149	A5	3250	25



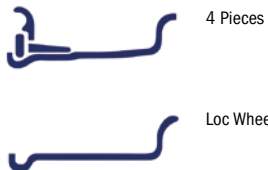
Industrial Wheels

Lock Ring Wheels

PREMIUM INDUSTRIAL WHEELS 8" - 15"

Diameter	Wheel Size	Tire Size
4"	2.50C-4	3.00-4
	2.50C-4	4.00-4
8"	3.00D-8	15x4½-8
	3.00D-8	4.00-8
	3.00D-8	5.00-8
	4.33R-8	16x6-8
	4.33R-8	18x7-8
9"	4.00E-9	140/55-9
	4.00E-9	6.00-9
	6.00E-9	21x8-9
10"	5.00F-10	180/60-10
	5.00F-10	6.50-10
	5.50F-10	6.50-10
	5.50F-10	7.50-10
	6.50F-10	200/50-10
	6.50F-10	23x9-10
12"	5.00S-12	6.00-12
	5.00S-12	7.00-12
	8.00G-12	23x10-12
	8.00G-12	27x10-12
15"	10.00G-12	315/45-12
	5.5-15	7.00-15
	5.5-15	7.50-15
	5.5-15	8.25-15
	6.0-15	7.00-15
	6.5-15	7.50-15
	6.5-15	8.25-15
	7.0-15	250-15
	7.0-15	28x9-15
	7.5-15	250-15
	8.0-15	300-15
9.75-15	355/45-15	
9.75-15	355/50-15	
9.75-15	355/65-15	
11.0-15	400/60-15	

Wheel Configuration

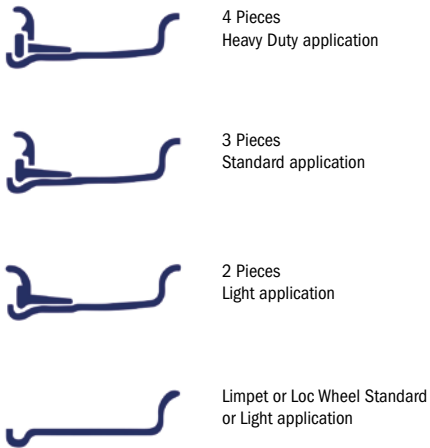


Lock Ring Wheels

PREMIUM INDUSTRIAL WHEELS 20" - 24"

Diameter	Wheel Size	Tire Size
20"	6.5-20	8.25-20
	6.5-20	9.00-20
	7.0-20	10.00-20
	7.0-20	9.00-20
	7.5-20	10.00-20
	7.5-20	31x10-20
	7.5-20	31x12-20
	7.5-20	36x14-20
	8.0-20	10.00-20
	8.0-20	11.00-20
	8.0-20	12.00-20
	8.5-20	12.00-20
	10.0-20	12.00-20
	10.0-20	355/50-20
24"	10.0-20	40x14-20
	16.0-20	465/55-20
	8.5-24	12.00-24
	10.0-24	12.00-24
10.0-24	14.00-24	

Wheel configuration



Split Wheels

PREMIUM INDUSTRIAL WHEELS 8" - 12"

Diameter	Wheel Size	Tire Size
8"	2.50C-8	4.00-8
	2.50C-8	15x4½-8
	3.00D-8	15x4½-8
	3.00D-8	4.00-8
	3.00D-8	5.00-8
	4.33R-8	18x7-8
9"	4.00E-9	140/55-9
	4.00E-9	6.00-9
10"	5.00F-10	180/60-10
	5.00F-10	6.50-10
12"	5.00S-12	6.00-12
	5.00S-12	7.00-12

Wheel configuration



LOCK RING
WHEELS
8" - 15"

LOCK RING
WHEELS
20" - 24"

SPLIT
WHEELS
8" - 12"

Press On Band Wheels

PREMIUM INDUSTRIAL WHEELS UP TO 30"

	Diameter	Wheel Size	Thickness
Min mm	160	50	4
Min inches	6	2	02
Max mm	1000	500	30
Max inches	30	20	1.2

Wheel Configuration



1 Piece

Earthmover Wheels

PREMIUM INDUSTRIAL WHEELS 25" - 33"

Diameter	Wheel Size	Tire Size
25"	11.25-25/2.0	16.00-25
	13.00-25/2.5	-
	14.00-25/1.5	17.5-25
	17.00-25/2.0	20.5-25
	19.50-25/2.5	23.5-25
	22.00-25/3.0	26.5-25
33"	25.00-25/3.5	29.5-25
	13.00-33/2.5	18.00-33

Wheel configuration



5 Pieces
Heavy Duty application



3 Pieces
Standard application

Drop Centre Wheels

PREMIUM INDUSTRIAL WHEELS UP TO 30"

Diameter	Wheel Size	Tire Size
12"	7.0-12	23x8½-12
15"	7.0-15	27x8½-15
16.5"	8.25-16.5	10-16.5
	9.75-16.5	12-16.5
17.5"	10.50-17.5	14-17.5
19.5"	11.75-19.5	15-19.5

Wheel configuration



1 Piece
Heavy Duty application



PRESS ON BAND WHEELS

EARTHMOVER WHEELS

DROP CENTRE WHEELS



Trelleborg is a world leader in engineered polymer solutions that seal, damp and protect critical applications in demanding environments. Our innovative engineered solutions accelerate performance for customers in a sustainable way. The Trelleborg Group has local presence in over 50 countries around the world.

WWW.TRELLEBORG.COM/WHEELS



facebook.com/Trelleborgmaterialhandling
linkedin.com/company/trelleborgwheelsystems
twitter.com/TrelleborgWheel



Trelleborg Wheel Systems Italia S.p.A.
Via Nazionale Tiburtina, 143 - 00010 Villa Adriana (RM) Italy
Phone: +39 0774 384701 - Fax: +39 0774 384702
www.trelleborg.com/wheels