

Cordiant has expanded its product portfolio of **Cordiant Professional** all-steel truck tyres with a new **VC-1** model in the standard size - **265/70R19.5**. The tyre is designed for use on all axles of buses and trucks with appropriate speed and load characteristics.

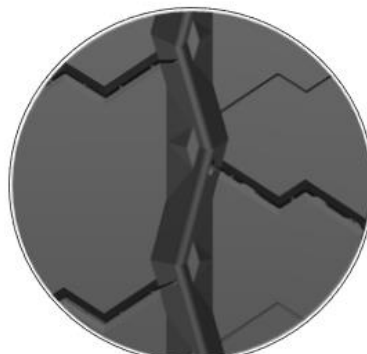
THE NEW 265/70R19.5 CORDIANT PROFESSIONAL VC-1 MODEL FEATURES:



- ✓ **Increased mileage.** Uniform tread abrasion during operation is ensured due to optimum design of the tyre profile and rubber compound formulation.
- ✓ **Reinforced sidewall.** A heavier rubber layer protects the tyre from contacting road curbs. Four side wear indicators enable to easily check the tyre wear.
- ✓ **Self-healing tread pattern.** The central part of the pattern has elements of complex shape forming additional lateral grooves when the tread abrasion exceeds 70% which ensures reliable traction and grip characteristics throughout the entire life cycle of the tyre.
- ✓ **Tyre protection from damage** by foreign objects due to the use of 3D stone ejectors in the tread grooves based on the **STONE-COR** technology.
- ✓ **The 3PMSF marking** confirms proven effective traction and grip characteristics of the tyre on snowy surfaces.
- ✓ **Load index 141 / 139M.** The increased index, compared to competitors, provides additional transport safety.



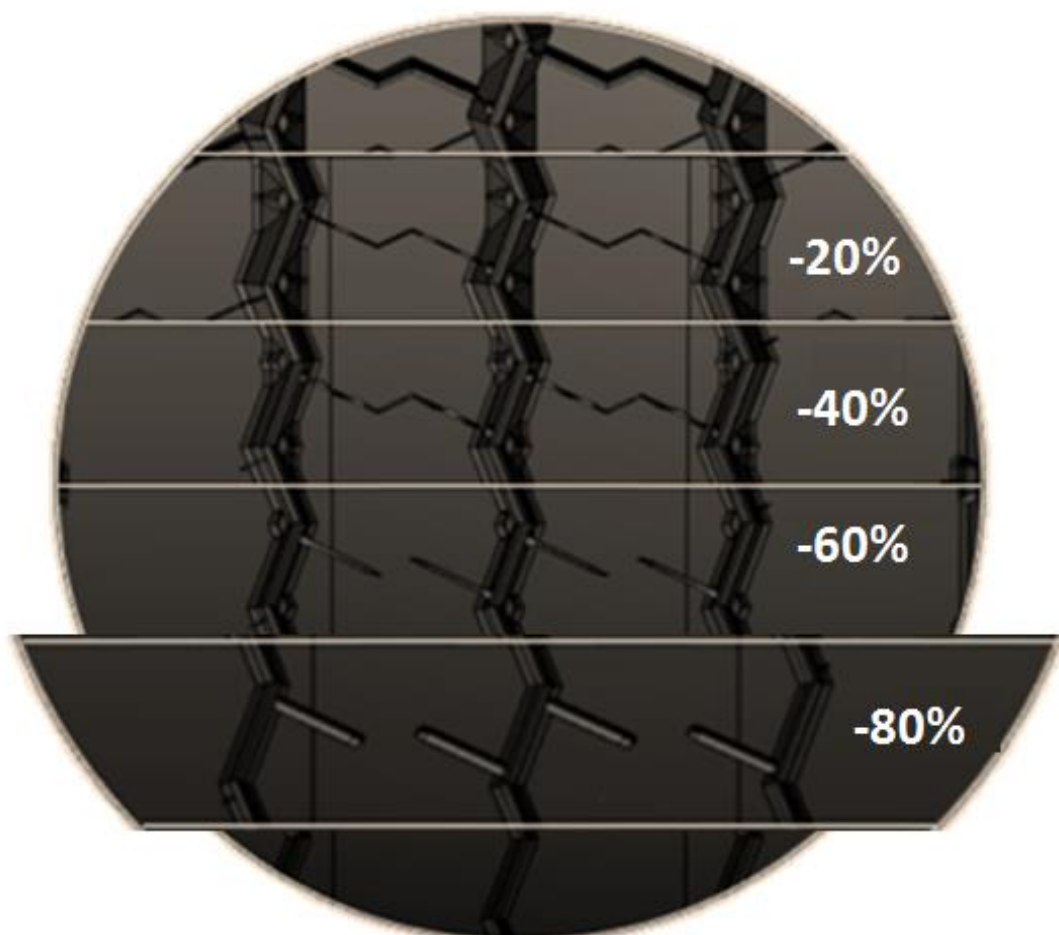
**SIDEWALL WEAR
INDICATOR**



**3D GEOMETRY OF THE TREAD
GROOVES**






3PMSF



TREAD PATTERN SELF-HEALING ON LOW RESIDUAL TREAD DEPTH

TECHNICAL CHARACTERISTICS

Load index	Speed index	Tread depth, mm	Recom. rim	Allowed rim	Profile width, mm				Pressure, bar (kPa)
141/139	130(M)	15.5	19.5x7.5 0	19.5x6.7 5 19.5x8.2 5	272	D	C	73	8.30 (830)