

Truck Tyres
From Matador

Ready
for the challenge



PRODUCT RANGE

Matador. A brand of Continental.



Product Portfolio

HIGHWAY/REGIONAL TRANSPORT

F

D

T

NEW

NEW

NEW



FHR4



DHR4



THR4

F

D

T



FH1



DH1



TH1



FH2

www.matador.tires/transport

Matador. A brand of Continental.



REGIONAL/URBAN/WINTER TRANSPORT

MIXED/CONSTRUCTION TRANSPORT



FR1



DR1



TR1



FM1



DM1



TM1



FR2



DR2



FM2



DM4



FR3



DR3



FM4



FU1



DW1

Highway/Regional Transport

The Matador brand is continuously adding size options to its new generation of truck tyres. The new HR 4 series offers increased mileage and reduced fuel consumption, making the tyres ideal for demanding transport operations on regional roads and highways.

The redesigned stable carcass serves as the basis for all Matador tyres in the new HR 4 series. Thanks to their reinforced belt cord, the tyres provide high durability and can be retreaded easily, boosting fleet efficiency.



FHR 4



- ▶ High mileage
- ▶ Improved wet performance
- ▶ Better driving control

Size	LI/SI
17.5"	
215/75 R17.5	126/124 M
245/70 R17.5	136/134 M
22.5"	
295/80 R 22.5	154/149 M
315/80 R22.5 (3PMSF) NEW	156/150 L (154/150 M)
315/70 R22.5	156/150 L (154/150 M)
385/65 R 22.5	160 K (158 L)
295/60 R22.5	150/147 L
315/60 R22.5	152/148 L
385/55 R 22.5	160 K (158 L)



DHR 4



- ▶ High mileage
- ▶ Impressive traction
- ▶ Higher durability

Size	LI/SI
17.5"	
215/75 R 17.5	126/124 M
245/70 R17.5 (no 3PMSF)	136/134 M
22.5"	
295/80 R 22.5	154/148 M
315/80 R22.5	156/150 L (154/150 M)
315/70 R22.5	156/150 L (154/150 M)
295/60 R22.5	150/147 L
315/60 R22.5	152/148 L

www.matador.tires/transport

Matador. A brand of Continental.



**NEW
GENERATION**



THR 4

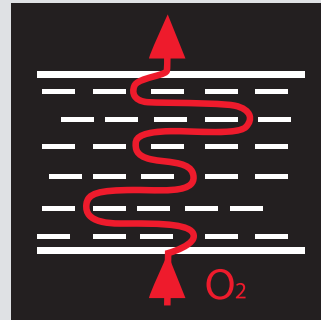


- ▶ High mileage
- ▶ Improved rolling resistance
- ▶ Better durability

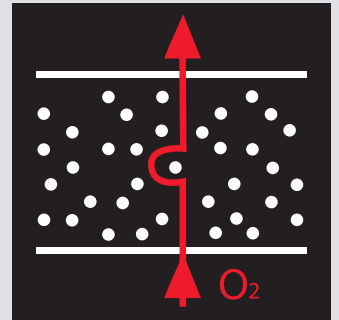
Size	LI/SI
17.5"	
215/75 R 17.5	135/133 K
235/75 R 17.5	143/141 K (144/144 F)
245/70 R 17.5	143/141 L (146/146 F)
205/65 R 17.5	127/125 J (127/127 F)
19.5"	
245/70 R 19.5	141/140 J
285/70 R 19.5	150/147 J
445/45 R 19.5	160/- J
22.5"	
385/65 R 22.5	160/- K (158/- L)
385/55 R 22.5	160/- K (158/- L)

Technology Highlights

New inner liner



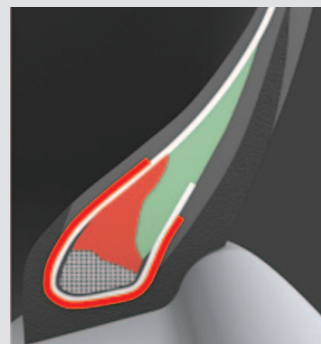
Inner liner HR 4 series



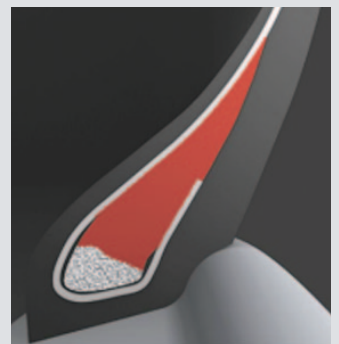
Standard-inner liner

New inner liner incorporating innovative filler system giving 50% more air tightness at similar gauge for better durability and retreadability.

Reinforced bead construction



Bead HR 4 series



Standard bead

The compact bead reinforcement with high cord density increases the durability of the tyre. It minimises the leverage effect on the sidewall resulting in reduced material fatigue.

Highway Transport



FH1



Size	LI/SI
22.5"	
295/80 R22.5	152/148 M
11 R22.5	148/145 L



FH2



Size	LI/SI
22.5"	
385/65 R22.5	158 L (160 J)



DH1



Size	LI/SI
22.5"	
295/80 R22.5	152/148 M
11 R22.5	148/145 L
12 R22.5	152/148 M



TH2



Size	LI/SI
22.5"	
215/75 R17.5	135/133 J
235/75 R17.5	143/141 J
245/70 R17.5	143/141 J

www.matador.tires/transport

Matador. A brand of Continental.



The professional all-rounder

Established in 1905 and re-born in 1993, Matador is known for its dynamic growth and wide portfolio of modern and efficient products. Matador brings you the true essence of central-European heritage. It is not only about the products, it is also about special people and the mission they pursue. They try to meet demanding requirements of drivers under all conditions. So with Matador tyres you are ready for any journey, no matter what the weather or conditions are. Because they have been developed by professionals.

As part of the prestigious Continental Group, Matador has a long tradition of meeting high quality requirements thanks to European competence in production and technology.

Matador milestones

- 1905** Matador Rubber and Balata Plant
- 1925** The first tyre produced under the Matador brand in Bratislava
- 1950** The "1 May" Tyre Factory opens
- 1990** Gumarne Barum Puchov – state joint stock company
- 1999** Foundation of joint venture for truck tyres production between Continental and Matador
- 2007** Continental AG acquires a majority holding in the MATADOR Rubber Division
- 2009** Complete control of shares by Continental AG



Regional Transport



FR1



Size	LI/SI
20"	
10.00 R 20	146/143 K
11.00 R 20	150/146 K
12.00 R 20	154/150 K



FR2



Size	LI/SI
17.5"	
205/75 R 17.5	124/122 M
235/75 R 17.5	132/130 L (130/128 M)
19.5"	
265/70 R 19.5	136/134 M (140/138 L)
285/70 R 19.5	145/143 M
22.5"	
295/80 R 22.5	152/148 M
275/70 R 22.5	148/145 L
10 R 22.5	144/142 L
11 R 22.5	148/145 L
12 R 22.5	152/148 L (150/148 M)



FR3



Size	LI/SI
17.5"	
215/75 R 17.5	126/124 M
225/75 R 17.5	129/127 M
19.5"	
245/70 R 19.5	136/134 M

www.matador.tires/transport

Matador. A brand of Continental.



DR1



Size	LI/SI
19.5"	
245/70 R19.5 (no 3PMSF)	136/124 M
265/70 R19.5 (no 3PMSF)	140/138 M
285/70 R19.5	144/143 M
20"	
10.00 R20 (no 3PMSF)	146/145 K
11.00 R20	150/146 K
22.5"	
275/70 R22.5	148/145 L
11 R22.5	148/145 L



DR2



Size	LI/SI
17.5"	
205/75 R17.5	124/122 M
235/75 R17.5	132/130 L (130/128 M)



DR3



Size	LI/SI
17.5"	
215/75 R17.5	126/124 M
225/75 R17.5	129/127 M



TR1



Size	LI/SI
19.5"	
265/70 R19.5 (M+S) NEW	143/141 J

Mixed/Construction Transport

Matador is launching a new generation of truck tyres. The new **FM 4** front axle tyre and new **DM 4** drive axle tyre are ideal for the demanding on and off road conditions of today's construction industry.

The Matador **FM 4** features a wide 4-groove tread pattern for very good mileage and even wear by combining modern material and design features. Good damage resistance and high overall durability are achieved by a robust carcass construction. A self-cleaning groove layout helps avoiding stone retention and offers better steering control.

The Matador **DM 4** and its enhanced pattern design and good overall rigidity provide superb traction. Moreover, the extremely durable casing and tread compound increase resistance to the intensive demands of construction sites and allow your vehicles to operate more efficiently.



FM 4



- ▶ Improved mileage, even wear picture
- ▶ High durability and resistance to damage
- ▶ Better self-cleaning

Size	LI/SI
22.5"	
315/80 R22.5	156/150 K
13 R22.5 (available 01/2019)	156/150 KL



DM 4



- ▶ Impressive traction thanks to four block tread pattern design
- ▶ Great durability
- ▶ Reliability

Size	LI/SI
22.5"	
315/80 R22.5	156/150 K
13 R22.5 (available 01/2019)	156/150 K

www.matador.tires/transport

Matador. A brand of Continental.



FM 1



Size	LI/SI
20"	
12.00 R 20	154/150 K
22.5"	
12 R 22.5	152/148 K
13 R 22.5 (M+S)	154/150 K (156/150 G)



FM 2



Size	LI/SI
22.5"	
315/80 R 22.5	156/150 K



DM 1



Size	LI/SI
20"	
12.00 R 20	154/149 K
22.5"	
12 R 22.5	152/148 K
13 R 22.5 (3MPSF)	154/150 K (156/150 G)



TM 1



Size	LI/SI
22.5"	
385/65 R 22.5	160 K

Urban/Winter Transport



FU 1



Size	LI/SI
22.5"	
295/80 R22.5	152/148 J
275/70 R22.5	148/145 J (151/148 E)



DW 1



Size	LI/SI
22.5"	
295/80 R22.5	152/148 M



www.matador.tires/transport

Matador. A brand of Continental.



Application Overview

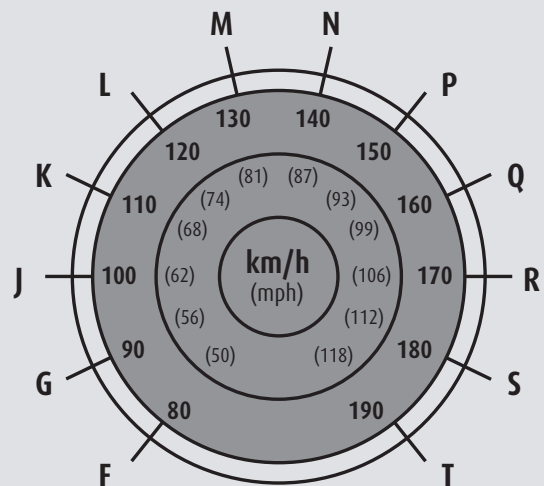
Size	HIGHWAY/REGIONAL TRANSPORT			HIGHWAY TRANSPORT				REGIONAL TRANSPORT					MIXED TRANSPORT					URBAN TRANSPORT	WINTER TRANSPORT			
	FHR4	DHR4	THR4	FH1	FH2	DH1	TH2	FR1	FR2	FR3	DR1	DR2	DR3	TR1	FM1	FM2	FM4	DM1	DM4	TM1	FU1	DW1
17.5"																						
205/75 R 17.5									•					•								
215/75 R 17.5	•	•	•					•		•				•								
225/75 R 17.5										•				•								
235/75 R 17.5			•					•		•				•								
245/70 R 17.5	•	•	•					•														
205/65 R 17.5			•																			
19.5"																						
245/70 R 19.5			•							•	•											
265/70 R 19.5										•	•			•								
285/70 R 19.5			•							•	•											
445/45 R 19.5			•																			
20"																						
10.00 R 20									•				•									
11.00 R 20									•				•									
12.00 R 20									•						•							
22.5"																						
295/80 R 22.5	•	•		•		•			•												•	•
315/80 R 22.5	•	•														•	•		•			
275/70 R 22.5										•		•									•	
315/70 R 22.5	•	•																			•	
385/65 R 22.5	•		•		•																•	
295/60 R 22.5	•	•																				
315/60 R 22.5	•	•																				
385/55 R 22.5	•		•																			
10 R 22.5										•												
11 R 22.5				•		•				•		•									•	
12 R 22.5						•				•											•	
13 R 22.5															•					•	•	

• in preparation

Load index (LI)

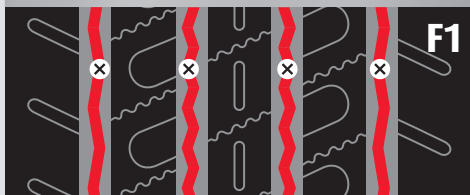
LI	KG	LI	KG	LI	KG
110	1060	132	2000	154	3750
111	1090	133	2060	155	3875
112	1120	134	2120	156	4000
113	1150	135	2180	157	4125
114	1180	136	2240	158	4250
115	1215	137	2300	159	4375
116	1250	138	2360	160	4500
117	1285	139	2430	161	4625
118	1320	140	2500	162	4750
119	1360	141	2575	163	4875
120	1400	142	2650	164	5000
121	1450	143	2725	165	5150
122	1500	144	2800	166	5300
123	1550	145	2900	167	5450
124	1600	146	3000	168	5600
125	1650	147	3075	169	5800
126	1700	148	3150	170	6000
127	1750	149	3250		
128	1800	150	3350		
129	1850	151	3450		
130	1900	152	3550		
131	1950	153	3650		

Speed index (SI)



Regrooving recommendations

F HR 4

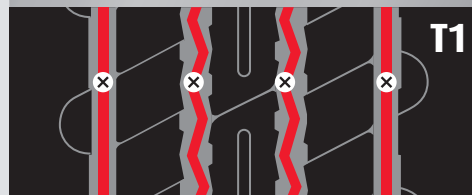


Pattern variants

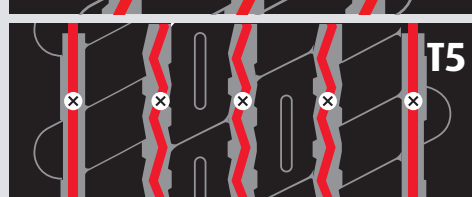
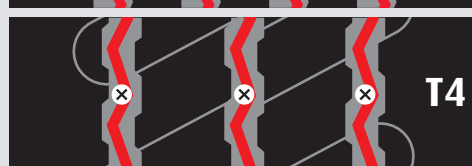
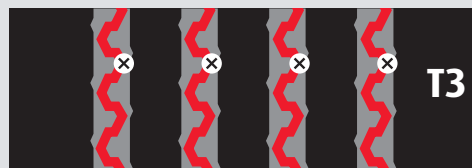


Size	Depth (mm)	Width (mm)
17.5"		
215/75 R 17.5 ^{F1}	3.0	10.0
245/70 R 17.5 ^{F3}	2.0	7.0
22.5"		
295/80 R 22.5 ^{F1}	3.0	10.0
315/80 R 22.5 ^{F1}	3.0	10.0
315/70 R 22.5 ^{F1}	3.0	10.0
385/65 R 22.5 ^{F1}	3.0	10.0
295/60 R 22.5 ^{F2}	3.5	9.0
315/60 R 22.5 ^{F2}	3.0	9.0
385/55 R 22.5 ^{F1}	3.0	10.0

T HR 4

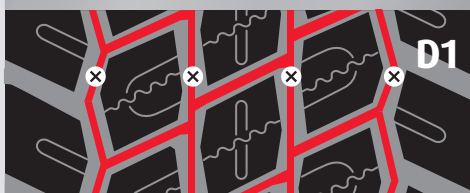


Pattern variants

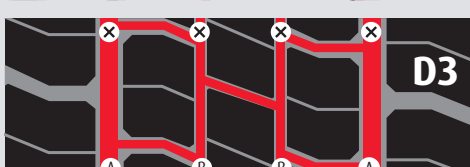
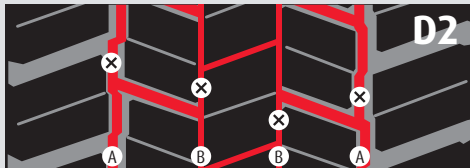


Size	Depth (mm)	Width (mm)
17.5"		
215/75 R 17.5 ^{T4}	2.5	8.0
235/75 R 17.5 ^{T4}	2.5	9.0
245/70 R 17.5 ^{T4}	2.5	9.0
205/65 R 17.5 ^{T3}	2.0	6.0
19.5"		
245/70 R 19.5 ^{T2}	3.0	7.0
285/70 R 19.5 ^{T2}	3.0	7.0
445/45 R 19.5 ^{T5}	2.5	9.0
22.5"		
385/65 R 22.5 ^{T1}	3.0	11.0
385/55 R 22.5 ^{T1}	3.0	10.0

D HR 4

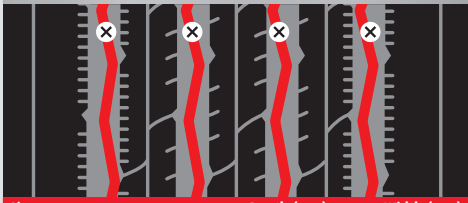


Pattern variants



Size	Depth (mm)	Width (mm)
17.5"		
215/75 R 17.5 ^{D1}	3.0	10.0
245/70 R 17.5 ^{D3}	2.0	A: 10.0, B: 5.0
22.5"		
295/80 R 22.5 ^{D1}	3.0	10.0
315/80 R 22.5 ^{D1}	3.0	7.0
315/70 R 22.5 ^{D1}	2.0	7.0
295/60 R 22.5 ^{D2}	3.0	A: 9.0, B: 5.0
315/60 R 22.5 ^{D2}	3.0	A: 9.0, B: 5.0

FH 1



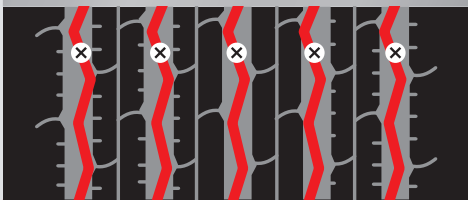
Size	Depth (mm)	Width (mm)
22.5"		
295/80 R22.5	4.0	8.0 - 10.0
11 R22.5	4.0	8.0 - 10.0

DH 1



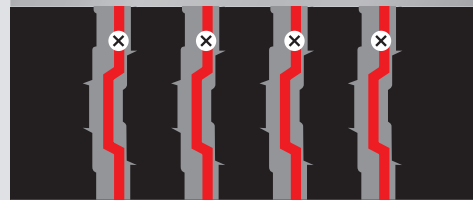
Size	Depth (mm)	Width (mm)
22.5"		
295/80 R22.5	3.0	7.0 - 8.0
11 R22.5	3.0	7.0 - 8.0
12 R22.5	3.0	7.0 - 8.0

FH 2

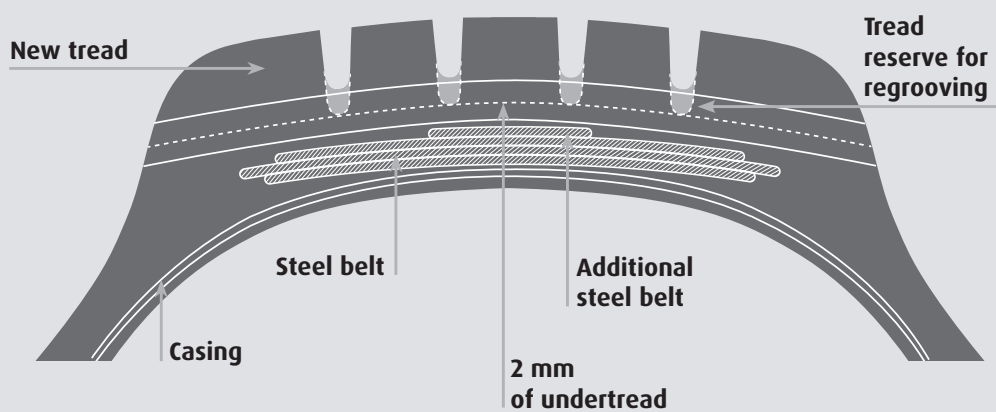


Size	Depth (mm)	Width (mm)
22.5"		
385/65 R22.5	4.0	7.0 - 9.0

TH 2



Size	Depth (mm)	Width (mm)
22.5"		
215/75 R17.5	4.0	8.0 - 9.0
235/75 R17.5	4.0	8.0 - 9.0
245/70 R17.5	4.0	8.0 - 9.0



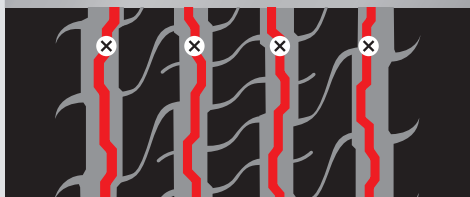
Regrooving recommendations

FR 1



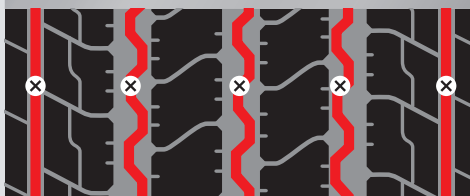
Size	Depth (mm)	Width (mm)
20"		
10.00 R20	4.0	7.0 - 9.0
11.00 R20	4.0	7.0 - 9.0
12.00 R20	4.0	7.0 - 9.0

FR 2



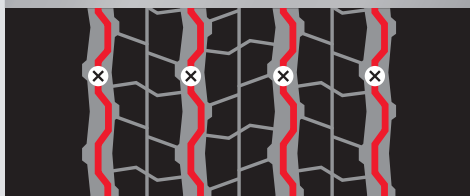
Size	Depth (mm)	Width (mm)
17.5"		
205/75 R17.5	4.0	8.0 - 9.0
235/75 R17.5	4.0	8.0 - 9.0
19.5"		
265/70 R19.5	4.0	8.0 - 9.0
285/70 R19.5	4.0	8.0 - 9.0
22.5"		
295/80 R22.5	4.0	8.0 - 9.0
275/70 R22.5	4.0	8.0 - 9.0
10 R22.5 (275/80 R22.5)	4.0	8.0 - 9.0
11 R22.5	4.0	8.0 - 9.0
12 R22.5	4.0	8.0 - 9.0

FR 3



Size	Depth (mm)	Width (mm)
17.5"		
215/75 R17.5	3.0	8.0 - 10.0
225/75 R17.5	3.0	8.0 - 10.0
19.5"		
245/70 R19.5	3.0	8.0 - 10.0

TR 1

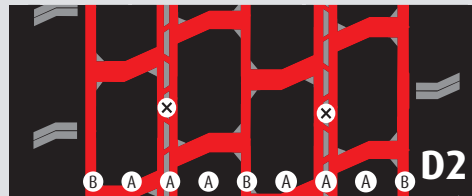


Size	Depth (mm)	Width (mm)
19.5"		
265/70 R19.5	3.0	8.0 - 10.0

DR 1

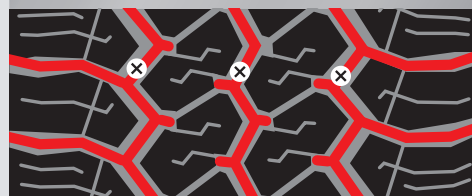


Pattern variant



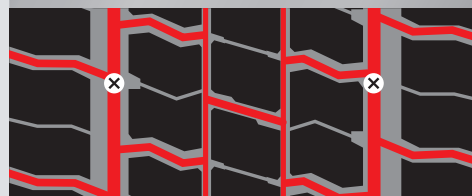
Size	Depth (mm)	Width (mm)
19.5"		
245/70 R19.5 ⁰²	3.0	A: 5.0, B: 10.0
265/70 R19.5 ⁰²	3.0	A: 5.0, B: 10.0
285/70 R19.5 ⁰¹	4.0	8.0 - 10.0
20"		
10.00 R20 ⁰¹	4.0	8.0 - 10.0
11.00 R20 ⁰¹	4.0	8.0 - 10.0
22.5"		
275/70 R22.5 ⁰¹	4.0	8.0 - 10.0
11 R22.5 ⁰¹	4.0	8.0 - 10.0

DR 2



Size	Depth (mm)	Width (mm)
17.5"		
205/75 R17.5	3.0	7.0 - 8.0
235/75 R17.5	3.0	7.0 - 8.0

DR 3



Size	Depth (mm)	Width (mm)
17.5"		
215/75 R17.5	3.0	8.0 - 10.0
225/75 R17.5	3.0	8.0 - 10.0

FM 1



Size	Depth (mm)	Width (mm)
20"		
12.00 R20	4.0	8 - 10
22.5"		
12 R22.5	4.0	8 - 10
13 R22.5	4.0	8 - 10

DM 1



Size	Depth (mm)	Width (mm)
20"		
12.00 R20	4.0	11 - 12
22.5"		
12 R22.5	4.0	11 - 12
13 R22.5	4.0	11 - 12

FM 2



Size	Depth (mm)	Width (mm)
22.5"		
315/80 R22.5	3.0	10.0

DM 4



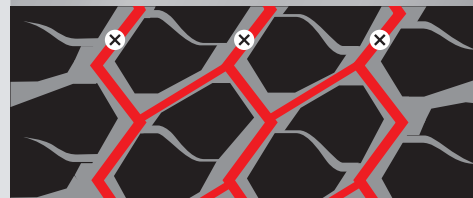
Size	Depth (mm)	Width (mm)
22.5"		
315/80 R22.5	3.0	7 - 8
13 R22.5 (available 01/2019)	3.0	7 - 8

FM 4



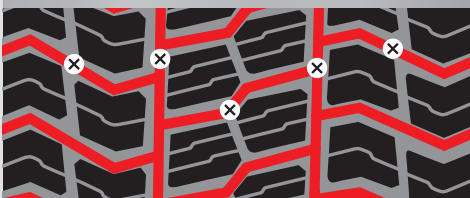
Size	Depth (mm)	Width (mm)
22.5"		
315/80 R22.5	3.0	7 - 8
13 R22.5 (available 01/2019)	3.0	7 - 8

TM 1



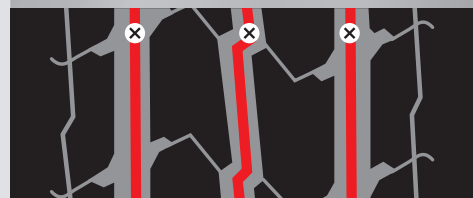
Size	Depth (mm)	Width (mm)
22.5"		
385/65 R22.5	4.0	10.0 - 12.0

DW 1



Size	Depth (mm)	Width (mm)
22.5"		
295/80 R22.5	3.0	8.0 - 10.0

FU 1



Size	Depth (mm)	Width (mm)
22.5"		
295/80 R22.5	4.0	9.0 - 10.0
275/70 R22.5 *	4.0	9.0 - 10.0

Technical specifications and load capacities

Size	Operational parameters										EU Tyre label		Rim		Tyre size (mm)					Load per axle (kg) at tyre pressure (kPa)																
	Tread pattern	L1/S1	Speed index and ref. speed (km/h)	PR	TT/TL	M+S mark	3PMFS	Fuel efficiency	Wet grip	Ext. rolling noise	Noise grade	Rim width	Axial distance	Maximum operating size		New tyre	Static radius ± 1.5%	Effective rolling circumference ± 2%	LI	Single/Dual	450	500	550	600	650	700	750	800	850	900						
														↑	↓																±1%	±1%				
17.5"																																				
205/75 R 17.5	FR2	124/122 M	M 130	14	TL		E	C	73	2	5.25 6.00	222 230	205 213	765	197 205	753	353	2.297	124 122	S D	2.245 4.210	2.445 4.585	2.640 4.945	2.830 5.300	3.015 5.655	3.700 6.000										
	DR2	124/122 M	M 130	14	TL	M+S	x	E	C	71	1																									
215/75 R 17.5	FR3	126/124 M	M 130	12	TL		E	C	73	2	6.00 6.75	239 246	220 228	779	212 219	767	359	2.339	135 126 133 124	S D D D	2.385 4.490	2.850 4.885	3.075 5.275	3.295 5.655	3.515 6.030	3.730 6.400	3.940 7.450	4.150 7.845	4.360 8.240							
	DR3	126/124 M	M 130	12	TL	M+S		E	C	73	2																									
	TH2	135/133 J	J 100	16	TL			C	C	73	2																									
	FHR4	126/124 M	M 130	12	TL	M+S		D	C	71	2																									
	DHR4	126/124 M	M 130	12	TL	M+S	x	D	C	74	2																									
	THR4	135/133 K	K 110	16	TL	M+S		C	B	69	1																									
225/75 R 17.5	FR3	129/127 M	M 130	12	TL		E	C	73	2	6.00 6.75	246 254	228 235	797	219 226	783	366	2.388	129 127	S D	2.455 4.650	2.675 5.060	2.885 5.460	3.095 5.855	3.295 6.240	3.500 6.620	3.700 7.000									
	DR3	129/127 M	M 130	12	TL	M+S		E	C	75	2																									
235/75 R 17.5	FR2	132/130 L (130/128 M)	L 120 (M 130)	12	TL		E	C	73	2	6.75 7.50	262 271	242 251	811	233 241	797	372	2.431	144 143 132 130 144 141 130 128	S S S D D D D	2.520 2.525	3.405 2.745	3.675 2.960	3.940 3.175	4.200 3.385	4.455 3.590	4.835 3.795	5.095 4.955	5.345 5.205	5.600 5.450						
	DR2	132/130 L (130/128 M)	L 120 (M 130)	12	TL	M+S	x	E	C	71	1																									
	TH2	143/141 J	J 100	16	TL			C	C	73	2																									
	THR4	143/141 K (144/144 F)	K 110 (F 80)	16	TL	M+S		C	B	69	1																									
245/70 R 17.5	FHR4	136/134 M	M 130	16	TL		D	B	70	1	6.75 7.50	270 279	250 258	803	240 248	789	364	2.406	146 143 136 146 141 134	S S S D D D		3.405 2.930	3.675 3.160	3.940 3.390	4.200 3.610	4.455 3.835	4.965 4.710	5.225 4.955	5.485 5.205	5.600 5.450						
	DHR4	136/134 M	M 130	16	TL	M+S		E	C	76	3																									
	TH2	143/141 J	J 100	16	TL			C	C	73	2																									
	THR4	143/141 L (146/146 F)	L 120 (F 80)	16	TL	M+S		C	B	69	1																									
205/65 R 17.5	THR4	127/125 J (127/127 F)	J 100 (F 80)	14	TL	M+S		D	C	69	1	6.00 6.75	231 239	213 221	721	204 213	711	332	2.155	127 127 125	S D D	2.185 4.370 4.120	2.360 4.720	2.530 5.060	2.695 5.395	2.860 5.725	3.020 6.045	3.185 6.685	3.340 6.685	3.500 7.000	6.600					
19.5"																																				
245/70 R 19.5	THR4	141/140 J	J 100	16	TL	M+S		C	C	70	1	6.75 7.50	270 279	250 258	853	240 248	839	389	2.559	141 136 140 134	S D D D	3.095 2.690 6.010 5.095	3.365 2.930 6.540 5.545	3.635 3.160 7.055 5.985	3.895 3.390 7.565 6.415	4.155 3.610 8.065 6.840	4.405 3.835 9.045 7.260	4.655 4.050 9.525 7.670	4.905 4.265 10.000 8.075	5.150 4.480 10.000 8.480						
	FR3	136/134 M	M 130	16	TL		D	C	73	2																										
	DR1	136/134 M	M 130	16	TL	M+S		D	C	75	2																									
265/70 R 19.5	FR2	136/134 M (140/138 L)	M 130 (L 120)	14	TL		D	C	73	2	6.75 7.50	286 295	264 272	881	254 262	867	401	2.644	143 140 136	S S S	3.155 2.975	3.560 3.435	3.845 3.705	4.120 3.970	4.395 4.235	4.665 4.495	4.920 4.750	5.190 5.000	5.450							
	DR1	140/138 M	M 130	16	TL	M+S		D	C	75	2																									
	TR1	143/141 J	J 100	18	TL	M+S		** ** *	** ** *	** ** *	** ** *																									
285/70 R 19.5	THR4	150/147 J	J 100	16	TL	M+S		C	C	70	1	7.50 8.25	311 318	287 294	911	276 283	895	413	2.730	150 145 147	S D D	3.485 6.550	4.185 7.125	4.515 7.690	4.840 8.245	5.160 8.790	5.475 9.330	5.790 9.860	6.095 10.380	6.400 10.900	6.700					
	FR2	144/143 M	M 130	16	TL		D	C	73	2																										
	DR1	145/143 M	M 130	16	TL	M+S	x	D	C	75	2																									
445/45 R 19.5	THR4	160/ - J	J 100	22	TL	M+S		B	C	72	2	14.00 15.00	453 464	911	436 446	895	415	2.712	160	S	5.165	5.620	6.065	6.505	6.935	7.360	7.775	8.190	8.595	9.000						
22.5"																																				
295/80 R 22.5	FH1	152/148 M	M 130	16	TL		C	C	70	1	8.25 9.00	326 335	302 310	1.062	290 298	1.044	487	3.184	154 152 148 149 148	S D D D D	4.505 4.265 7.575 7.815 7.575	4.905 4.640 8.240 8.500 8.240	5.290 5.010 8.890 9.175 8.890	5.675 5.370 9.535 9.835 9.535	6.050 5.725 10.165 10.485 10.165	6.420 6.075 10.785 11.125 10.785	6.785 6.420 11.395 11.760 11.395	7.140 6.760 12.000 12.380 12.000	7.500 7.100 12.600 13.000 12.600							
	FR2	152/148 M	M 130	16	TL		D	C	73	2																										
	DH1	152/148 M	M 130	16	TL	M+S	x	E	C	74	2																									
	FU1	152/148 J	J 100	16	TL	M+S	x	E	C	76	3																									
	DW1	152/148 M	M 130	16	TL	M+S	x	E	C	76	3																									
	FHR4	154/149 M	M 130	16	TL	M+S		C	B	70	1																									
	DHR4	152/148 M	M 130	16	TL	M+S	x	D	C	74	2																									
315/80 R 22.5	FHR4	156/150 L (154/150 M)	L 120 (M 130)	20	TL	M+S	x	** ** *	** ** *	** ** *	9.00 9.75	351 360	318 326	1.096	312 320	1.076	500	3.282	156 154 150	S D D	4.590 4.505 8.055	4.995 4.905 8.760	5.390 5.290 9.455	5.780 5.675 10.140	6.165 6.050 10.810	6.540 6.420 11.470	6.910 6.785 12.420	7.280 7.140 12.765	7.640 7.500 13.400	8.000						
	DHR4	156/150 L (154/150 M)	L 120 (M 130)	20	TL	M+S	x	D	C	75	2																									

* in preparation ** values in preparation

www.matador.tires/transport

Matador. A brand of Continental.

Size	Operational parameters										EU Tyre label		Rim		Tyre size (mm)						Load per axle (kg) at tyre pressure (kPa)																
	Tread pattern	L1/S1	Speed index and ref. speed (km/h)	PR	TT/TL	M+S mark	3PMFS	Fuel efficiency	Wet grip	Ext. rolling noise	Noise grade	Rim width	Axial distance	Maximum operating size		New tyre		Static radius ±1.5%	Effective rolling circumference ±2%	LI	Single/Dual																
														↕	↔	↕	↔																				450
22.5"																																					
315/80 R 22.5	FM2	156/150 K	K 110	18	TL	M+S		D	C	70	1																										
	FM4	156/150 K	K 110	20	TL	M+S	x	**	**	**	**																										
	DM4	156/150 K	K 110	20	TL	M+S	x	D	B	75	2																										
275/70 R 22.5	FR2	148/145 L	L 120	16	TL			D	C	73	2	7.50 8.25	303 311	280 287	974	269 276	958	445	2.922	151 148 148 145	S D D D		4.150 3.790 7.575 6.975	4.510 4.120 8.240 7.590	4.870 4.445 8.895 8.190	5.220 4.765 9.535 8.780	5.565 5.080 10.165 9.360	5.900 5.395 11.400 9.930	6.240 5.700 12.000 10.495	6.570 6.000 12.600 11.050	6.900 6.300 13.200 11.600						
	DR1	148/145 L	L 120	16	TL	M+S	x	E	C	75	2																										
	FU1	148/145 L (151/148 E)	J 100 (E 70)	16	TL	M+S	x	D	C	71	2																										
315/70 R 22.5	FHR4	156/150 L (154/150 M)	L 120 (M 130)	20	TL	M+S	x	**	**	**	**	9.00	351	318	1.032	312	1.014	468	3.093	156	S		4.590	4.995	5.390	5.780	6.465	6.540	6.910	7.280	7.640	8.000					
	DHR4	154/150 L	L 120	20	TL	M+S	x	D	C	74	3									150	D		7.695	8.370	9.035	9.685	10.325	10.955	11.580	12.195	12.800	13.400					
385/65 R 22.5	THR4	160/-K (158/-L)	K 110 (L 120)	20	TL	M+S		B	B	70	2	11.75 12.25		405 410	1.092	389 394	1.072	495	3.248	160 158	S S		5.165 5.110	5.620 5.555	6.065 6.000	6.505 6.430	6.935 6.855	7.360 7.275	7.775 7.690	8.190 8.095	8.595 8.500	9.000					
	FH2	158 L (160 J)	L 120 (J 100)	18	TL			C	C	73	2																										
	TH1	160 K	K 110	18	TL	M+S		C	C	76	3																										
	FHR4	160 K (158 L)	K 110	20	TL	M+S		C	B	71	2																										
295/60 R 22.5	FHR4	150/147 L	L 120	18	TL	M+S		C	C	70	1	9.00 9.75	339 328	304 312	940	292 300	926	435	2.806	150 147	S D		3.845 7.060	4.185 4.685	4.515 8.290	4.840 8.890	5.160 9.480	5.475 10.055	5.790 10.630	6.095 11.190	6.400 11.750	6.700 12.300					
	DHR4	150/147 L	L 120	18	TL	M+S	x	E	C	76	3																										
315/60 R 22.5	FHR4	152/148 L	L 120	20	TL	M+S		C	C	71	2	9.00 9.75	344 352	318 326	966	306 313	950	445	2.879	152 148	S D		4.075 7.235	4.435 7.870	4.785 8.495	5.130 9.105	5.470 9.710	5.805 10.305	6.135 10.885	6.460 11.465	6.780 12.035	7.100 12.600					
	DHR4	152/148 L	L 120	20	TL	M+S	x	D	C	76	2																										
385/55 R 22.5	THR4	160/-K (158/-L)	K 110 (L 120)	20	TL	M+S		C	B	71	2	11.75 12.25		396 401	1.012	381 386	996	464	3.018	160 158	S S		5.165 5.110	5.620 5.555	6.065 6.000	6.505 6.430	6.935 6.855	7.360 7.275	7.775 7.690	8.190 8.095	8.595 8.500	9.000					
	FHR4	160 K (158 L)	K 110	20	TL	M+S		C	B	71	2																										
10 R 22.5	FR2	144/142 L	L 120	14	TL			D	C	73	2	6.75 7.50	277 286	253 262	1.033	246 254	1.020	476	3.110	144 142	S D					4.240 8.020	4.520 8.555	4.795 9.075	5.065 9.590	5.335 10.100	5.600 10.600						
11 R 22.5	FH1	148/145 L	L 120	16	TL			D	C	70	1	7.50 8.25	306 314	283 290	1.070	272 279	1.050	489	3.203	148 145	S D		3.785 6.970	4.120 7.585	4.445 8.185	4.765 8.775	5.080 9.355	5.390 9.930	5.695 10.490	6.000 11.050	6.300 11.600						
	DH1	148/145 L	L 120	16	TL	M+S	x	E	C	74	2																										
	FR2	148/145 L	L 120	16	TL			D	C	73	2																										
	DR1	148/145 L	L 120	16	TL	M+S	x	E	C	75	2																										
12 R 22.5	DH1	152/148 L	L 120	16	TL	M+S	x	E	C	74	2	8.25 9.00	329 338	304 312	1.104	292 300	1.084	504	3.306	152 150 148	S S D		4.265 4.225 7.575	4.640 4.600 8.240	5.010 4.960 8.890	5.370 5.320 9.535	5.725 5.670 10.165	6.075 6.020 11.395	6.420 6.360 12.000	6.760 6.700 12.600	7.100 7.500 13.200						
	FR2	152/148 L (150/148 M)	L 120 (M 130)	16	TL			D	C	71	1																										
	FM1	152/148 L	K 110	16	TL			D	C	70	1																										
	DM1	152/148 L	K 110	16	TL	M+S		D	C	74	2																										
13 R 22.5	FM1	154/150 K (156/150 G)	K 110 (G 90)	18	TL	M+S		D	C	70	1	9.00 9.75	352 360	319 326	1.141	313 320	1.124	521	3.428	156 154 150	S S D		4.590 4.505 8.055	4.995 4.905 8.760	5.390 5.290 9.455	5.780 5.675 10.140	6.165 6.050 10.810	6.540 6.420 11.470	6.910 6.785 12.120	7.280 7.140 12.765	7.640 7.500 13.400	8.000					
	FM4°	156/150 K	K 110	16	TL	M+S	x	**	**	**	**																										
	DM1	154/150 K (156/150 G)	K 110 (G 90)	18	TL	M+S	x	E	C	76	3																										
	DM4°	156/150 K	K 110	18	TL	M+S	x	**	**	**	**																										
20"																																					
10 R 20	FR1	146/143 K	K 110	16	TT			D	C	73	2	7.50	316	283	1.068	275	1.052	485	3.205	146 143	S D		8.055 8.055	4.115 7.480	4.445 8.075	4.765 8.655	5.080 9.230	5.390 9.795	5.695 10.350	6.000 10.900							
	DR1	146/143 K	K 110	16	TT	M+S		E	C	75	2																										
11 R 20	FR1	150/146 K	K 110	16	TT			D	C	73	2	8.00	330	295	1.099	286	1.082	498	3.295	150 146	S D		8.055 8.055	4.380 7.845	4.725 8.470	5.070 9.080	5.405 9.680	5.735 10.270	6.060 10.855	6.380 11.430	6.700 12.000						
	DR1	150/146 K	K 110	16	TT	M+S	x	E	C	75	2																										
12 R 20	FR1	154/150 K	K 110	18	TT			D	C	73	2	8.50	351	322	1.140	313	1.122	515	3.420	154 150 149	S D D		8.055 8.055 8.055	4.905 8.760 8,5	5.290 9.455 9,175	5.675 10.140 9.835	6.050 10.810 10.485	6.420 11.470 11.125	6.785 12.120 11.76	7.140 12.765 12.38	7.500 13.400 13.000						
	FM1	154/150 K	K 110	18	TT			D	C	70	1																										
	DM1	154/149 K	K 110	18	TT	M+S		D	C	76	3																										

Truck Tyres

From Matador

Continental Matador Rubber, s.r.o.

Terézie Vansovej 1054

020 01 Púchov

Slovak Republic

www.matador.tires/transport

en 2018.08

Your tyre specialist:

Matador. A brand of Continental.

 **Matador**[®]