



Tel: +86-535-8242696
en.linglong.cn
LLIE_sales@linglong.cn



TBR RADIAL TRUCK TIRE



LEAO TIRE

DIRECTORY

SIZE SELECTION GUIDE (03)

LONG HAUL (11)

REGIONAL (15)

ON&OFF ROAD (27)

LIGHT TRUCK (33)

WINTER (42)

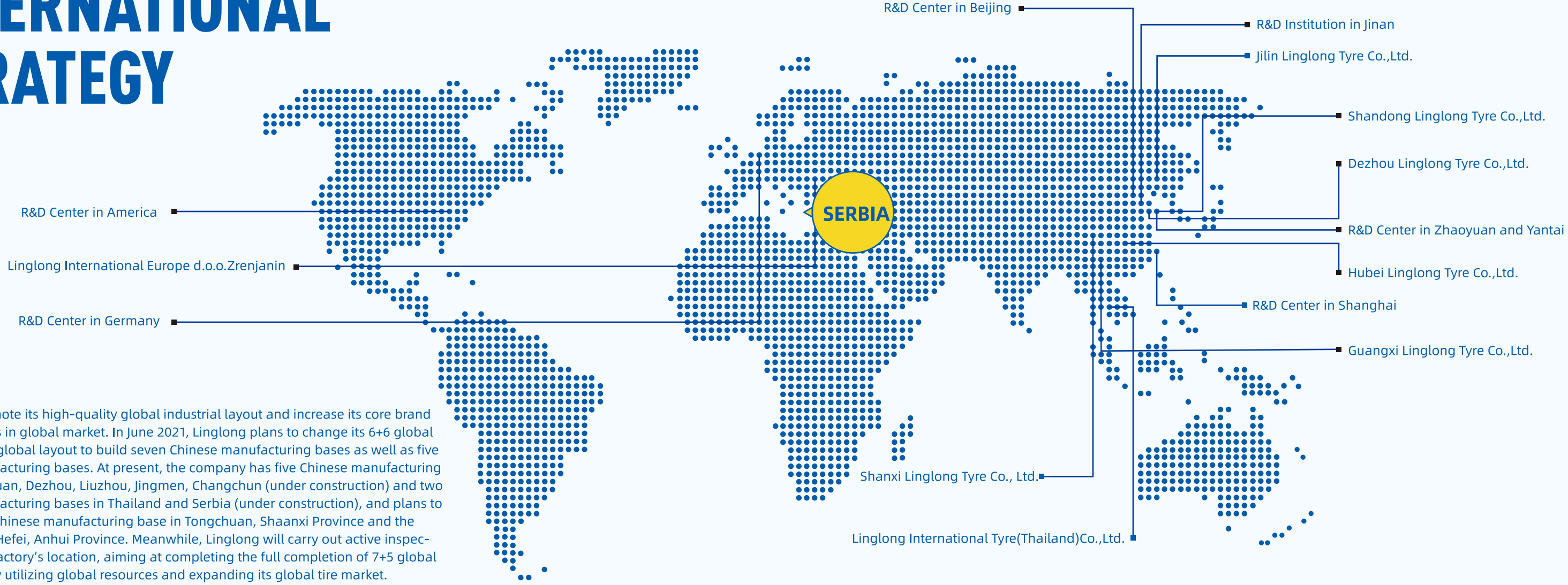
COACH&URBAN (45)

A large blue semi-truck is shown from a side-rear perspective, driving on a paved road that curves through a hilly, green landscape. The truck is moving towards the right, and the background shows rolling hills under a clear sky. The text 'THE WORLD AT YOUR REACH' is overlaid in white on the right side of the image.

**THE WORLD
AT YOUR REACH**

INTERNATIONAL STRATEGY

In order to promote its high-quality global industrial layout and increase its core brand competitiveness in global market. In June 2021, Linglong plans to change its 6+6 global layout into 7+5 global layout to build seven Chinese manufacturing bases as well as five overseas manufacturing bases. At present, the company has five Chinese manufacturing bases in Zhaoyuan, Dezhou, Liuzhou, Jingmen, Changchun (under construction) and two overseas manufacturing bases in Thailand and Serbia (under construction), and plans to build the sixth Chinese manufacturing base in Tongchuan, Shaanxi Province and the seventh one in Hefei, Anhui Province. Meanwhile, Linglong will carry out active inspection of its new factory's location, aiming at completing the full completion of 7+5 global layout, and fully utilizing global resources and expanding its global tire market.





Pattern	Size	Ply Rating	Load Index	Speed Symbols	M+S	3PMSF	EU Labelling			
							RR	WG	Noise	DB
ETS100	295/60R22.5	16	150/147	L	●	●	D	C	B	73
ETS100	295/80R22.5	16	152/148	M	●	●	D	C	B	73
ETS100	295/80R22.5	18	154/149	M	●	●	D	C	B	73
ETS100	315/60R22.5	16	152/148	L	●	●	D	C	B	73
ETS100	315/60R22.6	18	154/150(152/148)	L(M)	●	●	D	C	B	73
ETS100	315/70R22.5	16	154/150(152/148)	L(M)	●	●	D	C	B	73
ETS100	315/70R22.5	18	156/150(154/150)	L(M)	●	●	D	C	B	73
ETS100	315/80R22.5	18	154/150	M	●	●	D	C	B	73
ETS100	315/80R22.5	20	156/150(154/150)	L(M)	●	●	D	C	B	73
ETS100	315/80R22.5	22	158/150(154/150)	L(M)	●	●	D	C	B	73
ETS100	385/55R22.5	18	158	L	●	●	D	C	B	73
ETS100	385/55R22.5	20	160(158)	K(L)	●	●	D	C	B	73
ETD100	295/80R22.5	16	152/148	M	●	●	C	C	B	75
ETD100	295/60R22.5	16	150/147	L	●	●	D	C	B	75
ETD100	315/80R22.5	18	154/150	M	●	●	C	C	B	75
ETD100	315/80R22.5	20	156/150(154/150)	L(M)	●	●	C	C	B	75
ETD100	315/70R22.5	16	154/150(152/148)	L(M)	●	●	C	C	B	75
ETD100	315/70R22.5	18	156/150(154/150)	L(M)	●	●	C	C	B	75
ETD100	315/60R22.5	16	152/148	L	●	●	C	C	B	75
ETT100	445/45R19.5	18	156	J	●	●	C	C	B	73
ETT100	445/45R19.5	20	160	J	●	●	C	C	B	73
ETT100	435/50R19.5	18	156	J	●	●	C	C	B	73
ETT100	435/50R19.5	20	160	J	●	●	C	C	B	73
ETT100	425/65R22.5	20	165	K	●	●	C	C	B	73
ETT100	385/65R22.5	20	160(158)	K(L)	●	●	C	C	B	73
ETT100	385/65R22.5	24	164(158)	K(L)	●	●	C	C	B	73
ETT100	385/55R22.5	18	158	L	●	●	C	C	B	73
ETT100	385/55R22.5	20	160(158)	K(L)	●	●	C	C	B	73
ETT100	385/55R19.5	18	156	J	●	●	C	C	B	73
T820	445/45R19.5	18	156	J	●	●	D	C	B	73
T820	445/45R19.5	20	160	J	●	●	D	C	B	73
T820	435/50R19.5	18	156	J	●	●	D	C	B	73
T820	435/50R19.5	20	160	J	●	●	D	C	B	73
T820	385/55R19.5	18	156	J	●	●	D	C	B	73
T830	385/55R22.5	20	160(158)	J(L)	●	●	D	B	B	73
F820	205/75R17.5	14	124/122	M	●	●	D	C	B	72
F820	245/70R19.5	14	133/131	M	●	●	D	C	B	71
F820	245/70R19.5	16	136/134	M	●	●	D	C	B	71

Pattern	Size	Ply Rating	Load Index	Speed Symbols	M+S	3PMSF	EU labelling			
							RR	WG	Noise	DB
LDL831	245/70R17.5	14	134/132	M	●	●	E	C	B	73
LDL831	245/70R17.5	16	136/134	M	●	●	E	C	B	73
LDL831	245/70R17.5	18	143/141	J	●	●	E	C	B	73
LDL831	235/75R17.5	14	132/130	M	●	●	E	C	B	73
LDL831	235/75R17.5	16	141/140	J	●	●	E	C	B	73
LDL831	235/75R17.5	18	143/141	J	●	●	E	C	B	73
LDL831	215/75R17.5	14	126/124	M	●	●	E	C	B	73
LDL831	215/75R17.5	16	135/133	J	●	●	E	C	B	73
LFL866	205/65R17.5	16	"129/127 (132/132)"	J(G)	●	●	D	B	B	72
LFL866	215/75R17.5	14	126/124	M	●	●	D	B	B	72
LFL866	215/75R17.5	16	135/133	J	●	●	D	B	B	72
LFL866	235/75R17.5	14	132/130	M	●	●	D	B	B	72
LFL866	235/75R17.5	16	141/140	J	●	●	D	B	B	72
LFL866	235/75R17.5	18	143/141	J	●	●	D	B	B	72
LFL866	245/70R17.5	14	134/132	M	●	●	D	B	B	72
LFL866	245/70R17.5	16	136/134	M	●	●	D	B	B	72
LFL866	245/70R17.5	18	143/141	J	●	●	D	B	B	72
LFL866	245/70R17.5	16	136/134	M	●	●	D	B	B	72
LFL866	245/70R17.5	18	143/141	J	●	●	D	B	B	72
KLS200	245/70R19.5	14	133/131	M	●	●	D	B	B	73
KLS200	215/75R17.5	14	126/124	M	●	●	D	B	B	73
KLS200	215/75R17.5	16	135/133	J	●	●	D	B	B	73
KLS200	225/75R17.5	12	126/125	M	●	●	D	B	B	73
KLS200	225/75R17.5	14	129/127	M	●	●	D	B	B	73
KLS200	235/75R17.5	14	132/130	M	●	●	D	B	B	73
KLS200	235/75R17.5	16	141/140	J	●	●	D	B	B	73
KLS200	235/75R17.5	18	143/141	J	●	●	D	B	B	73
KLS200	245/70R17.5	14	134/132	M	●	●	D	B	B	73
KLS200	245/70R17.5	16	136/134	M	●	●	D	B	B	73
KLS200	245/70R17.5	18	143/141	J	●	●	D	B	B	73
KLS200	245/70R19.5	12	129/127	M	●	●	D	B	B	73
KLS200	245/70R19.5	14	133/131	M	●	●	D	B	B	73
KLS200	245/70R19.5	16	136/134	M	●	●	D	B	B	73
LLA78	235/75R17.5	14	132/130	M	●	●	E	B	B	73
LLA78	235/75R17.5	16	141/140	J	●	●	E	B	B	73
LLA78	235/75R17.5	18	143/141	J	●	●	E	B	B	73
LLF26	9.5R17.5	14	129/127	M	●	●	E	C	B	71
LLF26	9.5R17.5	18	143/141	M/J	●	●	E	C	B	71
LLF86	215/75R17.5	14	126/124	L/M	●	●	E	B	B	72
LLF86	215/75R17.5	16	135/133	J/L	●	●	E	B	B	72



Pattern	Size	Ply Rating	Load Index	Speed Symbols	M+S	3PMSF	EU Labelling			
							RR	WG	Noise	DB
LFL827	385/65R22.5	20	160	J	●		D	C	B	73
LFL827	385/65R22.5	20	160(158)	K(L)	●		D	C	B	73
LFL827	385/65R22.5	24	164	J	●		D	C	B	73
LLF56+	10R22.5	14	144/142	L	●		D	C	B	72
F805	275/70R22.5	16	145/145	M			D	C	B	73
F820	255/70R22.5	14	136/133	M	●	●	D	C	B	72
F820	255/70R22.5	16	140/137	M	●	●	D	C	B	72
F820	265/70R19.5	14	136/134	M	●	●	D	C	B	72
F820	265/70R19.5	16	140/138	M	●	●	D	C	B	72
F820	265/70R19.5	18	143/141	J	●	●	D	C	B	72
F820	275/70R22.5	16	148/145	M	●	●	D	C	B	72
F820	275/70R22.5	18	150/148	M	●	●	D	C	B	72
F820	285/70R19.5	16	144/142	M	●	●	D	C	B	73
F820	285/70R19.5	18	146/144	M	●	●	D	C	B	73
F820	285/70R19.5	18	150/147	J	●	●	D	C	B	73
F860	295/80R22.5	16	152/148	M	●		D	A	B	73
F860	295/80R22.5	18	154/149	M	●		D	A	B	73
LFL185	295/80R22.5	16	152/148	M			D	B	B	73
LFL185	295/80R22.5	18	154/149	L			D	B	B	73
LTL812	315/80R22.5	18	154/150	M	●		D	B	A	70
LTL812	315/80R22.5	20	156/150	M	●		D	B	A	70
LTL812	315/70R22.5	18	156/150(154/150)	L(M)	●		D	B	A	70
LTL812	295/80R22.5	16	152/148	M	●		D	B	A	70
LTL812	295/80R22.5	18	154/149	M	●		D	B	A	70
KLS200	265/70R19.5	14	136/134	M	●	●	D	B	B	73
KLS200	265/70R19.5	16	140/138	M	●	●	D	B	B	73
KLS200	265/70R19.5	18	143/141	J	●	●	D	B	B	73
KLS200	285/70R19.5	18	146/144	M	●	●	D	B	B	73
KLS200	285/70R19.5	18	150/148	J	●	●	D	B	B	73
KLS200	305/70R19.5	16	144/141	M	●	●	D	B	B	73
KLS200	305/70R19.5	18	146/143	M	●	●	D	B	B	73
KLS200	305/70R19.5	18	148/145	M	●	●	D	B	B	73
KTS300	295/60R22.5	16	150/147	L	●	●	C	C	B	73
KTS300	295/80R22.5	18	154/149	M	●	●	C	C	B	73
KTS300	295/80R22.5	16	152/148	M	●	●	C	C	B	73
KTS300	315/60R22.5	16	152/148	L	●	●	C	C	B	73
KTS300	315/60R22.5	18	154/150(152/148)	L(M)	●	●	C	C	B	73
KTS300	315/70R22.5	16	154/150(152/148)	L(M)	●	●	C	C	B	73

Pattern	Size	Ply Rating	Load Index	Speed Symbols	M+S	3PMSF	EU labelling			
							RR	WG	Noise	DB
KTS300	315/70R22.5	18	156/150(154/150)	L(M)	●	●	C	C	B	73
KTS300	315/80R22.5	20	156/150(154/150)	L(M)	●	●	C	C	B	73
KTS300	315/80R22.5	22	158/150(154/150)	L(M)	●	●	C	C	B	73
KTS300	385/55R22.5	18	158	L	●	●	C	C	B	73
KTS300	385/55R22.5	20	160(158)	K(L)	●	●	C	C	B	73
KTS300	385/65R22.5	20	160(158)	K(L)	●	●	C	C	B	73
KTS300	385/65R22.5	24	164(158)	K(L)	●	●	C	C	B	73
LLF01	275/80R22.5	16	149/146	M			D	B	B	73
LLF02	315/80R22.5	18	154/150	M	●		D	B	B	73
LLF02	315/80R22.5	20	156/150	L	●		D	B	B	73
LLF02	295/80R22.5	16	152/148	M	●		D	B	B	73
LLF02	295/80R22.5	18	154/149	M	●		D	B	B	73
D905	295/80R22.5	16	152/148	M	●	●	D	C	B	73
D905	285/70R19.5	16	140/137	M	●	●	E	C	B	73
D905	285/70R19.5	18	146/144	M	●	●	E	C	B	73
D905	285/70R19.5	18	150/148	J	●	●	E	C	B	73
D905	275/70R22.5	16	148/145	M	●	●	E	C	B	73
LDL831	315/80R22.5	18	154/150	L	●	●	E	C	B	73
LDL831	315/80R22.5	20	156/150	L	●	●	E	C	B	73
LDL831	295/80R22.5	16	152/148	L	●	●	E	C	B	73
LDL831	285/70R19.5	16	140/137	M	●	●	D	C	B	73
LDL831	285/70R19.5	18	146/144	M	●	●	D	C	B	73
LDL831	285/70R19.5	18	150/148	J	●	●	D	C	B	73
KLD200	215/75R17.5	14	126/124	M	●	●	D	C	B	73
KLD200	225/75R17.5	12	126/125	M	●	●	D	C	B	73
KLD200	225/75R17.5	14	129/127	M	●	●	D	C	B	73
KLD200	235/75R17.5	14	132/130	M	●	●	D	C	B	73
KLD200	245/70R17.5	14	134/132	M	●	●	D	C	B	73
KLD200	245/70R17.5	16	136/134	M	●	●	D	C	B	73
KLD200	245/70R19.5	12	129/127	M	●	●	D	C	B	73
KLD200	245/70R19.5	14	133/131	M	●	●	D	C	B	73
KLD200	245/70R19.5	16	136/134	M	●	●	D	C	B	73
KLD200	265/70R19.5	14	136/134	M	●	●	D	C	B	73
KLD200	265/70R19.5	16	140/138	M	●	●	D	C	B	73
KLD200	285/70R19.5	18	146/144	M	●	●	D	C	B	73
KLD200	305/70R19.5	16	144/141	M	●	●	D	C	B	73
KLD200	305/70R19.5	18	146/143	M	●	●	D	C	B	73
KLD200	305/70R19.5	18	148/145	M	●	●	D	C	B	73

Pattern	Size	Ply Rating	Load Index	Speed Symbols	M+S	3PMSF	EU Labelling			
							RR	WG	Noise	DB
KTD300	295/60R22.5	16	150/147	L	●	●	E	B	B	75
KTD300	295/80R22.5	16	152/148	M	●	●	E	B	B	75
KTD300	315/60R22.5	16	152/148	L	●	●	E	B	B	75
KTD300	315/70R22.5	16	154/150(152/148)	L(M)	●	●	E	B	B	75
KTD300	315/70R22.5	18	156/150(154/150)	L(M)	●	●	E	B	B	75
KTD300	315/80R22.5	18	154/150	M	●	●	E	B	B	75
KTD300	315/80R22.5	20	156/150(154/150)	L(M)	●	●	E	B	B	75
LTL863	385/55R22.5	18	158	L	●	●	D	B	B	73
LTL863	385/55R22.5	20	160(158)	J(L)	●	●	D	B	B	73
LTL863	385/65R22.5	20	160(158)	J(L)	●	●	D	B	B	73
LTL863	385/65R22.5	24	164	J	●	●	D	B	B	73
LTL863	445/65R22.5	20	169	J	●	●	D	B	B	73
KLT200	205/65R17.5	16	"129/127(132/132)"	J(G)	●	●	D	B	B	72
KLT200	215/75R17.5	16	135/133	J	●	●	D	B	B	72
KLT200	235/75R17.5	16	141/140	J	●	●	D	B	B	72
KLT200	235/75R17.5	18	143/141	J	●	●	D	B	B	72
KLT200	245/70R17.5	18	143/141	J	●	●	D	B	B	72
LLA18	385/65R22.5	18	158	K	●	●	D	C	B	73
LLA18	385/65R22.5	20	160	J	●	●	D	C	B	73
LLA18	385/65R22.5	24	164	J	●	●	D	C	B	73
LLA28	425/65R22.5	20	165	J	●	●	D	B	B	73
T820	305/70R19.5	18	148/145	M	●	●	D	C	B	73
KMA400	445/65R22.5	20	169	J/K	●	●	D	B	B	73
KMA400	425/65R22.5	20	165	K	●	●	D	B	B	73
KMA400	315/80R22.5	18	154/150	K	●	●	D	B	B	73
KMA400	315/80R22.5	20	156/150	K	●	●	D	B	B	73
KMA400	315/80R22.5	22	158/150	K	●	●	D	B	B	73
KMA400	295/80R22.5	16	152/148	K	●	●	D	B	B	73
KMA400	13R22.5	18	156/150	K	●	●	D	B	B	73
KMA400	13R22.5	20	158/156	K	●	●	D	B	B	73
KXA400	425/65R22.5	20	165	K	●	●	D	C	B	73
KXA400	385/65R22.5	18	158	L	●	●	D	C	B	73
KXA400	385/65R22.5	20	160(158)	K(L)	●	●	D	C	B	73
KXA400	385/65R22.5	24	164	J	●	●	D	C	B	73
LLA01	13R22.5	18	156/150	K	●	●	D	A	B	72
LLA08	315/80R22.5	18	154/150	M	●	●	D	B	B	73
LLA08	315/80R22.5	20	156/150	L	●	●	D	B	B	73
LLA08	12R22.5	16	152/148	K	●	●	D	B	B	73

Pattern	Size	Ply Rating	Load Index	Speed Symbols	M+S	3PMSF	EU labelling			
							RR	WG	Noise	DB
LLA08	12.00R24	18	156/153	MK	●	●	D	B	B	73
LLA08	12.00R24	20	160/156	K	●	●	D	B	B	73
LLA08	12.00R20	18	154/151	K	●	●	D	B	B	73
LLA08	11R22.5	16	148/145	K	●	●	D	B	B	73
LLA38	385/55R22.5	18	158	K	●	●	D	B	B	73
LLA38	385/55R22.5	20	160	K	●	●	D	B	B	73
LLA38	385/65R22.5	20	160	K	●	●	D	B	B	73
LLA38	385/65R22.5	24	164	J	●	●	D	B	B	73
LLA38	425/65R22.5	20	165	J	●	●	D	B	B	73
LLA38	445/65R22.5	20	169	J	●	●	D	B	B	73
D960	315/80R22.5	18	154/150	M	●	●	D	B	B	75
D960	315/80R22.5	20	156/150	L	●	●	D	B	B	75
D960	13R22.5	18	156/150	K	●	●	D	B	B	75
D960	12.00R20	18	154/151	K	●	●	D	B	B	75
KMD406	315/80R22.5	20	156/150	K	●	●	D	B	B	73
KMD406	13R22.5	18	156/150	K	●	●	D	B	B	73
LDW807	315/80R22.5	18	154/150	M	●	●	D	C	B	73
LDW807	315/80R22.5	20	156/150	L	●	●	D	C	B	73
LDW807	315/70R22.5	16	154/150	L	●	●	D	C	B	73
LDW807	295/80R22.5	16	152/148	K	●	●	D	C	B	73
KWD600	315/80R22.5	18	154/150	M	●	●	D	B	B	74
KWD600	315/80R22.5	20	156/150(154/150)	L(M)	●	●	D	B	B	74
KWD600	315/70R22.5	16	154/150(152/148)	L(M)	●	●	D	B	B	74
KWD600	315/70R22.5	18	156/150(154/150)	L(M)	●	●	D	B	B	74
KWD600	295/80R22.5	16	152/148	M	●	●	D	B	B	74
KWT600	385/65R22.5	20	160(158)	K(L)	●	●	D	A	B	72
KWT600	385/65R22.5	24	164(158)	K(L)	●	●	D	A	B	72
KWT600	385/55R22.5	18	158	L	●	●	D	A	B	72
KWT600	385/55R22.5	20	160(158)	K(L)	●	●	D	A	B	72
LAU609	275/70R22.5	16	148/145	J	●	●	D	B	B	73

LONG HAUL



ETS100



- Suitable for steer and trailer axle of trucks running with high speed on highway.
- Low rolling resistance, reducing fuel consumption.
- Lasting grip and stability by hidden groove design.
- New pattern design, improving mileage for long distance transportation.



Size	Ply Rating	Load Index	Speed Symbols	Standard Rim	Max Load and Inflated Pressure				Overall Diameter (mm)	Section Width (mm)	Tread Depth (mm)	Operation Norm
					Dual		Single					
					kg	kPa	kg	kPa				
295/60R22.5	16	150/147	L	9.00	3075	900	3350	900	926	292	11.0	ETRTO
295/80R22.5	16	152/148	M	9.00	3150	850	3550	850	1044	298	14.0	ETRTO
295/80R22.5	18	154/149	M	9.00	3250	850	3750	850	1044	298	14.0	ETRTO
315/60R22.5	16	152/148	L	9.75	3150	900	3550	900	950	313	12.5	ETRTO
315/60R22.5	18	154/150(152/148)	L(M)	9.75	3350	900	3750	900	950	313	12.5	ETRTO
315/70R22.5	16	154/150(152/148)	L(M)	9.00	3350	900	3750	900	1014	312	15.0	ETRTO
315/70R22.5	18	156/150(154/150)	L(M)	9.00	3350	900	4000	900	1014	312	15.0	ETRTO
315/80R22.5	18	154/150	M	9.00	3350	825	3750	825	1076	312	15.0	ETRTO
315/80R22.5	20	156/150(154/150)	L(M)	9.00	3350	850	4000	850	1076	312	15.0	ETRTO
315/80R22.5	22	158/150(154/150)	L(M)	9.00	3350	900	4250	900	1076	312	15.0	ETRTO
385/55R22.5	18	158	L	12.25	--	--	4250	850	996	386	12.0	ETRTO
385/55R22.5	20	160(158)	K(L)	12.25	--	--	4500	900	996	386	12.0	ETRTO

ETD100



- Suitable for drive axle of trucks running with high speed on highway.
- Low rolling resistance, reducing fuel consumption.
- Lasting grip and stability by hidden groove design, with M+S and 3PMSF marking.
- New pattern design, improving mileage for long distance transportation.



Size	Ply Rating	Load Index	Speed Symbols	Standard Rim	Max Load and Inflated Pressure				Overall Diameter (mm)	Section Width (mm)	Tread Depth (mm)	Operation Norm
					Dual		Single					
					kg	kPa	kg	kPa				
295/60R22.5	16	150/147	L	9.00	3075	900	3350	900	926	292	14.0	ETRTO
295/80R22.5	16	152/148	M	9.00	3150	850	3550	850	1044	298	16.0	ETRTO
315/60R22.5	16	152/148	L	9.75	3150	900	3550	900	950	313	14.5	ETRTO
315/70R22.5	16	154/150(152/148)	L(M)	9.00	3350	900	3750	900	1014	312	16.5	ETRTO
315/70R22.5	18	156/150(154/150)	L(M)	9.00	3350	900	4000	900	1014	312	16.5	ETRTO
315/80R22.5	18	154/150	M	9.00	3350	825	3750	825	1076	312	17.0	ETRTO
315/80R22.5	20	156/150(154/150)	L(M)	9.00	3350	850	4000	850	1076	312	17.0	ETRTO

ETT100



- Suitable for trailer axle of trucks running with high speed on highway.
- Low rolling resistance, reducing fuel consumption.
- Lasting grip and stability by hidden groove design.
- New pattern design, improving mileage for long distance transportation.

Size	Ply Rating	Load Index	Speed Symbols	Standard Rim	Max Load and Inflated Pressure				Overall Diameter (mm)	Section Width (mm)	Tread Depth (mm)	Operation Norm
					Dual		Single					
					kg	kPa	kg	kPa				
385/55R19.5	18	156	J	12.25	--	--	4000	900	919	386	12.5	ETRTO
385/55R22.5	18	158	L	12.25	--	--	4250	850	996	386	12.0	ETRTO
385/55R22.5	20	160(158)	K(L)	12.25	--	--	4500	900	996	386	12.0	ETRTO
385/65R22.5	20	160(158)	K(L)	11.75	--	--	4500	900	1072	389	13.5	ETRTO
385/65R22.5	24	164(158)	K(L)	11.75	--	--	5000	900	1072	389	13.5	ETRTO
425/65R22.5	20	165	K	12.25	--	--	5150	825	1124	422	14.5	ETRTO
435/50R19.5	18	156	J	14.00	--	--	4000	850	931	438	12.5	ETRTO
435/50R19.5	20	160	J	14.00	--	--	4500	900	931	438	12.5	ETRTO
445/45R19.5	18	156	J	15.00	--	--	4000	900	895	446	12.5	ETRTO
445/45R19.5	20	160	J	15.00	--	--	4500	900	895	446	12.5	ETRTO

T830



MADE IN THAILAND



- Suitable for trailer axle of trucks running with high speed on highway.
- Low rolling resistance, reducing fuel consumption.
- Lasting grip and stability by hidden groove design.
- New pattern design, improving mileage for long distance transportation.

Size	Ply Rating	Load Index	Speed Symbols	Standard Rim	Max Load and Inflated Pressure				Overall Diameter (mm)	Section Width (mm)	Tread Depth (mm)	Operation Norm
					Dual		Single					
					kg	kPa	kg	kPa				
385/55R22.5	20	160(158)	J(L)	12.25	--	--	4500	900	996	386	15.5	ETRTO

L-T10



- Center ribs stiffeners with hidden grooves for wear and cornering performance.
- Edge blades to prevent groove edge river wear.
- Blades variable depth for optimum rib flexion, uniform wear and wet braking performance.

Size	Ply Rating	Load Index	Speed Symbols	Standard Rim	Max Load and Inflated Pressure				Overall Diameter (mm)	Section Width (mm)	Tread Depth (mm)	Operation Norm
					Dual		Single					
					kg	kPa	kg	kPa				
385/55R19.5	18	156	J	12.25	--	--	4000	900	919	386	12.5	ETRTO
435/50R19.5	20	160	J	14.00	--	--	4500	900	931	438	12.5	ETRTO
445/45R19.5	20	160	J	15.00	--	--	4500	900	895	446	12.5	ETRTO

T820



MADE IN THAILAND

- Suitable for trailer axle of trucks running with high speed on highway.
- Low rolling resistance, reducing fuel consumption.
- Lasting grip and stability by hidden groove design.
- New pattern design, improving mileage for long distance transportation.

Size	Ply Rating	Load Index	Speed Symbols	Standard Rim	Max Load and Inflated Pressure				Overall Diameter (mm)	Section Width (mm)	Tread Depth (mm)	Operation Norm
					Dual		Single					
					kg	kPa	kg	kPa				
385/55R19.5	18	156	J	12.25	--	--	4000	900	919	386	12.5	ETRTO
435/50R19.5	18	156	J	14.00	--	--	4000	850	931	438	12.5	ETRTO
435/50R19.5	20	160	J	14.00	--	--	4500	900	931	438	12.5	ETRTO
445/45R19.5	18	156	J	15.00	--	--	4000	900	895	446	15.5	ETRTO
445/45R19.5	20	160	J	15.00	--	--	4500	900	895	446	15.5	ETRTO

REGIONAL



KLS200



- Long life.
- Retreadability.
- Low eccentric wear.

Size	Ply Rating	Load Index	Speed Symbols	Standard Rim	Max Load and Inflated Pressure				Overall Diameter (mm)	Section Width (mm)	Tread Depth (mm)	Operation Norm
					Dual		Single					
					kg	kPa	kg	kPa				
265/70R19.5	14	136/134	M	7.50	2120	725	2240	725	867	262	13.5	ETRTO
265/70R19.5	16	140/138	M	7.50	2360	775	2500	775	867	262	13.5	ETRTO
265/70R19.5	18	143/141	J	7.50	2575	850	2725	850	867	262	13.5	ETRTO
285/70R19.5	18	146/144	M	8.25	2800	900	3000	900	895	283	13.5	ETRTO
285/70R19.5	18	150/148	J	8.25	3150	900	3350	900	895	283	13.5	ETRTO
305/70R19.5	18	148/145	M	9.00(8.25)	2900	850	3150	850	923	305	13.5	ETRTO

KLD200



- Typical block pattern design suitable for drive axle of trucks.
- Good braking and grip on the road.

Size	Ply Rating	Load Index	Speed Symbols	Standard Rim	Max Load and Inflated Pressure				Overall Diameter (mm)	Section Width (mm)	Tread Depth (mm)	Operation Norm
					Dual		Single					
					kg	kPa	kg	kPa				
265/70R19.5	14	136/134	M	7.50	2120	725	2240	725	867	262	15.5	ETRTO
265/70R19.5	16	140/138	M	7.50	2360	775	2500	775	867	262	15.5	ETRTO
285/70R19.5	18	146/144	M	8.25	2800	900	3000	900	895	283	16.0	ETRTO
305/70R19.5	18	148/145	M	9.00(8.25)	2900	850	3150	850	923	305	16.0	ETRTO

KTS300



- Suitable for steer and trailer axle of trucks running under a wide range of use, from highway to light unpaved road.
- Optimization of the shoulder block ,improving resistance to shoulder damage.
- Lasting grip and stability ,with stone rejection design.
- High wear resistance.

Size	Ply Rating	Load Index	Speed Symbols	Standard Rim	Max Load and Inflated Pressure				Overall Diameter (mm)	Section Width (mm)	Tread Depth (mm)	Operation Norm
					Dual		Single					
					kg	kPa	kg	kPa				
295/60R22.5	16	150/147	L	9.00	3075	900	3350	900	926	292	12.0	ETRTO
295/80R22.5	16	152/148	M	9.00	3150	850	3550	850	1044	298	16.5	ETRTO
295/80R22.5	18	154/149	M	9.00	3250	850	3750	850	1044	298	16.5	ETRTO
315/60R22.5	16	152/148	L	9.75	3150	900	3550	900	950	313	12.5	ETRTO
315/60R22.5	18	154/150(152/148)	L(M)	9.75	3350	900	3750	900	950	313	12.5	ETRTO
315/70R22.5	16	154/150(152/148)	L(M)	9.00	3350	900	3750	900	1014	312	15.5	ETRTO
315/70R22.5	18	156/150(154/150)	L(M)	9.00	3350	900	4000	900	1014	312	15.5	ETRTO
315/80R22.5	20	156/150(154/150)	L(M)	9.00	3350	850	4000	850	1076	312	15.5	ETRTO
315/80R22.5	22	158/150(154/150)	L(M)	9.00	3350	900	4250	900	1076	312	15.5	ETRTO
385/55R22.5	18	158	L	12.25	--	--	4250	850	996	386	13.5	ETRTO
385/55R22.5	20	160(158)	K(L)	12.25	--	--	4500	900	996	386	13.5	ETRTO
385/65R22.5	20	160(158)	K(L)	11.75	--	--	4500	900	1072	389	15.5	ETRTO
385/65R22.5	24	164(158)	K(L)	11.75	--	--	5000	900	1072	389	15.5	ETRTO

LFL185



- Optimization of the shoulder and the proportion of pattern block in the middle.
- Four straight groove matching S type variable angle groove design and ensure good steering and self-cleaning properties.
- Ultra strong skeleton materials application and promoting tire safety performance.
- High wear resistance of new formula application and wear mileage increases more than 20%.

Size	Ply Rating	Load Index	Speed Symbols	Standard Rim	Max Load and Inflated Pressure				Overall Diameter (mm)	Section Width (mm)	Tread Depth (mm)	Operation Norm
					Dual		Single					
					kg	kPa	kg	kPa				
295/80R22.5	16	152/148	M	9.00	3150	850	3550	850	1044	298	17.0	ETRTO
295/80R22.5	18	154/149	L	9.00	3250	850	3750	850	1044	298	17.0	ETRTO

KTD300



- Suitable for drive axle of trucks running under a wide range of use, from highway to light unpaved road.
- Optimization of the shoulder block,improving resistance to shoulder damage.
- Lasting grip and stability ,with M+S and 3PMSF marking.
- High wear resistance.

Size	Ply Rating	Load Index	Speed Symbols	Standard Rim	Max Load and Inflated Pressure				Overall Diameter (mm)	Section Width (mm)	Tread Depth (mm)	Operation Norm
					Dual		Single					
					kg	kPa	kg	kPa				
295/60R22.5	16	150/147	L	9.00	3075	900	3350	900	926	292	16.0	ETRTO
295/80R22.5	16	152/148	M	9.00	3150	850	3550	850	1044	298	20.5	ETRTO
315/60R22.5	16	152/148	L	9.75	3150	900	3550	900	950	313	17.5	ETRTO
315/70R22.5	16	154/150(152/148)	L(M)	9.00	3350	900	3750	900	1014	312	20.0	ETRTO
315/70R22.5	18	156/150(154/150)	L(M)	9.00	3350	900	4000	900	1014	312	20.0	ETRTO
315/80R22.5	18	154/150	M	9.00	3350	825	3750	825	1076	312	22.0	ETRTO
315/80R22.5	20	156/150(154/150)	L(M)	9.00	3350	850	4000	850	1076	312	22.0	ETRTO

LTL863



- Typical combined pattern design offers optimal trailer performance.
- Low rolling resistance.
- Wear-resistance compound, reducing shifting to prevent uneven wear.

Size	Ply Rating	Load Index	Speed Symbols	Standard Rim	Max Load and Inflated Pressure				Overall Diameter (mm)	Section Width (mm)	Tread Depth (mm)	Operation Norm
					Dual		Single					
					kg	kPa	kg	kPa				
385/55R22.5	18	158	L	12.25	---	---	4250	850	996	386	16.5	ETRTO
385/55R22.5	20	160(158)	J(L)	12.25	---	---	4500	900	996	386	16.5	ETRTO
385/65R22.5	20	160(158)	J(L)	11.75	---	---	4500	900	1072	389	16.5	ETRTO
385/65R22.5	24	164	J	11.75	---	---	5000	900	1072	389	16.5	ETRTO
445/65R22.5	20	169	J	14.00	---	---	5800	900	1150	444	18.0	ETRTO

LTL812



MADE IN THAILAND



- Long life.
- Retreadability.
- Low eccentric wear.

Size	Ply Rating	Load Index	Speed Symbols	Standard Rim	Max Load and Inflated Pressure				Overall Diameter (mm)	Section Width (mm)	Tread Depth (mm)	Operation Norm
					Dual		Single					
					kg	kPa	kg	kPa				
295/80R22.5	16	152/148	M	9.00	3150	850	3550	850	1044	298	17.0	ETRTO
295/80R22.5	18	154/149	M	9.00	3250	850	3750	850	1044	298	17.0	ETRTO
315/70R22.5	18	156/150(154/150)	L(M)	9.00	3350	900	4000	900	1014	312	17.0	ETRTO
315/80R22.5	18	154/150	M	9.00	3350	825	3750	825	1076	312	17.0	ETRTO
315/80R22.5	20	156/150	M	9.00	3350	850	4000	850	1076	312	17.0	ETRTO

LLF01



- Special design for all position of buses and steer and trailer axle of trucks.
- Good side-wear resistance.
- High-speed performance.

Size	Ply Rating	Load Index	Speed Symbols	Standard Rim	Max Load and Inflated Pressure				Overall Diameter (mm)	Section Width (mm)	Tread Depth (mm)	Operation Norm
					Dual		Single					
					kg	kPa	kg	kPa				
275/80R22.5	16	149/146	M	8.25	3000	850	3250	850	1012	276	14.5	ETRTO

LDL831



MADE IN THAILAND



- Typical block pattern design make good grip performance.
- High wear resistance and long life.
- Retreadability.
- Low eccentric wear.

Size	Ply Rating	Load Index	Speed Symbols	Standard Rim	Max Load and Inflated Pressure				Overall Diameter (mm)	Section Width (mm)	Tread Depth (mm)	Operation Norm
					Dual		Single					
					kg	kPa	kg	kPa				
285/70R19.5	18	146/144	M	8.25	2800	900	3000	900	895	283	19.0	ETRTO
295/80R22.5	16	152/148	L	9.00	3150	850	3550	850	1044	298	23.0	ETRTO
315/80R22.5	18	154/150	L	9.00	3350	825	3750	825	1076	312	23.0	ETRTO
315/80R22.5	20	156/150	L	9.00	3350	850	4000	850	1076	312	23.0	ETRTO

LLF02



- Special design for all position of buses and steer and trailer axle of trucks.
- Good side-wear resistance.
- High-speed performance.

Size	Ply Rating	Load Index	Speed Symbols	Standard Rim	Max Load and Inflated Pressure				Overall Diameter (mm)	Section Width (mm)	Tread Depth (mm)	Operation Norm
					Dual		Single					
					kg	kPa	kg	kPa				
295/80R22.5	16	152/148	M	9.00	3150	850	3550	850	1044	298	14.5	ETRTO
295/80R22.5	18	154/149	M	9.00	3250	850	3750	850	1044	298	14.5	ETRTO
315/80R22.5	18	154/150	M	9.00	3350	825	3750	825	1076	312	14.5	ETRTO
315/80R22.5	20	156/150	L	9.00	3350	850	4000	850	1076	312	14.5	ETRTO

F805



MADE IN THAILAND



- Special design for all position of buses and steer and trailer axle of trucks.
- Good side-wear resistance.
- High-speed performance.

Size	Ply Rating	Load Index	Speed Symbols	Standard Rim	Max Load and Inflated Pressure				Overall Diameter (mm)	Section Width (mm)	Tread Depth (mm)	Operation Norm
					Dual		Single					
					kg	kPa	kg	kPa				
275/70R22.5	16	148/145	M	8.25	2900	900	3150	900	958	276	14.5	ETRTO

LLA18



MADE IN THAILAND



- Suitable for all position of the trucks running on the multi road.

Size	Ply Rating	Load Index	Speed Symbols	Standard Rim	Max Load and Inflated Pressure				Overall Diameter (mm)	Section Width (mm)	Tread Depth (mm)	Operation Norm
					Dual		Single					
					kg	kPa	kg	kPa				
385/65R22.5	18	158	K	11.75	---	---	4250	850	1072	389	16.5	ETRTO
385/65R22.5	20	160	J	11.75	---	---	4500	900	1072	389	16.5	ETRTO
385/65R22.5	24	164	J	11.75	---	---	5000	900	1072	389	16.5	ETRTO

D905



MADE IN THAILAND



- Typical block pattern design suitable for drive axle of trucks.
- Good braking and grip on the road.

Size	Ply Rating	Load Index	Speed Symbols	Standard Rim	Max Load and Inflated Pressure				Overall Diameter (mm)	Section Width (mm)	Tread Depth (mm)	Operation Norm
					Dual		Single					
					kg	kPa	kg	kPa				
275/70R22.5	16	148/145	M	8.25	2900	900	3150	900	958	276	17.5	ETRTO
285/70R19.5	18	146/144	M	8.25	2800	900	3000	900	895	283	16.0	ETRTO
295/80R22.5	16	152/148	M	9.00	3150	850	3550	850	1044	298	17.5	ETRTO

LLA28



MADE IN THAILAND



- Suitable for all position of the trucks running on the multi road.

Size	Ply Rating	Load Index	Speed Symbols	Standard Rim	Max Load and Inflated Pressure				Overall Diameter (mm)	Section Width (mm)	Tread Depth (mm)	Operation Norm
					Dual		Single					
					kg	kPa	kg	kPa				
425/65R22.5	20	165	J	13.00	---	---	5150	825	1124	430	17.5	ETRTO

F820



- Suitable for all position axle of buses and medium trucks.

Size	Ply Rating	Load Index	Speed Symbols	Standard Rim	Max Load and Inflated Pressure				Overall Diameter (mm)	Section Width (mm)	Tread Depth (mm)	Operation Norm
					Dual		Single					
					kg	kPa	kg	kPa				
255/70R22.5	14	136/133	M	7.50	2060	700	2240	700	930	255	14.0	ETRTO
255/70R22.5	16	140/137	M	7.50	2300	800	2500	800	930	255	14.0	ETRTO
265/70R19.5	14	136/134	M	7.50	2120	725	2240	725	867	262	13.5	ETRTO
265/70R19.5	16	140/138	M	7.50	2360	775	2500	775	867	262	13.5	ETRTO
265/70R19.5	18	143/141	J	7.50	2575	850	2725	850	867	262	13.5	ETRTO
275/70R22.5	16	148/145	M	8.25	2900	900	3150	900	958	276	14.5	ETRTO
275/70R22.5	18	150/148	M	8.25	3150	900	3350	900	958	276	14.5	ETRTO
285/70R19.5	18	146/144	M	8.25	2800	900	3000	900	895	283	14.0	ETRTO

LFL827



- New technology for reducing tire weight.
- Low eccentric wear.
- Low fuel consumption.
- Good handling.

Size	Ply Rating	Load Index	Speed Symbols	Standard Rim	Max Load and Inflated Pressure				Overall Diameter (mm)	Section Width (mm)	Tread Depth (mm)	Operation Norm
					Dual		Single					
					kg	kPa	kg	kPa				
385/65R22.5	20	160	J	11.75	---	---	4500	900	1072	389	13.0	ETRTO
385/65R22.5	20	160(158)	K(L)	11.75	---	---	4500	900	1072	389	13.0	ETRTO
385/65R22.5	24	164	J	11.75	---	---	5000	900	1072	389	13.0	ETRTO

T820



- Suitable for trailer axle of trucks running on the high-grade road.

Size	Ply Rating	Load Index	Speed Symbols	Standard Rim	Max Load and Inflated Pressure				Overall Diameter (mm)	Section Width (mm)	Tread Depth (mm)	Operation Norm
					Dual		Single					
					kg	kPa	kg	kPa				
305/70R19.5	18	148/145	M	9.00(8.25)	2900	850	3150	850	923	305	12.0	ETRTO

LLF56+



- Special design for all position of buses and steer and trailer axle of trucks.

Size	Ply Rating	Load Index	Speed Symbols	Standard Rim	Max Load and Inflated Pressure				Overall Diameter (mm)	Section Width (mm)	Tread Depth (mm)	Operation Norm
					Dual		Single					
					kg	kPa	kg	kPa				
10R22.5	14	144/142	L	7.5	2650	850	2800	850	1020	254	14.0	ETRTO

F860



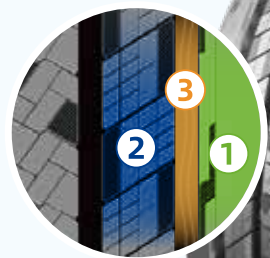
- Special design for all position of buses and steer and trailer axle of trucks.
- Good side-wear resistance.
- High-speed performance.

Size	Ply Rating	Load Index	Speed Symbols	Standard Rim	Max Load and Inflated Pressure				Overall Diameter (mm)	Section Width (mm)	Tread Depth (mm)	Operation Norm
					Dual		Single					
					kg	kPa	kg	kPa				
295/80R22.5	16	152/148	M	9.00	3150	850	3550	850	1044	298	16.0	ETRTO
295/80R22.5	18	154/149	M	9.00	3250	850	3750	850	1044	298	16.0	ETRTO

R-S30



- 1 Blades variable depth for optimum rib flexion, uniform wear and wet braking performance.
- 2 Slightly directional design to provide grip in forward & braking direction.
- 3 Groove stone ejectors help prevent stone trapping and drilling to enhance casing toughness and retreadability.

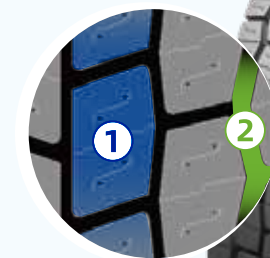


Size	Ply Rating	Load Index	Speed Symbols	Standard Rim	Max Load and Inflated Pressure				Overall Diameter (mm)	Section Width (mm)	Tread Depth (mm)	Operation Norm
					Dual		Single					
					kg	kPa	kg	kPa				
295/80R22.5	16	152/148	M	9.00	3150	850	3550	850	1044	298	15.5	ETRTO
295/80R22.5	18	154/149	M	9.00	3250	850	3750	850	1044	298	15.5	ETRTO
315/70R22.5	16	154/150(152/148)	L(M)	9.00	3350	900	3750	900	1014	312	15.5	ETRTO
315/70R22.5	18	156/150(154/150)	L(M)	9.00	3350	900	4000	900	1014	312	15.5	ETRTO
315/80R22.5	20	156/150(154/150)	L(M)	9.00	3350	850	4000	850	1076	312	15.5	ETRTO
315/80R22.5	22	158/150(154/150)	L(M)	9.00	3350	900	4250	900	1076	312	15.5	ETRTO
385/55R22.5	18	158	L	12.25	--	--	4250	850	996	386	13.5	ETRTO
385/55R22.5	20	160(158)	K(L)	12.25	--	--	4500	900	996	386	13.5	ETRTO
385/65R22.5	20	160(158)	K(L)	11.75	--	--	4500	900	1072	389	15.5	ETRTO
385/65R22.5	24	164(158)	K(L)	11.75	--	--	5000	900	1072	389	15.5	ETRTO

R-D30



- 1 New sipes Improve grip and resistance to tread tearing in severe conditions of use.
- 2 New sipes Improve grip and resistance to tread tearing in severe conditions of use.
- 3 New groove shapes provides greater traction on slippery road surfaces.



Size	Ply Rating	Load Index	Speed Symbols	Standard Rim	Max Load and Inflated Pressure				Overall Diameter (mm)	Section Width (mm)	Tread Depth (mm)	Operation Norm
					Dual		Single					
					kg	kPa	kg	kPa				
295/60R22.5	16	150/147	L	9.00	3075	900	3350	900	926	292	18.0	ETRTO
295/80R22.5	16	152/148	M	9.00	3150	850	3550	850	1044	298	20.5	ETRTO
295/80R22.5	18	154/149	L	9.00	3250	850	3750	850	1044	298	20.5	ETRTO
315/60R22.5	16	152/148	L	9.75	3150	900	3550	900	950	313	19.5	ETRTO
315/70R22.5	16	154/150(152/148)	L(M)	9.00	3350	900	3750	900	1014	312	20.0	ETRTO
315/70R22.5	18	156/150(154/150)	L(M)	9.00	3350	900	4000	900	1014	312	20.0	ETRTO
315/80R22.5	18	154/150	M	9.00	3350	825	3750	825	1076	312	22.0	ETRTO
315/80R22.5	20	156/150(154/150)	L(M)	9.00	3350	850	4000	850	1076	312	22.0	ETRTO

ON&OFF ROAD



KMA400



- Suitable for all position axle of trucks under all kinds of working conditions.
- Thick sidewall design protect against sidewall impacts and bruises.
- Stone rejection design protect groove bottom from stone puncture.
- Lasting grip and stability ,with M+S and 3PMSF marking.



Size	Ply Rating	Load Index	Speed Symbols	Standard Rim	Max Load and Inflated Pressure				Overall Diameter (mm)	Section Width (mm)	Tread Depth (mm)	Operation Norm
					Dual		Single					
					kg	kPa	kg	kPa				
13R22.5	18	156/150	K	9.75	3350	875	4000	875	1124	320	19.0	ETRTO
13R22.5	20	158/156	K	9.75	4000	900	4250	900	1124	320	19.0	ETRTO
295/80R22.5	16	152/148	K	9.00	3150	850	3550	850	1044	298	19.0	ETRTO
315/80R22.5	18	154/150	K	9.00	3350	825	3750	825	1076	312	19.0	ETRTO
315/80R22.5	20	156/150	K	9.00	3350	850	4000	850	1076	312	19.0	ETRTO
315/80R22.5	22	158/150	K	9.00	3350	900	4250	900	1076	312	19.0	ETRTO
425/65R22.5	20	165	K	13.00	---	---	5150	825	1124	422	18.5	ETRTO
445/65R22.5	20	169	J/K	14.00	---	---	5800	900	1150	444	18.5	ETRTO

KMD406



- Suitable for drive axle of trucks under all kinds of working conditions.
- Thick sidewall design protect against sidewall impacts and bruises.
- Stone rejection design protect groove bottom from stone puncture.
- Lasting grip and stability ,with M+S and 3PMSF marking.



Size	Ply Rating	Load Index	Speed Symbols	Standard Rim	Max Load and Inflated Pressure				Overall Diameter (mm)	Section Width (mm)	Tread Depth (mm)	Operation Norm
					Dual		Single					
					kg	kPa	kg	kPa				
13R22.5	18	156/150	K	9.75	3350	875	4000	875	1124	320	21.0	ETRTO
315/80R22.5	20	156/150	K	9.00	3350	850	4000	850	1076	312	21.0	ETRTO

KXA400



- Suitable for all position axle of trucks under all kinds of working conditions.
- Optimization of the shoulder block ,improving resistance to shoulder damage.
- Stone rejection design protect groove bottom from stone puncture.
- High wear resistance.

Size	Ply Rating	Load Index	Speed Symbols	Standard Rim	Max Load and Inflated Pressure				Overall Diameter (mm)	Section Width (mm)	Tread Depth (mm)	Operation Norm
					Dual		Single					
					kg	kPa	kg	kPa				
385/65R22.5	18	158	L	11.75	---	---	4250	850	1072	389	18.0	ETRTO
385/65R22.5	20	160(158)	K(L)	11.75	---	---	4500	900	1072	389	18.0	ETRTO
385/65R22.5	24	164	J	11.75	---	---	5000	900	1072	389	18.0	ETRTO
425/65R22.5	20	165	K	13.00	---	---	5150	825	1124	422	18.5	ETRTO

LLA01



- Typical combined pattern.
- Cut resistance compound.
- Good braking and grip.

Size	Ply Rating	Load Index	Speed Symbols	Standard Rim	Max Load and Inflated Pressure				Overall Diameter (mm)	Section Width (mm)	Tread Depth (mm)	Operation Norm
					Dual		Single					
					kg	kPa	kg	kPa				
13R22.5	18	156/150	K	9.75	3350	875	4000	875	1124	320	17.5	ETRTO

LLA08



- Typical combined pattern.
- Cut resistance compound.
- Good braking and grip.

Size	Ply Rating	Load Index	Speed Symbols	Standard Rim	Max Load and Inflated Pressure				Overall Diameter (mm)	Section Width (mm)	Tread Depth (mm)	Operation Norm
					Dual		Single					
					kg	kPa	kg	kPa				
12.00R20	18	154/151	K	8.50	3450	830	3750	830	1125	315	17.0	TRA
12.00R24	18	156/153	K	8.50	3650	775	4000	775	1226	313	17.0	ETRTO
12.00R24	20	160/156	K	8.50	4000	850	4500	850	1226	313	17.0	ETRTO
11R22.5	16	148/145	K	8.25	2900	850	3150	850	1054	279	15.5	ETRTO
12R22.5	16	152/148	K	9.00	3150	850	3550	850	1084	300	17.0	ETRTO
315/80R22.5	18	154/150	M	9.00	3350	825	3750	825	1076	312	17.0	ETRTO
315/80R22.5	20	156/150	L	9.00	3350	850	4000	850	1076	312	17.0	ETRTO

D960



- Deep and rigid block design for long life and good traction.
- Cut resistance compound.

Size	Ply Rating	Load Index	Speed Symbols	Standard Rim	Max Load and Inflated Pressure				Overall Diameter (mm)	Section Width (mm)	Tread Depth (mm)	Operation Norm
					Dual		Single					
					kg	kPa	kg	kPa				
12.00R20	18	154/151	K	8.50	3450	830	3750	830	1125	315	21.0	TRA
13R22.5	18	156/150	K	9.75	3350	875	4000	875	1124	320	21.0	ETRTO
315/80R22.5	18	154/150	M	9.00	3350	825	3750	825	1076	312	21.0	ETRTO
315/80R22.5	20	156/150	L	9.00	3350	850	4000	850	1076	312	21.0	ETRTO

LLA38



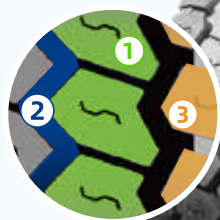
MADE IN THAILAND



- Typical combined pattern.
- Cut resistance compound.
- Good braking and grip.

Size	Ply Rating	Load Index	Speed Symbols	Standard Rim	Max Load and Inflated Pressure				Overall Diameter (mm)	Section Width (mm)	Tread Depth (mm)	Operation Norm
					Dual		Single					
					kg	kPa	kg	kPa				
385/55R22.5	18	158	L	12.25	---	---	4250	850	996	386	16.5	ETRTO
385/55R22.5	20	160	J	12.25	---	---	4500	900	996	386	16.5	ETRTO
385/65R22.5	18	158	K	11.75	---	---	4250	850	1072	389	16.5	ETRTO
385/65R22.5	20	160	K	11.75	---	---	4500	900	1072	389	16.5	ETRTO
385/65R22.5	24	164	J	11.75	---	---	5000	900	1072	389	16.5	ETRTO
425/65R22.5	20	165	J	13.00	---	---	5150	825	1124	422	17.5	ETRTO
445/65R22.5	20	169	J	14.00	---	---	5800	900	1150	444	18.0	ETRTO

M-A40



- 1 Tread Compound helps resist cuts and chips for enhanced retreadability.
- 2 Groove stone ejectors help prevent stone trapping and drilling to enhance casing toughness and retreadability.
- 3 All-position tread design helps enhance traction on and off the road.

Size	Ply Rating	Load Index	Speed Symbols	Standard Rim	Max Load and Inflated Pressure				Overall Diameter (mm)	Section Width (mm)	Tread Depth (mm)	Operation Norm
					Dual		Single					
					kg	kPa	kg	kPa				
13R22.5	18	156/150	K	9.75	3350	875	4000	875	1124	320	18.0	ETRTO
13R22.5	20	158/156	K	9.75	4000	900	4250	900	1124	320	18.0	ETRTO
315/80R22.5	20	156/150	K	9.00	3350	850	4000	850	1076	312	19.0	ETRTO
315/80R22.5	22	158/150	K	9.00	3350	900	4250	900	1076	312	19.0	ETRTO
385/65R22.5	20	160(158)	K(L)	11.75	---	---	4500	900	1072	389	18.0	ETRTO

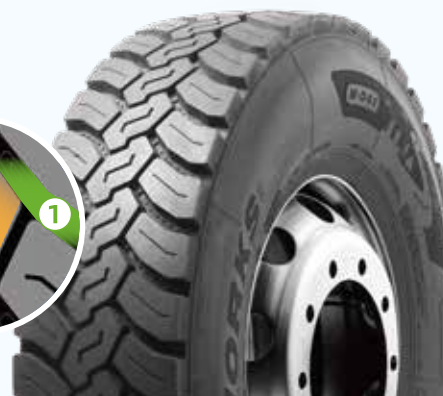
M-D40



- 1 Progressive, variable-width grooves, less stone retention.
- 2 New groove shapes provides greater traction on slippery road surfaces.
- 3 New tread compound improved resistance to wear and tear.

Size	Ply Rating	Load Index	Speed Symbols	Standard Rim	Max Load and Inflated Pressure				Overall Diameter (mm)	Section Width (mm)	Tread Depth (mm)	Operation Norm
					Dual		Single					
					kg	kPa	kg	kPa				
13R22.5	18	156/150	K	9.75	3350	875	4000	875	1124	320	21.0	ETRTO
13R22.5	20	158/156	K	9.75	4000	900	4250	900	1124	320	21.0	ETRTO
315/80R22.5	22	158/150	K	9.00	3350	900	4250	900	1076	312	21.0	ETRTO
315/80R22.5	20	156/150	K	9.00	3350	850	4000	850	1076	312	21.0	ETRTO

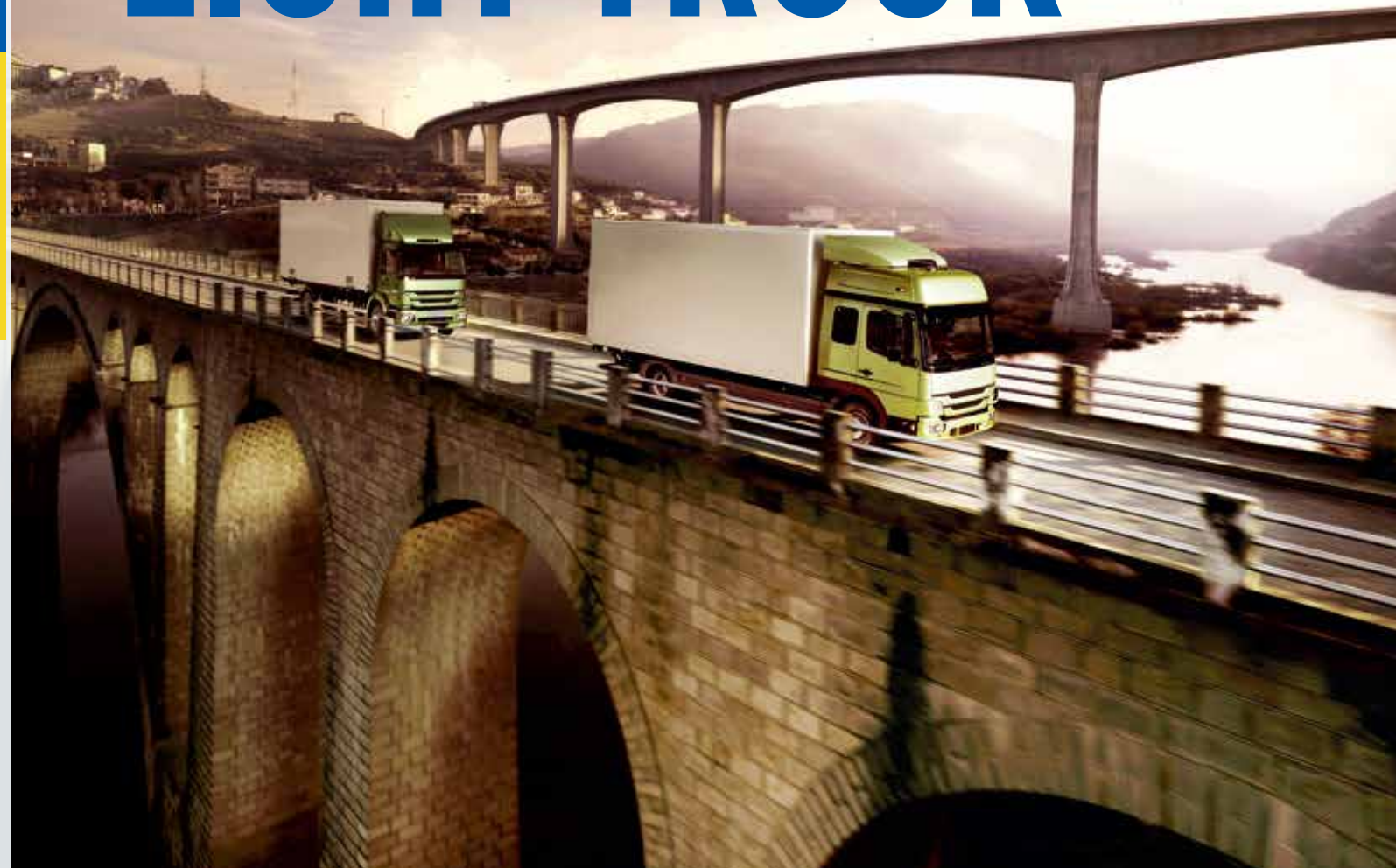
M-D41



- 1 Progressive, variable-width grooves, less stone retention.
- 2 New groove shapes provides greater traction on slippery road surfaces.
- 3 New tread compound improved resistance to wear and tear.

Size	Ply Rating	Load Index	Speed Symbols	Standard Rim	Max Load and Inflated Pressure				Overall Diameter (mm)	Section Width (mm)	Tread Depth (mm)	Operation Norm
					Dual		Single					
					kg	kPa	kg	kPa				
13R22.5	18	156/150	K	9.75	3350	875	4000	875	1124	320	21.0	ETRTO
13R22.5	20	158/156	K	9.75	4000	900	4250	900	1124	320	21.0	ETRTO
315/80R22.5	22	158/150	K	9.00	3350	900	4250	900	1076	312	21.0	ETRTO
315/80R22.5	20	156/150	K	9.00	3350	850	4000	850	1076	312	21.0	ETRTO

LIGHT TRUCK



KLS200



- Suitable for medium trucks running on the high-grade road.



Size	Ply Rating	Load Index	Speed Symbols	Standard Rim	Max Load and Inflated Pressure				Overall Diameter (mm)	Section Width (mm)	Tread Depth (mm)	Operation Norm
					Dual		Single					
					kg	kPa	kg	kPa				
215/75R17.5	14	126/124	M	6.00	1600	700	1700	700	767	211	12.5	ETRTO
215/75R17.5	16	135/133	J	6.00	2060	850	2180	850	767	211	12.5	ETRTO
225/75R17.5	12	126/125	M	6.75	1650	675	1700	675	783	226	12.5	ETRTO
225/75R17.5	14	129/127	M	6.75	1750	725	1850	725	783	226	12.5	ETRTO
235/75R17.5	14	132/130	M	6.75	1900	775	2000	775	797	233	12.5	ETRTO
235/75R17.5	16	141/140	J	6.75	2500	850	2575	850	797	233	12.5	ETRTO
235/75R17.5	18	143/141	J	6.75	2575	875	2725	875	797	233	12.5	ETRTO
245/70R17.5	14	134/132	M	7.50	2000	775	2120	775	789	248	12.5	ETRTO
245/70R17.5	16	136/134	M	7.50	2120	850	2240	850	789	248	12.5	ETRTO
245/70R17.5	18	143/141	J	7.50	2575	875	2725	875	789	248	12.5	ETRTO
245/70R19.5	12	129/127	M	7.50	1750	660	1850	660	839	248	12.5	TRA
245/70R19.5	14	133/131	M	7.50	1950	760	2060	760	839	248	12.5	TRA
245/70R19.5	14	133/131	M	7.50	1950	750	2060	750	839	248	12.5	ETRTO
245/70R19.5	16	136/134	M	7.50	2120	825	2240	825	839	248	12.5	ETRTO

KLD200



- Suitable for medium trucks running on the high-grade road.

Size	Ply Rating	Load Index	Speed Symbols	Standard Rim	Max Load and Inflated Pressure				Overall Diameter (mm)	Section Width (mm)	Tread Depth (mm)	Operation Norm
					Dual		Single					
					kg	kPa	kg	kPa				
215/75R17.5	14	126/124	M	6.00	1600	700	1700	700	767	211	14.0	ETRTO
225/75R17.5	12	126/125	M	6.75	1650	675	1700	675	783	226	14.5	ETRTO
225/75R17.5	14	129/127	M	6.75	1750	725	1850	725	783	226	14.5	ETRTO
235/75R17.5	14	132/130	M	6.75	1900	775	2000	775	797	233	14.5	ETRTO
245/70R17.5	14	134/132	M	7.50	2000	775	2120	775	789	248	14.5	ETRTO
245/70R17.5	16	136/134	M	7.50	2120	850	2240	850	789	248	14.5	ETRTO
245/70R19.5	12	129/127	M	7.50	1750	660	1850	660	839	248	14.5	TRA
245/70R19.5	14	133/131	M	7.50	1950	760	2060	760	839	248	14.5	TRA
245/70R19.5	14	133/131	M	7.50	1950	750	2060	750	839	248	14.5	ETRTO
245/70R19.5	16	136/134	M	7.50	2120	825	2240	825	839	248	14.5	ETRTO

LFL866



MADE IN THAILAND



- Extra wide tread design for high mileage and even wear.
- Zig-zag grooves for excellent handling.
- Optimize structure design.

Size	Ply Rating	Load Index	Speed Symbols	Standard Rim	Max Load and Inflated Pressure				Overall Diameter (mm)	Section Width (mm)	Tread Depth (mm)	Operation Norm
					Dual		Single					
					kg	kPa	kg	kPa				
205/65R17.5	16	129/127(132/132)	J(G)	6.00	1750	900	1850	900	711	204	12.5	ETRTO
215/75R17.5	14	126/124	M	6.00	1600	700	1700	700	767	211	14.5	ETRTO
215/75R17.5	16	135/133	J	6.00	2060	850	2180	850	767	211	14.5	ETRTO
235/75R17.5	14	132/130	M	6.75	1900	775	2000	775	797	233	14.5	ETRTO
235/75R17.5	16	141/140	J	6.75	2500	850	2575	850	797	233	14.5	ETRTO
235/75R17.5	18	143/141	J	6.75	2575	875	2725	875	797	233	14.5	ETRTO
245/70R17.5	14	134/132	M	7.50	2000	775	2120	775	789	248	14.5	ETRTO
245/70R17.5	18	143/141	J	7.50	2575	875	2725	875	789	248	14.5	ETRTO

KLT200



- Suitable for medium trucks running on the high-grade road.

Size	Ply Rating	Load Index	Speed Symbols	Standard Rim	Max Load and Inflated Pressure				Overall Diameter (mm)	Section Width (mm)	Tread Depth (mm)	Operation Norm
					Dual		Single					
					kg	kPa	kg	kPa				
205/65R17.5	16	129/127(132/132)	J(G)	6.00	1750	900	1850	900	711	204	12.5	ETRTO
215/75R17.5	16	135/133	J	6.00	2060	850	2180	850	767	211	12.5	ETRTO
235/75R17.5	16	141/140	J	6.75	2500	850	2575	850	797	233	12.5	ETRTO
235/75R17.5	18	143/141	J	6.75	2575	875	2725	875	797	233	12.5	ETRTO
245/70R17.5	18	143/141	J	7.50	2575	875	2725	875	789	248	12.5	ETRTO

LDL831



MADE IN THAILAND



- Typical block pattern design make good towing and grip on wet and dry road.
- Strong wear resistance and long life.
- Retreadability.

Size	Ply Rating	Load Index	Speed Symbols	Standard Rim	Max Load and Inflated Pressure				Overall Diameter (mm)	Section Width (mm)	Tread Depth (mm)	Operation Norm
					Dual		Single					
					kg	kPa	kg	kPa				
215/75R17.5	14	126/124	M	6.00	1600	700	1700	700	767	211	16.0	ETRTO
215/75R17.5	16	135/133	J	6.00	2060	850	2180	850	767	211	16.0	ETRTO
235/75R17.5	14	132/130	M	6.75	1900	775	2000	775	797	233	17.0	ETRTO
235/75R17.5	16	141/140	J	6.75	2500	850	2575	850	797	233	17.0	ETRTO
235/75R17.5	18	143/141	J	6.75	2575	875	2725	875	797	233	17.0	ETRTO
245/70R17.5	14	134/132	M	7.50	2000	775	2120	775	789	248	18.0	ETRTO
245/70R17.5	18	143/141	J	7.50	2575	875	2725	875	789	248	18.0	ETRTO

LLF26



MADE IN THAILAND

– Suitable for medium trucks running on the high-grade road.

Size	Ply Rating	Load Index	Speed Symbols	Standard Rim	Max Load and Inflated Pressure				Overall Diameter (mm)	Section Width (mm)	Tread Depth (mm)	Operation Norm
					Dual		Single					
					kg	kPa	kg	kPa				
9.5R17.5	14	129/127	M	6.75	1750	750	1850	750	842	240	12.0	ETRT0
9.5R17.5	18	143/141	M/J	6.75	2575	875	2725	875	842	240	12.0	ETRT0

LLF86



MADE IN THAILAND

– Suitable for medium trucks running on the high-grade road.

Size	Ply Rating	Load Index	Speed Symbols	Standard Rim	Max Load and Inflated Pressure				Overall Diameter (mm)	Section Width (mm)	Tread Depth (mm)	Operation Norm
					Dual		Single					
					kg	kPa	kg	kPa				
215/75R17.5	14	126/124	M	6.00	1600	700	1700	700	767	211	12.0	ETRT0
215/75R17.5	16	135/133	J	6.00	2060	850	2180	850	767	211	12.0	ETRT0

F820



MADE IN THAILAND

– Suitable for medium trucks running on the high-grade road.

Size	Ply Rating	Load Index	Speed Symbols	Standard Rim	Max Load and Inflated Pressure				Overall Diameter (mm)	Section Width (mm)	Tread Depth (mm)	Operation Norm
					Dual		Single					
					kg	kPa	kg	kPa				
205/75R17.5	14	124/122	M	6.00	1500	750	1600	750	753	204	12.5	ETRT0
245/70R19.5	16	136/134	M	7.50	2120	825	2240	825	839	248	13.0	ETRT0
245/70R19.5	18	141/140	J	7.50	2500	850	2575	850	839	248	13.0	ETRT0

LLA78



MADE IN THAILAND

– Suitable for medium trucks running on the high-grade road.

Size	Ply Rating	Load Index	Speed Symbols	Standard Rim	Max Load and Inflated Pressure				Overall Diameter (mm)	Section Width (mm)	Tread Depth (mm)	Operation Norm
					Dual		Single					
					kg	kPa	kg	kPa				
235/75R17.5	14	132/130	M	6.75	1900	775	2000	775	797	233	13.0	ETRT0
235/75R17.5	16	141/140	J	6.75	2500	850	2575	850	797	233	13.0	ETRT0
235/75R17.5	18	143/141	J	6.75	2575	875	2725	875	797	233	13.0	ETRT0

L-S20



- Suitable for medium trucks running on the high-grade road.
- Stone rejection design protect groove bottom from stone puncture.
- Safe driving and braking thanks to 4 Z-shaped longitudinal grooves.

Size	Ply Rating	Load Index	Speed Symbols	Standard Rim	Max Load and Inflated Pressure				Overall Diameter (mm)	Section Width (mm)	Tread Depth (mm)	Operation Norm
					Dual		Single					
					kg	kPa	kg	kPa				
205/75R17.5	14	124/122	M	6.00	1500	750	1600	750	753	204	10.5	ETRTO
215/75R17.5	14	126/124	M	6.00	1600	700	1700	700	767	211	11.5	ETRTO
215/75R17.5	16	135/133	J	6.00	2060	850	2180	850	767	211	11.5	ETRTO
225/75R17.5	12	126/125	M	6.75	1650	675	1700	675	783	226	11.5	ETRTO
225/75R17.5	14	129/127	M	6.75	1750	725	1850	725	783	226	11.5	ETRTO
235/75R17.5	14	132/130	M	6.75	1900	775	2000	775	797	233	12.5	ETRTO
235/75R17.5	16	141/140	J	6.75	2500	850	2575	850	797	233	12.5	ETRTO
235/75R17.5	18	143/141	J	6.75	2575	875	2725	875	797	233	12.5	ETRTO
245/70R17.5	14	134/132	M	7.50	2000	775	2120	775	789	248	12.5	ETRTO
245/70R17.5	16	136/134	M	7.50	2120	850	2240	850	789	248	12.5	ETRTO
245/70R17.5	18	143/141	J	7.50	2575	900	2725	900	789	248	12.5	ETRTO
245/70R19.5	14	133/131	M	7.50	1950	750	2060	750	839	248	12.5	ETRTO
245/70R19.5	16	136/134	M	7.50	2120	825	2240	825	839	248	12.5	ETRTO
245/70R19.5	18	141/140	J	7.50	2500	850	2575	850	839	248	12.5	ETRTO
265/70R17.5	16	140/138	M	7.50	2360	800	2500	800	817	262	13.5	ETRTO
265/70R17.5	18	145/143	J	7.50	2725	900	2900	900	817	262	13.5	ETRTO
265/70R19.5	14	136/134	M	7.50	2120	725	2240	725	867	262	13.5	ETRTO
265/70R19.5	16	140/138	M	7.50	2360	775	2500	775	867	262	13.5	ETRTO
265/70R19.5	18	143/141	J	7.50	2575	850	2725	850	867	262	13.5	ETRTO
305/70R19.5	18	148/145	M	9.00(8.25)	3150	850	2900	850	923	305	13.5	ETRTO

L-D20



- Suitable for medium trucks running on the high-grade road.
- New siping design improves wet performance.
- Low rolling resistance, reducing fuel consumption.

Size	Ply Rating	Load Index	Speed Symbols	Standard Rim	Max Load and Inflated Pressure				Overall Diameter (mm)	Section Width (mm)	Tread Depth (mm)	Operation Norm
					Dual		Single					
					kg	kPa	kg	kPa				
205/75R17.5	14	124/122	M	6.00	1500	750	1600	750	753	204	11.5	ETRTO
215/75R17.5	14	126/124	M	6.00	1600	700	1700	700	767	211	12.5	ETRTO
225/75R17.5	12	126/125	M	6.75	1650	675	1700	675	783	226	12.5	ETRTO
225/75R17.5	14	129/127	M	6.75	1750	725	1850	725	783	226	12.5	ETRTO
235/75R17.5	14	132/130	M	6.75	1900	775	2000	775	797	233	13.5	ETRTO
245/70R17.5	14	134/132	M	7.50	2000	775	2120	775	789	248	14.5	ETRTO
245/70R17.5	16	136/134	M	7.50	2120	850	2240	850	789	248	14.5	ETRTO
245/70R19.5	14	133/131	M	7.50	1950	750	2060	750	839	248	14.5	ETRTO
245/70R19.5	16	136/134	M	7.50	2120	825	2240	825	839	248	14.5	ETRTO
265/70R17.5	16	140/138	M	7.50	2360	800	2500	800	817	262	15.5	ETRTO
265/70R19.5	14	136/134	M	7.50	2120	725	2240	725	867	262	15.5	ETRTO
265/70R19.5	16	140/138	M	7.50	2360	775	2500	775	867	262	15.5	ETRTO
305/70R19.5	18	148/145	M	9.00(8.25)	3150	850	2900	850	923	305	13.5	ETRTO

L-T20



- Suitable for medium trucks running on the high-grade road.
- New siping design improves wet performance;
- Low rolling resistance, reducing fuel consumption.

Size	Ply Rating	Load Index	Speed Symbols	Standard Rim	Max Load and Inflated Pressure				Overall Diameter (mm)	Section Width (mm)	Tread Depth (mm)	Operation Norm
					Dual		Single					
					kg	kPa	kg	kPa				
205/65R17.5	16	129/127(132/132)	J(G)	6.00	1750	900	1850	900	711	204	12.5	ETRTO
215/75R17.5	16	135/133	J	6.00	2060	850	2180	850	767	211	12.5	ETRTO
235/75R17.5	16	141/140	J	6.75	2500	850	2575	850	797	233	12.5	ETRTO
235/75R17.5	18	143/141	J	6.75	2575	875	2725	875	797	233	12.5	ETRTO
235/75R17.5	18	143/141(145/145)	J(F)	6.75	2575	875	2725	875	797	233	12.5	ETRTO
245/70R17.5	18	143/141	J	7.50	2575	900	2725	900	789	248	12.5	ETRTO
245/70R17.5	18	143/141(146/146)	J(F)	7.50	2575	900	2725	900	789	248	12.5	ETRTO



WINTER



KWD600



- Suitable for drive axle of trucks under snow condition.
- Lasting grip and stability ,with 3PMSF marking.
- Optimized rib contact combats uneven wear and improves wet handling and braking.

Size	Ply Rating	Load Index	Speed Symbols	Standard Rim	Max Load and Inflated Pressure				Overall Diameter (mm)	Section Width (mm)	Tread Depth (mm)	Operation Norm
					Dual		Single					
					kg	kPa	kg	kPa				
295/80R22.5	16	152/148	M	9.00	3150	850	3550	850	1044	298	20.5	ETRTO
315/70R22.5	16	154/150(152/148)	L(M)	9.00	3350	900	3750	900	1014	312	20.0	ETRTO
315/70R22.5	18	156/150(154/150)	L(M)	9.00	3350	900	4000	900	1014	312	20.0	ETRTO
315/80R22.5	18	154/150	M	9.00	3350	825	3750	825	1076	312	22.0	ETRTO
315/80R22.5	20	156/150(154/150)	L(M)	9.00	3350	850	4000	850	1076	312	22.0	ETRTO

KWT600



- For trailer axle of trucks under snow condition use only.
- Lasting grip and stability ,with 3PMSF marking.
- Optimized rib contact combats uneven wear and improves wet handling and braking.

Size	Ply Rating	Load Index	Speed Symbols	Standard Rim	Max Load and Inflated Pressure				Overall Diameter (mm)	Section Width (mm)	Tread Depth (mm)	Operation Norm
					Dual		Single					
					kg	kPa	kg	kPa				
385/55R22.5	18	158	L	12.25	--	--	4250	850	996	386	14.5	ETRTO
385/55R22.5	20	160(158)	K(L)	12.25	--	--	4500	900	996	386	14.5	ETRTO
385/65R22.5	20	160(158)	K(L)	11.75	--	--	4500	900	1072	389	15.5	ETRTO
385/65R22.5	24	164(158)	K(L)	11.75	--	--	5000	900	1072	389	15.5	ETRTO

LDW807



- High safety and good handling.
- Optimized rib contact combats uneven wear and improves wet handling and braking.
- Long life.

Size	Ply Rating	Load Index	Speed Symbols	Standard Rim	Max Load and Inflated Pressure				Overall Diameter (mm)	Section Width (mm)	Tread Depth (mm)	Operation Norm
					Dual		Single					
					kg	kPa	kg	kPa				
295/80R22.5	16	152/148	K	9.00	3150	850	3550	850	1044	298	20.0	ETRTO
315/70R22.5	16	154/150	L	9.00	3350	900	3750	900	1014	312	20.0	ETRTO
315/80R22.5	18	154/150	M	9.00	3350	825	3750	825	1076	312	20.0	ETRTO
315/80R22.5	20	156/150	L	9.00	3350	850	4000	850	1076	312	20.0	ETRTO



COACH & URBAN



LAU609



- Enhanced sidewall ensures high safety.
- Tire strength is increased by 35%, with application of ST steel cord.
- Tire bead cracking is prevented, with application fiber layer in bead area.

Size	Ply Rating	Load Index	Speed Symbols	Standard Rim	Max Load and Inflated Pressure				Overall Diameter (mm)	Section Width (mm)	Tread Depth (mm)	Operation Norm
					Dual		Single					
					kg	kPa	kg	kPa				
275/70R22.5	16	148/145	J	8.25	2900	900	3150	900	958	276	21.0	ETRTO

