



# 2019 Tire Catalogue



**SN TIRE**  
SHANDONG NEW CONTINENT TIRE CO., LTD.

📍 Add: Lushan Industrial Zone, Yishui City, Shandong, China  
🌐 Web: [www.snctire.com](http://www.snctire.com)

# Company History



SNC is located at the famous tourism city Yishui, which owns AAAA national tourist attractions. The factory covers an area of 433 mu ( 288668.11 m<sup>2</sup> ), with annual capacity of 12 million pieces of PCR tires.

Founded in October 2012, Shandong New Continent Tire Co., Ltd. (SNC) is a subsidiary of Shandong Yinbao Tyre Group, which is a large modernized manufacture of passenger car radial tires and carbon black. As one of the most famous PCR manufacturers in China, the company owns two brands: COMFORSER and ROADCRUZA. The company has first-class advanced equipment imported from Europe and US, such as extruders, calenders, cutting machine, uniformity and dynamic balance test machine.

Shandong New Continent Tire Co., Ltd has been committed to building " No.1 Brand of SUV Tires" and providing the most professional SUV and UHP tires for automobiles.

The core equipment of production line adopts the AB system which is stable and reliable. The two brands have successively passed all kinds of system certifications including the ISO9001 quality management, US DOT, Europe ECE, Brazil INMETRO, Indonesia SNI, China CCC, ISO10012 metering management system Certification.

In the future, SNC will continue the road of environmental and sustainable development, devoting wholeheartedly to the production of high quality tires, so as to truly realize quiet, comfortable and outstanding driving performance for users all around world.

**BUILD NO.1 BRAND  
OF CHINESE SUV TIRES.**



**MORE COURAGE,  
MORE PASSION**



## AVAILABLE LINE-UP BY CATEGORIES

### UHP SERIES



**CF710**



**CF720**



**CF700**

### HP SERIES



**CF510**



**CF620**



**CF600**



**SPORTS K4**

### RUN-FLAT SERIES



**CF710**



**CF4000**

### SUV SERIES



M/T  
**CF3000**



H/T  
**CF2000**



A/T  
**CF1000**



SUV/CUV  
**CF4000**

**COMMERCIAL/VAN**

**COMPETITION**

**WINTER** SERIES

**STUDLESS**

**STUDDABLE**

**COMMERCIAL/VAN**



**CF300**



**THRUSTER**



**CF930**



**CF970**



**CF360**



**CF350**



**CF960**



**CF950**

## UHP SERIES



### CF710

### CF720

### CF700

UHP

UHP

UHP



205/55R16	235/45ZR17	★ 255/35ZR19	305/45ZR22	205/45ZR17
215/55R16	245/45ZR17	★ 275/35ZR19	245/40ZR22	215/45ZR17
215/55R16	255/45ZR17	▲ 225/35ZR20	305/40ZR22	225/45ZR17
225/55R16	▲ 215/45ZR18	245/35ZR20	245/35ZR22	235/45ZR17
★ 205/55R17	225/45ZR18	255/35ZR20	265/35ZR22	245/45ZR18
215/55R17	235/45ZR18	▲ 275/35ZR20	295/35ZR24	245/45ZR19
225/55R17	245/45ZR18	▲ 285/35ZR20	305/35ZR24	195/40ZR17
235/55R17	255/45ZR18	▲ 315/35ZR20	245/30ZR22	205/40ZR17
225/55R19	245/45ZR19	▲ 275/30ZR19	295/30ZR22	215/40ZR17
235/55R19	★ 195/40ZR17	295/30ZR19	255/30ZR24	245/40ZR17
245/55R19	205/40ZR17	★ 225/30ZR20	295/30ZR26	225/40ZR18
185/50R16	205/40ZR18	★ 275/30ZR20	305/30ZR26	235/40ZR18
195/50R16	215/40ZR18		325/30ZR28	255/40ZR19
205/50R16	225/40ZR18		295/25ZR22	275/40ZR19
205/50R17	235/40ZR18		275/25ZR24	245/40ZR20
205/50R17	245/40ZR18		275/25ZR26	215/35ZR18
215/50R17	255/40ZR18		295/25ZR28	235/35ZR19
225/50R17	▲ 275/40ZR18		305/25ZR28	225/35ZR20
235/50R17	225/40ZR19			245/35ZR20
255/50R19	235/40ZR19			275/35ZR20
195/45R15	★ 255/40ZR19			225/30ZR20
195/45R16	245/40ZR19			
195/45R16	275/40ZR19			
205/45R16	★ 215/35ZR18			
205/45R17	★ 255/35ZR18			
215/45ZR17	★ 235/35ZR19			
225/45ZR17	245/35ZR19			

63 Sizes

Page:15-16

18 Sizes

Page:17-18

21 Sizes

Page:39

## HP SERIES



### CF510

### CF620

### CF600

### SPORTS K4

HP

HP

HP

HP



★ 155/80R13	205/60R16	155/80R13	155/80R13	185/75R14
185/70R13	215/60R16	165/80R14	155/70R13	155/65R14
185/70R14	225/60R16	165/70R13	165/70R13	165/65R14
195/70R14	235/60R16	175/70R13	175/70R13	165/65R15
205/70R14	185/55R15	185/70R13	165/70R14	165/60R14
215/70R14	195/55R15	165/70R14	175/70R14	155/60R15
205/70R15	205/55R15	175/70R14	185/70R14	165/60R15
215/70R15	195/55R16	185/70R14	195/70R14	175/60R15
★ 165/65R13	205/55R16	155/65R13	215/70R15	165/55R14
185/65R14	195/50R15	165/65R13	175/65R14	165/55R15
195/65R14	205/50R15	175/65R14	185/65R14	175/55R15
185/65R15		185/65R14	175/65R15	165/50R15
195/65R15		185/65R15	185/65R15	165/50R16
195/65R15		195/65R15	195/65R15	165/45R15
205/65R15		205/65R15	205/65R15	165/45R16
215/65R15		205/65R16	215/65R15	165/40R16
175/60R13		185/60R14	185/60R14	
185/60R14		195/60R14	185/60R15	
195/60R14		185/60R15	195/60R15	
205/60R14		195/60R15	205/60R15	
185/60R15		205/60R15	215/60R15	
195/60R15		205/60R16	225/60R15	
195/60R15		215/60R16	195/60R16	
205/60R15		195/55R15	205/60R16	
215/60R15		205/55R16	215/60R16	
225/60R15			225/60R16	
195/60R16			235/60R16	

36 Sizes

Page:19-20

25 Sizes

Page:40

27 Sizes

Page:41

16 Sizes

Page:42

Note: ★ Coming Soon. ▲ Pending.

## RUN-FLAT SERIES



**CF710**

UHP



- 205/55RF16
- 225/55RF17
- 225/50RF17
- ★ 255/50RF19
- ▲ 225/45RF17
- 245/45RF18
- ★ 245/45RF19
- 225/40RF18
- 245/40RF18
- ★ 245/40RF19
- ★ 275/40RF19
- ▲ 205/45RF17
- ▲ 205/50RF17
- ▲ 255/35RF18
- ▲ 225/45RF18
- ▲ 255/40RF18
- ▲ 225/40RF19

**17 Sizes**

Page:37



**CF4000**

SUV/CUV



- 255/55RF18
- 245/50RF18
- ▲ 245/40RF20

**3 Sizes**

Page:38

## SUV SERIES



**CF3000**

M/T



- 255/55R19 33x12.50R24LT 33x12.50R15LT POR
- 185/85R16LT 35x12.50R15LT 33x12.50R20LT POR
- 215/85R16LT 35x12.50R17LT 35x12.50R15LT POR
- 235/85R16LT 35x12.50R18LT 35x12.50R17LT POR
- 215/75R15LT 35x12.50R20LT 35x12.50R18LT POR
- 235/75R15LT 35x12.50R22LT 35x12.50R20LT POR
- 225/75R16LT 35x12.50R24LT 35x12.50R22LT POR
- 245/75R16LT 37x12.50R16.5LT 37x13.50R20LT POR
- 265/75R16LT 37x12.50R17LT 305/70R16LT POR
- 285/75R16LT 35x13.50R20LT 32x11.50R15LT POR
- 315/75R16LT 37x13.50R20LT 225/75R16LT POR
- 205/70R15LT 37x13.50R22LT 245/75R16LT POR
- 235/70R16LT 37x13.50R24LT 265/70R17LT POR
- 245/70R16LT 37x13.50R26LT 285/70R17LT POR
- 305/70R16LT 38x15.50R20LT 33x12.50R17LT POR
- 265/70R17LT 40x15.50R24LT
- 285/70R17LT 40x15.50R26LT
- 265/65R17LT 42x15.50R28LT
- 275/65R18LT 255/55R19 POR
- 285/65R18LT 235/85R16LT POR
- 31x10.50R15LT 215/75R15LT POR
- 32x11.50R15LT 235/75R15LT POR
- 33x12.50R15LT 265/75R16LT POR
- 33x12.50R17LT 285/75R16LT POR
- 33x12.50R18LT 315/75R16LT POR
- 33x12.50R20LT 275/65R18LT POR
- 33x12.50R22LT 285/65R18LT POR
- 31x10.50R15LT POR

**70 Sizes**

Page:21-24



**CF2000**

H/T



- 215/75R15 225/60R17
- 225/75R15 235/60R17
- 235/75R15 235/60R18
- 265/75R16 265/60R18
- 205/70R14 275/60R20
- 205/70R15 235/55R17
- 215/70R16 215/55R18
- 225/70R16 235/55R18
- 235/70R16 235/50R18
- 245/70R16 215/75R15LT
- 255/70R16 245/70R17LT
- 265/70R16 265/70R17LT
- 275/70R16
- 205/65R16
- 215/65R16
- 225/65R17
- 235/65R17
- 245/65R17
- 255/65R17
- 265/65R17
- 275/65R17
- 285/65R17
- 265/65R18
- 275/65R18
- 205/60R16
- 215/60R17

**38 Sizes**

Page:25-26



**CF1000**

A/T



- OWL P215/75R15
- OWL P235/75R15
- OWL 225/70R15
- OWL P215/70R16
- OWL P235/70R16
- OWL P245/70R16
- OWL 255/70R16
- OWL P265/70R16
- OWL P265/65R17
- OWL 225/60R17
- OWL 235/60R16
- OWL 255/60R18
- OWL 285/60R18
- OWL 235/55R16
- OWL 265/50R20
- OWL 235/85R16LT
- OWL 245/75R16LT
- OWL 265/75R16LT
- OWL 285/75R16LT
- OWL 265/70R16LT
- OWL 265/70R17LT
- OWL 285/70R17LT
- OWL 30x9.50R15LT
- OWL 31x10.50R15LT
- OWL 35x12.50R17LT
- OWL 35x12.50R18LT
- OWL 35x12.50R20LT

**27 Sizes**

Page:27-28



**CF4000**

SUV/CUV



- 225/60R18
- 245/60R18
- 225/55ZR18
- 255/55ZR18
- 255/55ZR19
- 275/55ZR20
- 245/50ZR18
- 265/50ZR20
- 285/50ZR20
- ★ 245/40R20
- 275/45ZR20
- 275/40R20
- 295/35ZR21

**13 Sizes**

Page:29-30

**Note:** OWL: Outlined White Letter. ★ Coming Soon. ▲ Pending.

## COMMERCIAL/VAN

## COMPETITION



### CF300

### CF350

### THRUSTER

COMMERCIAL/VAN

COMMERCIAL/VAN

COMPETITION



BSW	185R14C	155R13C
WSW	185R14C	165R13C
BSW	195R14C	175R13C
WSW	195R14C	165R14C
	205R14C	185R14C
BSW	195R15C	195R14C
WSW	195R15C	195R15C
WSW	205/75R14C	175/75R16C
WSW	205/75R15C	★ 185/75R16C
	185/75R16C	215/75R16C
	195/75R16C	165/70R13C
WSW	205/75R16C	165/70R14C
	225/75R16C	175/70R14C
	195/70R15C	185/70R14C
WSW	205/70R15C	★ 195/70R15C
	215/70R15C	175/65R14C
	225/70R15C	★ 195/65R16C
	195/65R16C	205/65R15C
	205/65R16C	★ 215/65R15C
	215/65R16C	★ 235/65R16C
	225/65R16C	215/60R16C
	235/65R16C	215/60R17C
		235/60R17C

22 Sizes

23 Sizes

5 Sizes

Page:43

Page:44

Page:31-32

## WINTER SERIES



### CF930

### CF960

### CF950

### CF970

### CF360

STUDLESS

STUDLESS

STUDLESS

STUDDABLE

COMMERCIAL/VAN



165/70R13	215/75R15 255/45R19	215/70R16	195/65R15	185R14C
165/70R14	245/75R17 245/45R20	245/70R16	185/75R16C	215/75R14C
175/70R14	235/70R16 275/45R20	215/65R16		185/75R16C
185/70R14	285/70R17 275/45R21	225/65R17		195/75R16C
175/65R14	235/65R18 255/40R18	235/65R17		195/70R15C
185/65R14	265/60R18 275/40R19	265/65R17		215/70R15C
175/65R15	285/60R18 245/40R20	215/60R17		225/70R15C
185/65R15	235/55R17 275/40R20	225/60R17		195/65R16C
195/65R15	215/55R18 275/40R22	235/60R17		205/65R16C
205/65R15	235/55R18 275/35R20	235/60R18		215/65R16C
185/60R14	245/55R19 315/35R20	255/55R18		235/65R16C
185/60R15	275/55R19	255/50R19		
195/60R15	215/50R17	225/45R17		
205/60R16	235/50R18	245/45R18		
215/60R16	245/50R18	225/40R18		
195/55R15	235/50R19			
195/55R16	245/50R20			
205/55R16	285/50R20			
215/55R16	275/50R21			
225/55R16	235/45R17			
215/55R17	225/45R18			
225/55R17	255/45R18			
195/50R15	275/45R18			
205/50R17	225/45R19			
225/50R17	245/45R19			

25 Sizes

36 Sizes

15 Sizes

2 Sizes

11 Sizes

Page:33-34

Page:35-36

Page:45

Page:46

Page:47

Note: WSW:White Sidewall. BSW:Black Sidewall. ★ Coming Soon. ▲ Pending.



# CF710 UHP



### 3+1 Longitudinal grooves

enhance the wet grip performance to prevent the aquaplaning.

### Asymmetric tread design

outside with strong shoulder for good turning stability, inside shoulder with multisipes for excellent water drainage.

### Variable pitch design

from inside and outside greatly reduces the riding noise.

### Wider centre rib

for stable handling with straight line driving at high speed.



Applicable models



Size	LI/SS	Std/XL	Rim	Dimensions (mm)			Max.Load (kg)	Max.Press (kPa)	UTQG
				OD	SW	NSD			
205/55R16	91V	Std	6.5J	632	214	8.2	475	300	380 A A
215/55R16	97V	XL	7J	642	226	8.0	615	340	380 A A
215/55R16	97W	XL	7J	642	226	8.0	730	340	380 A A
225/55R16	95V	Std	7J	654	233	8.0	730	300	380 A A
★ 205/55R17	95W	XL	6.5J	658	214	8.2	690	340	380 A A
215/55R17	98W	XL	7J	668	226	8.0	462	340	380 A A
225/55R17	101W	XL	7J	680	233	8.0	500	340	380 A A
235/55R17	103W	XL	7.5J	690	245	8.2	545	340	380 A A
225/55R19	103W	XL	7J	731	233	8.2	450	340	380 A A
235/55R19	105W	XL	7.5J	741	245	8.2	500	340	380 A A
245/55R19	107W	XL	7.5J	753	253	8.2	487	340	380 A A
185/50R16	81V	Std	6J	592	194	8.0	462	300	380 A A
195/50R16	84V	Std	6J	601	201	8.0	690	300	380 A A
205/50R16	87V	Std	6.5J	612	214	8.0	750	300	380 A A
205/50R17	89V	Std	6.5J	638	214	8.0	825	300	380 A A
205/50R17	93W	XL	6.5J	638	214	8.0	875	340	380 A A
215/50R17	95W	XL	7J	648	226	8.0	580	340	380 A A
225/50R17	98W	XL	7J	658	233	8.0	650	340	380 A A
235/50R17	100W	XL	7.5J	668	245	8.2	690	340	380 A A
255/50R19	107W	XL	8J	739	265	8.2	750	340	380 A A
195/45R15	82V	XL	6.5J	557	195	8.2	800	340	380 A A
195/45R16	80V	Std	6.5J	582	195	8.0	560	300	380 A A
195/45R16	84V	XL	6.5J	582	195	8.0	615	340	380 A A
205/45R16	83V	Std	7J	590	206	8.0	670	300	380 A A
205/45R17	88W	XL	7J	616	206	8.0	730	340	380 A A
215/45ZR17	91W	XL	7J	626	213	8.0	775	340	380 A A
225/45ZR17	94W	XL	7.5J	634	225	8.0	850	340	380 A A
235/45ZR17	97W	XL	8J	644	236	8.2	500	340	380 A A
245/45ZR17	99W	XL	8J	652	243	8.2	500	340	380 A A
255/45ZR17	102W	XL	8.5J	662	255	8.3	670	340	380 A A
▲ 215/45ZR18	93W	XL	7J	651	213	8.0	875	340	380 A A
225/45ZR18	95W	XL	7.5J	659	225	8.0	650	340	380 A A
235/45ZR18	98W	XL	8J	669	236	8.2	690	340	380 A A
245/45ZR18	100W	XL	8J	677	243	8.2	750	340	380 A A
255/45ZR18	103W	XL	8.5J	687	255	8.5	800	340	380 A A
245/45ZR19	102W	XL	8J	703	243	8.2	875	340	380 A A
★ 195/40ZR17	81W	XL	7J	588	200	8.2	530	340	380 A A
205/40ZR17	84W	XL	7.5J	596	212	8.0	580	340	380 A A
205/40ZR18	86W	XL	7.5J	621	212	8.0	630	340	380 A A
215/40ZR18	89W	XL	7.5J	629	218	8.0	690	340	380 A A
225/40ZR18	92W	XL	8J	637	230	8.0	730	340	380 A A
235/40ZR18	95W	XL	8.5J	645	241	8.2	775	340	380 A A
245/40ZR18	97W	XL	8.5J	653	248	8.2	615	340	380 A A
255/40ZR18	99W	XL	9J	661	260	8.5	710	340	380 A A
▲ 275/40ZR18	103Y	XL	9.5J	677	278	8.2	800	340	380 A A
225/40ZR19	93W	XL	8J	663	230	8.0	710	340	380 A A
235/40ZR19	96W	XL	8.5J	671	241	8.2	600	340	380 A A
★ 255/40ZR19	100Y	XL	9J	687	260	8.2	710	340	380 A A
245/40ZR19	98W	XL	8.5J	679	248	8.2	875	340	380 A A
275/40ZR19	105W	XL	9.5J	703	278	8.5	925	340	380 A A
★ 215/35ZR18	84W	XL	7.5J	607	218	8.2	975	340	380 A A
★ 255/35ZR18	94Y	XL	9J	635	260	8.2	975	340	380 A A
★ 235/35ZR19	91W	XL	8.5J	647	241	8.2	850	340	380 A A
245/35ZR19	93W	XL	8.5J	655	248	8.2	650	340	380 A A
★ 255/35ZR19	96Y	XL	9J	661	260	8.2	710	340	380 A A
★ 275/35ZR19	96Y	Std	9.5J	675	278	8.2	750	290	380 A A
▲ 225/35ZR20	90Y	XL	8J	666	230	8.2	925	340	380 A A
245/35ZR20	95W	XL	8.5J	680	248	8.2	650	340	380 A A
255/35ZR20	97W	XL	9J	686	260	8.5	800	340	380 A A
▲ 275/35ZR20	102Y	XL	9.5J	700	278	8.2	690	340	380 A A
▲ 285/35ZR20	104Y	XL	10J	708	290	8.2	730	340	380 A A
▲ 315/35ZR20	110W	XL	11J	728	320	8.2	650	340	380 A A
▲ 275/30ZR19	96Y	XL	9.5J	649	278	8.2	730	340	380 A A
295/30ZR19	100W	XL	10.5J	661	301	8.5	850	340	380 A A
★ 225/30ZR20	85W	XL	8J	644	230	8.2	900	340	380 A A
★ 275/30ZR20	97Y	XL	9.5J	674	278	8.2	1060	340	380 A A

# CF720 UHP



**4+4 circumferential grooves**  
for excellent water drainage in wet conditions.

**Flowing uni-directional tread design**  
on road driving considered high speed stability, off road driving, and strong traction. Given tough tread block.

**Newly developed shoulder design**  
solve irregular wear problem and minimize noise level.

**Silica tread compound**  
for better grip performance on both dry and wet surface.

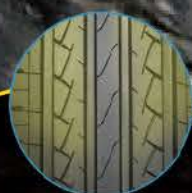


Applicable models



Size	LI/SS	Std/XL	Rim	Dimensions (mm)			Max.Load (kg)	Max.Press (kPa)	UTQG
				OD	SW	NSD			
305/45ZR22	118W	XL	10J	833	303	8.5	1320	340	420 A A
245/40ZR22	101W	XL	8.5J	755	248	8.5	825	340	420 A A
305/40ZR22	114W	XL	11J	803	313	8.5	1180	340	420 A A
245/35ZR22	97W	XL	8.5J	731	248	8.5	730	340	420 A A
265/35ZR22	102W	XL	9.5J	745	271	8.5	850	340	420 A A
295/35ZR24	110W	XL	10.5J	816	301	8.5	1060	340	420 A A
305/35ZR24	112W	XL	11J	824	313	8.5	1120	340	420 A A
245/30ZR22	92W	XL	8.5J	707	248	8.5	630	340	420 A A
295/30ZR22	103W	XL	10.5J	737	301	8.5	875	340	420 A A
255/30ZR24	97W	XL	9J	764	260	8.5	730	340	420 A A
295/30ZR26	107W	XL	10.5J	838	301	8.5	975	340	420 A A
305/30ZR26	109W	XL	11J	844	313	8.5	1030	340	420 A A
325/30ZR28	115Y	XL	11.5	729	331	8.5	1215	340	420 A A
295/25ZR22	97Y	XL	10.5J	707	301	8.5	730	340	420 A A
275/25ZR24	96W	XL	10J	748	283	8.5	710	340	420 A A
275/25ZR26	98W	XL	10J	798	283	8.5	750	340	420 A A
295/25ZR28	103Y	XL	10.5J	859	301	8.5	875	340	420 A A
305/25ZR28	105Y	XL	11J	812	313	8.5	925	340	420 A A

# CF510 HP



**4 wide longitudinal grooves**

provide rapid water drainage and ensure the safety on wet roads.



**Variable pitch and Optimized lateral Groove angles**

efficiently reduce the riding noise.



**Compound formula**

with high percentage of silica enhances the grip performance on the wet surface.



**Optimized ground Contact shape**

reduces the rolling resistance and enhances the riding stability.



Applicable models



Size	LT/SS	Std/XL	Rim	Dimensions (mm)			Max.Load (kg)	Max.Press (kPa)	UTQG
				OD	SW	NSD			
★155/80R13	79T	Std	4.5J	578	157	8.0	437	300	440 A A
185/70R13	86H	Std	5.5J	590	189	8.0	530	300	440 A A
185/70R14	88H	Std	5.5J	616	189	8.0	560	300	440 A A
195/70R14	91H	Std	6J	630	201	8.0	615	300	440 A A
205/70R14	95H	Std	6J	644	209	8.2	690	300	440 A A
215/70R14	96H	Std	6.5J	658	221	8.2	710	300	440 A A
205/70R15	77T	Std	5J	544	170	8.0	412	300	440 A A
215/70R15	86H	Std	5.5J	596	189	8.2	530	300	440 A A
★165/65R13	89H	Std	6J	610	201	8.2	580	300	440 A A
185/65R14	82H	Std	5.5J	578	189	8.2	475	300	440 A A
195/65R14	86H	Std	6J	590	201	8.2	530	300	440 A A
185/65R15	96H	Std	6J	669	209	8.2	710	300	440 A A
195/65R15	98H	Std	6.5J	683	221	8.2	750	300	440 A A
195/65R15	88H	Std	5.5J	621	189	8.2	560	300	440 A A
205/65R15	91V	Std	6J	635	201	8.2	615	300	440 A A
215/65R15	95H	XL	6J	635	201	8.2	690	340	440 A A
175/60R13	94H	Std	6J	647	209	8.2	670	300	440 A A
185/60R14	96H	Std	6.5J	661	221	8.2	710	300	440 A A
195/60R14	84H	Std	5.5J	603	189	8.2	500	300	440 A A
205/60R14	88H	Std	6J	615	201	8.2	560	300	440 A A
185/60R15	88V	Std	6J	615	201	8.2	560	300	440 A A
195/60R15	91V	Std	6J	627	209	8.2	615	300	440 A A
195/60R15	94H	Std	6.5J	639	221	8.2	670	300	440 A A
205/60R15	96V	Std	6.5J	651	228	8.2	710	300	440 A A
215/60R15	82V	Std	6J	585	194	8.0	475	300	440 A A
225/60R15	85V	Std	6J	595	201	8.2	515	300	440 A A
195/60R16	88V	Std	6.5J	607	214	8.2	560	300	440 A A
205/60R16	82V	Std	6J	577	201	8.0	475	300	440 A A
215/60R16	86V	Std	6.5J	587	214	8.2	530	300	440 A A
225/60R16	89H	Std	6J	640	201	8.2	580	300	440 A A
235/60R16	92V	Std	6J	652	209	8.2	630	300	440 A A
185/55R15	99V	XL	6.5J	664	221	8.2	775	340	440 A A
195/55R15	98H	Std	6.5J	676	228	8.2	750	300	440 A A
205/55R15	100H	Std	7J	688	240	8.2	800	300	440 A A
195/55R16	91V	Std	6.5J	632	214	8.2	615	300	440 A A
205/55R16	87V	Std	6J	620	201	8.2	545	300	440 A A
195/50R15	77H	Std	5J	540	177	8.2	412	300	440 A A
205/50R15	88H	Std	6J	602	209	8.2	560	300	440 A A

# CF3000 M/T



**Unique shoulder blocks**  
protection strip and 3D side-wall, enhancing traction in muddy conditions and snowy conditions.



**Uni-directional depth pattern groove,**  
Increasing traction



**specifications**  
coverage from 15 to 26 inch; maximum specification, maximum size



**Shoulder design**  
for stone prevention under severe road conditions



**Solidify tire body for protection**  
Drainage and mud shedding



Applicable models

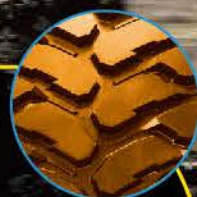


Size	LI/SS	PR	Rim	Dimensions (mm)			Max.Load (kg)		Max.Press (kPa)
				OD	SW	NSD	Single	Dual	
255/55R19	111RXL	-	8.0	763	265	15.0	1090	-	340
185/85R16LT	98/95Q	6PR	5.0	738	195	11.0	750	690	350
215/85R16LT	115/112Q	10PR	6.0	778	216	14.0	1215	1120	550
235/85R16LT	120/116Q	10PR	6.5	812	235	15.0	1380	1260	550
215/75R15LT	100/97Q	6PR	6.0	709	216	14.0	800	730	350
235/75R15LT	104/101Q	6PR	6.5	739	235	14.0	900	825	350
225/75R16LT	115/112Q	10PR	6.0	750	223	14.0	1215	1120	550
245/75R16LT	120/116Q	10PR	7.0	780	248	15.0	1380	1260	550
265/75R16LT	123/120Q	10PR	7.5	810	267	15.0	1550	1400	550
285/75R16LT	126/123Q	10PR	8.0	840	286	15.0	1700	1550	550
315/75R16LT	127/124Q	10PR	8.5	884	313	15.0	1750	1600	450
205/70R15LT	96/93Q	6PR	6.0	675	209	14.0	710	650	350
235/70R16LT	110/107Q	8PR	7.0	742	240	14.0	1060	975	450
245/70R16LT	118/115Q	10PR	7.0	756	248	14.0	1320	1215	550
305/70R16LT	118/115Q	8PR	9.0	840	311	15.0	1320	1215	350
265/70R17LT	121/118Q	10PR	8.0	810	272	15.0	1450	1320	550
285/70R17LT	121/118Q	8PR	8.5	838	292	15.0	1450	1320	450
265/65R17LT	120/117Q	10PR	8.0	782	272	14.0	1400	1285	550
275/65R18LT	123/120Q	10PR	8.0	883	318	15.0	1550	1400	550
285/65R18LT	125/122Q	10PR	8.5	833	292	15.0	1650	1500	550
31x10.50R15LT	109Q	6PR	8.5	781	268	15.0	1030	-	350
32x11.50R15LT	113Q	6PR	9.0	807	290	15.0	1150	-	350
33x12.50R15LT	108Q	6PR	10.0	832	318	15.0	1000	-	250
33x12.50R17LT	114Q	8PR	10.0	832	318	15.0	1180	-	350
33x12.50R18LT	118Q	10PR	10.0	832	318	15.0	1320	-	450
33x12.50R20LT	114Q	10PR	10.0	832	318	15.0	1180	-	450
33x12.50R22LT	109Q	10PR	10.0	832	318	15.0	1030	-	450
33x12.50R24LT	104Q	10PR	10.0	832	318	15.0	900	-	450
35x12.50R15LT	113Q	6PR	10.0	883	318	16.0	1150	-	250
35x12.50R17LT	121Q	10PR	10.0	883	318	16.0	1450	-	450
35x12.50R18LT	123Q	10PR	10.0	883	318	16.0	1550	-	450
35x12.50R20LT	121Q	10PR	10.0	883	318	16.0	1450	-	450
35x12.50R22LT	117Q	10PR	10.0	883	318	16.0	1285	-	450
35x12.50R24LT	113Q	10PR	10.0	883	318	16.0	1150	-	450
37x12.50R16.5LT	133N	10PR	9.8	934	318	16.0	2060	-	450
37x12.50R17LT	124Q	8PR	10.0	934	318	16.0	1600	-	350
35x13.50R20LT	124Q	10PR	11.0	883	345	16.0	1600	-	450
37x13.50R20LT	127Q	10PR	11.0	934	345	16.0	1750	-	450
37x13.50R22LT	123Q	10PR	11.0	934	345	16.0	1550	-	450
37x13.50R24LT	120Q	10PR	11.0	934	345	16.0	1400	-	450
37x13.50R26LT	117Q	10PR	11.0	934	345	16.0	1285	-	450
38x15.50R20LT	125Q	8PR	12.0	959	390	14.0	1650	-	350
40x15.50R24LT	128P	10PR	12.0	1010	390	16.0	1800	-	450
40x15.50R26LT	127P	10PR	12.0	1010	390	16.0	1750	-	450
42x15.50R28LT	128P	10PR	12.0	1061	390	14.0	1800	-	450

# CF3000 *POR*



**Unique shoulder blocks**  
protection strip and 3D side-wall, enhancing traction in muddy conditions and snowy conditions.



**Uni-directional depth pattern groove,**  
Increasing traction



**specifications**  
coverage from 15 to 26 inch; maximum specification, maximum size



**Shoulder design**  
for stone prevention under severe road conditions



**Solidify tire body for protection**  
Drainage and mud shedding



Applicable models



Size	LI/SS	PR	Rim	OD	Dimensions (mm)		Max.Load (kg)		Max.Press (kPa)
					SW	NSD	Single	Dual	
255/55R19	111QXL	-	8.0	763	265	15.0	1090	-	340
235/85R16LT	120/116Q	10PR	6.5	812	235	15.0	1380	1260	550
215/75R15LT	100/97Q	6PR	6.0	709	216	14.0	800	730	350
235/75R15LT	104/101Q	6PR	6.5	739	235	14.0	900	825	350
265/75R16LT	119/116Q	8PR	7.5	810	267	15.0	1360	1250	450
285/75R16LT	116/113Q	6PR	8.0	840	286	15.0	1250	1150	350
315/75R16LT	121/118Q	8PR	8.5	884	313	15.0	1450	1320	350
275/65R18LT	113/110Q	6PR	8.0	883	318	15.0	1150	1060	350
285/65R18LT	121/118Q	8PR	8.5	833	292	15.0	1450	1320	450
31×10.50R15LT	109Q	6PR	8.5	781	268	15.0	1030	-	350
33×12.50R15LT	108Q	6PR	10.0	832	318	15.0	1000	-	250
33×12.50R20LT	114Q	10PR	10.0	832	318	15.0	1180	-	450
35×12.50R15LT	113Q	6PR	10.0	883	318	16.0	1150	-	250
35×12.50R17LT	121Q	10PR	10.0	883	318	16.0	1450	-	450
35×12.50R18LT	118Q	8PR	10.0	883	318	16.0	1320	-	350
35×12.50R20LT	121Q	10PR	10.0	883	318	16.0	1450	-	450
35×12.50R22LT	117Q	10PR	10.0	883	318	16.0	1285	-	450
37×13.50R20LT	121Q	8PR	11.0	934	345	16.0	1450	-	350
305/70R16LT	118/115Q	8PR	9.0	840	311	15.0	1320	1215	350
32×11.50R15LT	113Q	6PR	9.0	807	290	15.0	1150	-	350
225/75R16LT	115/112Q	10PR	6.0	750	223	14.0	1215	1120	550
245/75R16LT	120/116Q	10PR	7.0	780	248	15.0	1380	1260	550
265/70R17LT	121/118Q	10PR	8.0	810	272	15.0	1450	1320	550
285/70R17LT	121/118Q	8PR	8.5	838	292	15.0	1450	1320	450
33×12.50R17LT	114Q	8PR	10.0	832	318	15.0	1180	-	350

# CF2000 H/T



Designed for paved road use

Zigzag sipes on the shoulder block and tread

are for reducing noise level and improving traction in both wet and dry conditions.

4 circumferential grooves

for excellent water evacuation for good wet traction.

Wider center rib

for stable handling at high speed straight line driving.



Applicable models



Size	LI/SS	Rim	Dimensions (mm)			Max.Load (kg)		Max.Press (kPa)	UTQG
			OD	SW	NSD	Single	Dual		
215/75R15	100H	6.0	703	216	8.5	800	-	300	420 A A
225/75R15	102H	6.0	719	223	8.5	850	-	300	420 A A
235/75R15	105H	6.5	733	235	8.5	925	-	300	420 A A
265/75R16	116T	7.5	804	267	8.8	1250	-	300	420 A A
205/70R14	95H	6.0	644	209	8.5	690	-	300	420 A A
205/70R15	96H	6.0	669	209	8.5	710	-	300	420 A A
215/70R16	100H	6.5	708	221	8.5	800	-	300	420 A A
225/70R16	103H	6.5	722	228	8.5	875	-	300	420 A A
235/70R16	106H	7.0	736	240	8.5	950	-	300	420 A A
245/70R16	107H	7.0	750	248	8.5	975	-	300	420 A A
255/70R16	111H	7.5	764	260	8.8	1090	-	300	420 A A
265/70R16	112H	8.0	778	272	8.8	1120	-	300	420 A A
275/70R16	114H	8.0	792	279	8.8	1180	-	300	420 A A
205/65R16	95H	6.0	672	209	8.5	690	-	300	420 A A
215/65R16	102HXL	6.5	686	221	8.5	850	-	340	420 A A
225/65R17	102H	6.5	724	228	8.5	850	-	300	420 A A
235/65R17	108HXL	7.0	738	240	8.5	1000	-	340	420 A A
245/65R17	107H	7.0	750	248	8.5	975	-	300	420 A A
255/65R17	110H	7.5	764	260	8.8	1060	-	300	420 A A
265/65R17	112H	8.0	776	272	8.8	1120	-	300	420 A A
275/65R17	119HXL	8.0	790	279	8.8	1360	-	340	420 A A
285/65R17	116H	8.5	802	292	8.8	1250	-	300	420 A A
265/65R18	114H	8.0	801	272	8.8	1180	-	340	420 A A
275/65R18	116H	8.0	815	279	8.8	1250	-	300	420 A A
205/60R16	92V	6.0	652	209	8.5	630	-	300	420 A A
215/60R17	96V	6.5	690	221	8.5	710	-	300	420 A A
225/60R17	103HXL	6.5	702	228	8.5	875	-	340	420 A A
235/60R17	106HXL	7.0	714	240	8.5	950	-	300	420 A A
235/60R18	107HXL	7.0	739	240	8.5	975	-	340	420 A A
265/60R18	114HXL	8.0	775	272	8.8	1180	-	340	420 A A
275/60R20	115H	8.0	838	279	8.8	1215	-	300	420 A A
235/55R17	103WXL	7.5	690	245	8.5	875	-	340	420 A A
215/55R18	99WXL	7.0	693	226	8.5	775	-	340	420 A A
235/55R18	104WXL	7.5	715	245	8.5	900	-	340	420 A A
235/50R18	101WXL	7.5	693	245	8.5	825	-	340	420 A A
215/75R15LT	116/114S10PR0		703	216	8.5	1250	1180	550	-
245/70R17LT	119/116S10PR0		776	248	10.8	1360	1250	550	-
265/70R17LT	121/118S10PR0		804	272	10.8	1450	1320	550	-

# CF1000 A/T



Complete specifications



**3D block design** enhances the grip ability on both wet and dry road, protect the thread against injury under severe road conditions



Double carcasses, obdurability



Sidewall protection, beauty

Applicable models



Sidewall	Size	LI/SS	PR	Rim	Dimensions (mm)			Max.Load (kg)		Max.Press (kPa)	UTQG
					OD	SW	NSD	Single	Dual		
OWL	P215/75R15	100S	-	6.0	703	216	10.5	790	-	300	420 A B
OWL	P235/75R15	105S	-	6.5	733	235	10.8	920	-	300	420 A B
OWL	225/70R15	100T	-	6.5	697	228	10.8	800	-	300	420 A B
OWL	P215/70R16	99T	-	6.5	708	221	10.5	775	-	300	420 A B
OWL	P235/70R16	104T	-	7.0	736	240	10.8	900	-	300	420 A B
OWL	P245/70R16	106T	-	7.0	750	248	10.8	950	-	300	420 A B
OWL	255/70R16	111T	-	7.5	764	260	10.8	1090	-	300	420 A A
OWL	P265/70R16	111T	-	8.0	778	272	10.8	1090	-	300	420 A B
OWL	P265/65R17	110T	-	8.0	776	272	10.8	1060	-	300	420 A B
OWL	225/60R17	99H	-	6.5	702	228	10.8	775	-	300	420 A B
OWL	235/60R16	100H	-	7.0	688	240	10.8	800	-	300	420 A B
OWL	255/60R18	112HXL	-	7.5	763	260	10.8	1120	-	340	420 A A
OWL	285/60R18	116T	-	8.5	799	292	10.8	1250	-	300	420 A B
OWL	235/55R16	98H	-	7.5	674	255	10.8	750	-	300	420 A B
OWL	265/50R20	107T	-	8.5	774	277	9.8	975	-	300	420 A B
OWL	235/85R16LT	120/116S	10PR	6.5	806	235	13.0	1380	1260	550	-
OWL	245/75R16LT	120/116S	10PR	7.0	774	248	13.0	1380	1260	550	-
OWL	265/75R16LT	123/120S	10PR	7.5	804	267	13.0	1550	1400	550	-
OWL	285/75R16LT	126/123S	10PR	8.0	834	286	13.0	1700	1550	550	-
OWL	265/70R16LT	121/118S	10PR	8.0	778	272	13.0	1450	1320	550	-
OWL	265/70R17LT	121/118S	10PR	8.0	804	272	13.0	1450	1320	550	-
OWL	285/70R17LT	121/118S	10PR	8.5	832	292	13.0	1450	1320	550	-
OWL	30x9.50R15LT	104R	6PR	7.5	750	240	13.0	900	-	350	-
OWL	31x10.50R15LT	109S	6PR	8.5	775	268	13.0	1030	-	350	-
OWL	35x12.50R17LT	121S	10PR	10.0	877	318	13.0	1450	-	450	-
OWL	35x12.50R18LT	123S	10PR	10.0	877	318	13.0	1550	-	450	-
OWL	35x12.50R20LT	121S	10PR	10.0	877	318	13.0	1450	-	450	-

# CF4000 SUV/CUV



### Asymmetric tread design

for excellent riding stability and precise handling on wet roads.



### 4 Circumferential grooves

for excellent water evacuation, minimize the risk of aquaplaning at high speed.



### Various sipes and Lateral grooves

efficiently reduce the rinding noise.



### Silica tread compound

for lower rolling resistance and better grip performance.



Applicable models



Size	LI/SS	Std/XL	Rim	Dimensions (mm)			Max.Load (kg)	Max.Press (kPa)	UTQG
				OD	SW	NSD			
225/60R18	104H	XL	6.5	727	228	8.3	900	340	320 A A
245/60R18	105V	Std	7.0	751	248	8.3	925	300	320 A A
225/55ZR18	102W	XL	7.0	705	233	8.3	850	340	320 A A
255/55ZR18	109W	XL	8.0	737	265	8.3	1030	340	320 A A
255/55ZR19	111W	XL	8.0	763	265	8.3	1090	340	320 A A
275/55ZR20	117W	XL	8.5J	810	284	8.3	1285	340	320 A A
245/50ZR18	104W	XL	7.5J	703	253	8.3	900	340	320 A A
265/50ZR20	111W	XL	8.5J	774	277	8.3	1090	340	320 A A
285/50ZR20	116W	XL	9J	794	297	8.3	1250	340	320 A A
* 245/40R20	99Y	Std	8.5	704	248	8.5	775	340	320 A A
275/45ZR20	110W	XL	9.0	756	273	8.5	1060	340	320 A A
275/40R20	106W	XL	9.5J	728	278	8.5	950	340	320 A A
295/35ZR21	107W	XL	10.5	739	301	8.3	975	340	320 A A



# THRUSTER Off-Road Competition



COC China Off-road Championship

**Widen flat pattern block with depth groove**

having stronger pressure resistance and better drainage and mud shedding ability

**Anti pressure, cutting resistance, durability**

**Jig-saw tread pattern**

helps to improve tire's gripping and driving performance

Applicable models



Size	L/SS
31×10.50-16LT	109N
▲ 31×10.50-15LT	107N
▲ 32×10.50-16LT	110N
33×10.50-16LT	114L
35×10.50-16LT	119L

# CF930 Winter HP



**Special Y-style directional pattern design**

**Advanced silica compound**



Applicable models



Size	LI/SS	Std/XL	Rim	Dimensions (mm)			Max.Load (kg)	Max.Press (kPa)
				OD	SW	NSD		
165/70R13	79T	Std	5.0	562	170	8.4	437	300
165/70R14	81T	Std	5.0	588	170	8.4	462	300
175/70R14	88T	XL	5.0	602	177	8.4	560	340
185/70R14	88T	Std	5.5	616	189	8.5	560	300
175/65R14	82T	Std	5.0	584	177	8.4	475	300
185/65R14	86T	Std	5.5	596	189	8.5	530	300
175/65R15	84T	Std	5.0	609	177	8.4	500	300
185/65R15	88T	Std	5.5	621	189	8.5	560	300
195/65R15	91T	Std	6.0	635	201	8.7	615	300
205/65R15	94T	Std	6.0	647	209	8.7	670	300
185/60R14	82T	Std	5.5	578	189	8.5	475	300
185/60R15	88H	XL	5.5	603	189	8.5	560	340
195/60R15	88H	Std	6.0	615	201	8.7	560	300
205/60R16	96H	XL	6.0	652	209	8.7	710	340
215/60R16	99H	XL	6.5	664	221	8.7	775	340
195/55R15	85H	Std	6.0	595	201	8.7	515	300
195/55R16	91H	XL	6.0	620	201	8.7	615	340
205/55R16	91T	Std	6.5	632	214	9.0	615	300
215/55R16	97H	XL	7.0	642	226	8.7	730	340
225/55R16	99H	XL	7.0	654	233	8.7	775	340
215/55R17	98H	XL	7.0	668	226	8.7	750	340
225/55R17	101H	XL	7.0	680	233	8.7	825	340
195/50R15	82H	Std	6.0	577	201	8.7	475	300
205/50R17	93H	XL	6.5	638	214	8.7	650	340
225/50R17	98H	XL	7.0	658	233	8.7	750	340

# CF960 Winter SUV/UHP



### Asymmetric tread design

provides balanced performance for different driving conditions.

### Advanced silica compound

keeps rubber flexible for maximum performance in extreme cold temperatures in winter.

### High density 3D sipes

ensure the general rigidity of the tread, improve the adhesive power between wheel and the ice-snow ground, and strengthen the holding ability.

### Well-designed footprint

for excellent handling ability in both ice-snow and dry-wet road conditions.

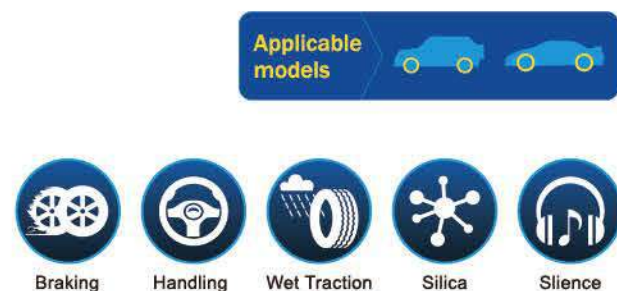


Applicable models

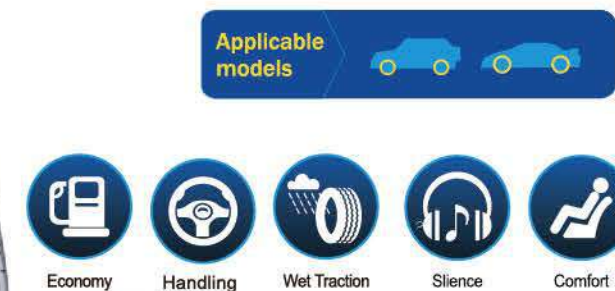


Size	LI/SS	Std/XL	Rim	Dimensions (mm)			Max.Load (kg)	Max.Press (kPa)
				OD	SW	NSD		
215/75R15	100T	Std	6J	703	216	11.5	800	300
245/75R17	112T	Std	7J	800	248	11.5	1120	300
235/70R16	106T	Std	7J	736	240	11.5	950	300
285/70R17	117T	Std	8 1/2J	832	292	11.5	1285	300
235/65R18	106T	/	7.0J	763	240	11.5	950	300
265/60R18	110T	Std	8J	775	272	11.5	1060	300
285/60R18	116T	Std	8 1/2J	799	292	11.5	1250	300
235/55R17	103H	XL	7 1/2J	690	245	11.5	875	340
215/55R18	99H	XL	7J	693	226	11.5	775	340
235/55R18	104H	XL	7 1/2J	715	245	11.5	900	340
245/55R19	107H	XL	7.5J	753	253	9.5	975	340
275/55R19	111H	Std	8 1/2J	785	284	11.5	1090	300
215/50R17	91H	XL	7J	648	226	9.5	615	300
235/50R18	101V	XL	7 1/2J	693	245	11.5	825	340
245/50R18	104V	XL	7 1/2J	703	253	9.5	900	340
235/50R19	103V	XL	7 1/2J	719	245	11.5	875	340
245/50R20	105V	XL	7.5J	754	253	11.5	925	340
285/50R20	116V	XL	9J	794	297	11.5	1250	340
275/50R21	113V	XL	8.5J	809	284	11.5	1150	340
235/45R17	97V	XL	8J	644	236	9.5	730	340
225/45R18	95H	XL	7 1/2J	659	225	9.5	690	340
255/45R18	103V	XL	8 1/2J	687	255	9.5	875	340
275/45R18	107V	XL	9J	705	273	9.5	975	340
225/45R19	96H	XL	7 1/2J	685	225	9.5	710	340
245/45R19	102V	XL	8J	703	243	9.5	850	340
255/45R19	104V	XL	8 1/2J	713	255	11.5	900	340
245/45R20	103V	XL	8J	728	243	11.5	875	340
275/45R20	110V	XL	9J	756	273	11.5	1060	340
275/45R21	110V	XL	9J	781	273	11.5	1060	340
255/40R18	99V	XL	9J	661	260	9.5	775	340
275/40R19	105V	XL	9 1/2J	703	278	9.5	925	340
245/40R20	99V	XL	8 1/2J	704	248	9.5	775	340
275/40R20	106V	XL	9 1/2J	728	278	11.5	950	340
275/40R22	107V	XL	9 1/2J	779	278	11.5	975	340
275/35R20	102V	XL	9 1/2J	700	278	9.5	850	340
315/35R20	110V	XL	11J	728	320	11.5	1060	340

# CF710 RFT



# CF4000 RFT



## Product Detail

Size	LI/SS	Std/XL	Rim	Dimensions (mm)			Max.Load (kg)	Max.Press (kPa)	UTQG
				OD	SW	NSD			
205/55RF16	91V	Std	6.5	632	214	8.2	615	300	380 A A
225/55RF17	101V	XL	7.0	680	233	8.2	825	350	380 A A
225/50RF17	98V	XL	7.0	658	233	8.2	750	350	380 A A
★ 255/50RF19	107W	XL	8.0	739	265	8.2	975	340	380 A A
▲ 225/45RF17	94W	XL	7.5	634	225	8.2	570	340	380 A A
245/45RF18	100V	XL	8.0	677	248	8.2	800	340	380 A A
★ 245/45RF19	102W	XL	8.0	703	243	8.2	850	340	380 A A
225/40RF18	92W	XL	8.0	637	230	8.2	630	340	380 A A
245/40RF18	97V	XL	8.5	653	248	8.2	730	340	380 A A
★ 245/40RF19	98W	XL	8.5	679	248	8.2	750	340	380 A A
★ 275/40RF19	105W	Std	9.5	703	278	8.2	925	340	380 A A
▲ 205/45RF17	88W	XL	7.0	616	206	8.2	560	340	380 A A
▲ 205/50RF17	93W	XL	6.5	638	214	8.2	650	340	380 A A
▲ 255/35RF18	90W	Std	9.0	635	260	8.2	600	300	380 A A
▲ 225/45RF18	91Y	Std	7.5	659	225	8.2	615	300	380 A A
▲ 255/40RF18	99Y	XL	9.0	661	260	8.2	775	340	380 A A
▲ 225/40RF19	89W	Std	8.0	663	230	8.2	580	300	380 A A


## Product Detail






Size	LI/SS	Std/XL	Rim	Dimensions (mm)			Max.Load (kg)	Max.Press (kPa)	UTQG
				OD	SW	NSD			
255/55RF18	105V	Std	8.0	737	265	8.2	925	300	320 A A
245/50RF18	100V	Std	7.5	703	253	8.2	800	300	320 A A
▲ 245/40RF20	99Y	XL	8.5	704	248	8.2	775	340	320 A A

# CF700 UHP


# CF620 HP







Applicable models 

 Handling 
  Silence 
  Wet Traction 
  Braking 
  Silica



Applicable models 

 Economy 
  Wet Traction 
  Silence 
  Comfort

## Product Detail

Size	LI/SS	Std/XL	Rim	Dimensions (mm)			Max.Load (kg)	Max.Press (kPa)	UTQG
				OD	SW	NSD			
205/45ZR17	88W	XL	7.0	616	206	8.2	560	350	380 A A
215/45ZR17	91W	XL	7.0	626	213	8.2	560	350	380 A A
225/45ZR17	94W	XL	7.5	634	225	8.5	560	350	380 A A
235/45ZR17	97W	XL	8.0	644	236	8.5	560	350	380 A A
245/45ZR18	100W	XL	8.0	677	243	8.5	560	350	380 A A
245/45ZR19	102W	XL	8.0	703	243	8.5	560	350	380 A A
195/40ZR17	81W	XL	7.0	588	200	8	560	350	380 A A
205/40ZR17	84W	XL	7.5	596	212	8.5	560	350	380 A A
215/40ZR17	87W	XL	7.5	604	218	8.5	560	350	380 A A
245/40ZR17	95W	XL	8.5	628	248	8.5	560	350	380 A A
225/40ZR18	92W	XL	8.0	637	230	8.5	560	350	380 A A
235/40ZR18	95W	XL	8.5	645	241	8.5	560	350	380 A A
255/40ZR19	100W	XL	9.0	687	260	8.5	560	350	380 A A
275/40ZR19	105W	XI	9.5	703	278	8.5	560	350	380 A A
245/40ZR20	99W	XL	8.5	704	248	8.5	560	350	380 A A
215/35ZR18	84W	XL	7.5	607	218	8.5	560	350	380 A A
235/35ZR19	91W	XL	8.5	647	241	8.2	560	350	380 A A
225/35ZR20	90W	XL	8.0	666	230	8.5	560	350	380 A A
245/35ZR20	95W	XL	8.5	680	248	8.5	560	350	380 A A
275/35ZR20	102W	XL	9.5	700	278	8.5	560	350	380 A A
225/30ZR20	85W	XL	8.0	644	230	8.5	560	350	380 A A

## Product Detail

Size	LI/SS	Std/XL	Rim	Dimensions (mm)			Max.Load (kg)	Max.Press (kPa)	UTQG
				OD	SW	NSD			
155/80R13	79T	Std	4.5	578	157	7.9	437	300	600 A A
165/80R14	85T	Std	4.5	620	165	8.0	515	300	600 A A
165/70R13	79T	Std	5.0	562	170	8.5	437	300	600 A A
175/70R13	82H	Std	5.0	576	177	7.8	475	300	600 A A
185/70R13	86T	Std	5.5	590	189	9.0	530	300	600 A A
165/70R14	81T	Std	5.0	588	170	8.5	462	300	600 A A
175/70R14	84H	Std	5.0	602	177	8.5	500	300	600 A A
185/70R14	88H	Std	5.5	616	189	9.0	560	300	600 A A
155/65R13	73T	Std	4.5	532	157	8.5	365	300	600 A A
165/65R13	77T	Std	5.0	544	170	8.5	412	300	600 A A
175/65R14	82H	Std	5.0	584	177	8.5	475	300	600 A A
185/65R14	86H	Std	5.5	596	189	9.0	530	300	600 A A
185/65R15	88H	Std	5.5	621	189	9.0	560	300	600 A A
195/65R15	91H	Std	6.0	635	201	9.0	615	300	600 A A
205/65R15	94H	Std	6.0	647	209	9.0	670	300	600 A A
205/65R16	95H	Std	6.0	672	209	9.0	690	300	600 A A
185/60R14	82H	Std	5.5	578	189	9.0	475	300	600 A A
195/60R14	86H	Std	6.0	590	201	9.0	530	300	600 A A
185/60R15	84H	Std	5.5	603	189	9.0	500	300	600 A A
195/60R15	88H	Std	6.0	615	201	9.0	560	300	600 A A
205/60R15	91H	Std	6.0	627	209	9.0	615	300	600 A A
205/60R16	92H	Std	6.0	652	209	9.0	630	300	600 A A
215/60R16	99H	XL	6.5	664	221	9.0	775	340	600 A A
195/55R15	85V	Std	6.0	595	201	9.0	515	300	600 A A
205/55R16	94V	XL	6.5	632	214	9.0	670	340	600 A A

# CF600 HP

# Sports K4 HP



Applicable models 



Applicable models 



## Product Detail

★ LEVEL UP

Size	LI/SS	Std/XL	Rim	Dimensions (mm)			Max.Load (kg)	Max.Press (kPa)	UTQG
				OD	SW	NSD			
★ 155/80R13	79T	Std	4.5	578	157	7.9	437	300	380 A A
★ 155/70R13	75T	Std	4.5	548	157	7.8	387	300	380 A A
★ 165/70R13	79T	Std	5.0	562	170	7.8	437	300	380 A A
★ 175/70R13	82H	Std	5.0	576	177	7.8	475	300	380 A A
★ 165/70R14	81H	Std	5.0	588	170	7.8	462	300	380 A A
★ 175/70R14	84H	Std	5.0	602	177	7.8	500	300	380 A A
★ 185/70R14	88H	Std	5.5	616	189	8.0	560	300	380 A A
★ 195/70R14	91H	Std	6.0	630	201	8.0	615	300	380 A A
215/70R15	98H	Std	6.5	683	221	8.2	750	300	380 A A
★ 175/65R14	82H	Std	5.0	584	177	7.8	475	300	380 A A
★ 185/65R14	86H	Std	5.5	596	189	8.2	530	300	380 A A
★ 175/65R15	84H	Std	5.0	609	177	7.8	500	300	380 A A
★ 185/65R15	88H	Std	5.5	621	189	8.2	560	300	380 A A
★ 195/65R15	91H	Std	6.0	635	201	8.2	615	300	380 A A
★ 205/65R15	94H	Std	6.0	647	209	8.2	670	300	380 A A
215/65R15	96H	Std	6.5	661	221	8.2	710	300	380 A A
★ 185/60R14	82H	Std	5.5	578	189	8.2	475	300	380 A A
★ 185/60R15	84H	Std	5.5	603	189	8.2	500	300	380 A A
★ 195/60R15	88H	Std	6.0	615	201	8.2	560	300	380 A A
★ 205/60R15	91H	Std	6.0	627	209	8.2	615	300	380 A A
215/60R15	94H	Std	6.5	639	221	8.2	670	300	380 A A
225/60R15	96V	Std	6.5	651	228	8.2	710	350	380 A A
★ 195/60R16	89H	Std	6.0	640	201	8.2	580	300	380 A A
★ 205/60R16	92V	Std	6.0	652	209	8.2	630	300	380 A A
215/60R16	95H	Std	6.5	664	221	8.2	690	300	380 A A
225/60R16	98V	Std	6.5	676	228	8.2	750	350	380 A A
235/60R16	100H	Std	7.0	688	240	8.2	800	300	380 A A

## Product Detail




Size	LI/SS	Rim	Dimensions (mm)			Max.Load (kg)	Max.Press (kPa)	UTQG
			OD	SW	NSD			
185/75R14	89H	5.0	634	184	7.3	580	300	380 A A
155/65R14	75T	4.5	558	157	7.2	387	300	380 A A
165/65R14	79S	5.0	570	170	7.2	437	300	380 A A
165/65R15	81H	5.0	595	170	7.2	462	300	380 A A
165/60R14	75H	5.0	554	170	7.2	387	300	380 A A
155/60R15	74H	4.5	567	157	7.2	375	300	380 A A
165/60R15	77H	5.0	579	170	6.8	412	300	380 A A
175/60R15	81H	5.0	591	177	7.1	462	300	380 A A
165/55R14	72V	5.0	538	170	6.8	355	300	380 A A
165/55R15	75V	5.0	563	170	6.8	387	300	380 A A
175/55R15	77V	5.5	573	182	7.2	412	300	380 A A
165/50R15	73V	5.0	547	170	6.8	365	300	380 A A
165/50R16	75V	5.0	572	170	6.8	387	300	380 A A
165/45R15	68V	5.5	529	165	6.8	315	300	380 A A
165/45R16	74VXL	5.5	554	165	6.8	375	340	380 A A
165/40R16	73VXL	6.0	538	170	6.8	365	340	380 A A

# CF300 Commercial/VAN

# CF350 Commercial/VAN



Applicable models 

Economy  Handling  Wet Traction  Braking  High Mileage 



Applicable models 

Economy  Silence  Comfort  High Mileage  Wet Traction 

## Product Detail

Sidewall	Size	LI/SS	PR	Rim	Dimensions (mm)		Max.Load(kg)		Max.Press (kPa)
					OD	SW	Single	Dual	
BSW	185R14C	102/100Q	8PR	5.5	650	188	850	800	450
WSW	185R14C	102/100Q	8PR	5.5	650	188	850	800	450
BSW	195R14C	106/104Q	8PR	5.5	666	198	950	900	450
WSW	195R14C	106/104Q	8PR	5.5	666	198	950	900	450
	205R14C	107/105R	8PR	6.0	686	208	975	925	450
BSW	195R15C	106/104R	8PR	5.5	693	196	950	900	450
WSW	195R15C	106/104R	8PR	5.5	693	196	950	900	450
WSW	205/75R14C	109/107R	8PR	5.5	664	203	1030	975	475
WSW	205/75R15C	110/108R	8PR	5.5	689	203	1060	1000	475
	185/75R16C	104/102R	8PR	5.0	684	184	900	850	475
	195/75R16C	107/105R	8PR	5.5	698	196	975	925	475
WSW	205/75R16C	110/108R	8PR	5.5	714	203	1060	1000	475
	225/75R16C	121/120R	10PR	6.0	744	223	1450	1400	575
	195/70R15C	104/102R	8PR	6.0	655	201	900	850	450
WSW	205/70R15C	106/104R	8PR	6.0	669	209	950	900	450
	215/70R15C	109/107R	8PR	6.5	683	221	1030	975	450
	225/70R15C	112/110R	8PR	6.5	697	228	1120	1060	450
	195/65R16C	104/102R	8PR	6.0	660	201	900	850	475
	205/65R16C	107/105T	8PR	6.0	672	209	975	925	475
	215/65R16C	109/107T	8PR	6.5	686	221	1030	975	475
	225/65R16C	112/110T	8PR	6.5	698	228	1120	1060	475
	235/65R16C	115/113T	8PR	7.0	712	240	1215	1150	475

## Product Detail

Size	LI/SS	PR	Rim	Dimensions (mm)			Max.Load (kg)		Max.Press (kPa)
				OD	SW	NSD	Single	Dual	
155R13C	90/88S	8PR	4.5	578	157	10.0	600	560	450
165R13C	94/93S	8PR	4.5	594	165	10.0	670	650	450
175R13C	97/95S	8PR	5.0	610	177	10.0	730	690	450
165R14C	96/95S	8PR	4.5	620	165	10.0	710	690	450
185R14C	102/100Q	8PR	5.5	650	188	9.0	850	800	450
195R14C	106/104Q	8PR	5.5	666	198	9.0	950	900	450
195R15C	106/104R	8PR	5.5	693	198	9.0	950	900	450
175/75R16C	101/99R	8PR	5.0	668	177	9.0	825	775	475
★ 185/75R16C	104/102R	8PR	5.0	684	184	9.0	900	850	475
215/75R16C	116/114S	10PR	6.0	728	216	9.0	1250	1180	525
165/70R13C	88/86S	6PR	5.0	562	170	10.0	560	530	375
165/70R14C	84/80S	6PR	5.0	588	170	10.0	500	450	350
175/70R14C	98/96S	8PR	5.0	602	177	10.0	750	710	450
185/70R14C	102/100S	8PR	5.5	616	189	10.0	850	800	450
★ 195/70R15C	104/102R	8PR	6.0	655	201	9.0	900	850	450
175/65R14C	90/88T	6PR	5.0	584	177	10.0	600	560	375
★ 195/65R16C	104/102R	8PR	6.0	660	201	9.0	900	850	475
205/65R15C	102/100T	6PR	6.0	647	209	9.0	850	800	375
★ 215/65R15C	104/102T	6PR	6.5	661	221	9.0	900	850	375
★ 235/65R16C	115/113R	8PR	7.0	712	240	9.0	1215	1150	475
215/60R16C	108/106T	8PR	6.5	664	221	9.0	1000	950	475
215/60R17C	109/107T	8PR	6.5	690	221	9.0	1030	975	475
235/60R17C	117/115T	10PR	7.0	714	240	9.0	1285	1215	525

# CF950 Winter SUV

# CF970 Winter Studdable



Applicable models

Economy Winter Wet Traction Braking Silica



Applicable models

Winter Studdable Wet Traction Braking Silica

## Product Detail

Size	L/SS	Std/XL	Rim	Dimensions (mm)			Max.Load (kg)	Max.Press (kPa)
				OD	SW	NSD		
215/70R16	100T	Std	6.5	708	221	8.7	800	300
245/70R16	111T	XL	7.0	750	248	9.2	1090	340
215/65R16	98H	Std	6.5	686	221	8.7	750	300
225/65R17	106H	XL	6.5	724	228	8.7	950	340
235/65R17	108H	XL	7.0	738	234	9.5	1000	340
265/65R17	112T	Std	8.0	776	272	9.2	1120	300
215/60R17	96H	Std	6.5	690	221	8.7	710	300
225/60R17	99H	Std	6.5	702	228	9.0	775	300
235/60R17	102H	Std	7.0	714	240	9.2	850	300
235/60R18	107H	XL	7.0	739	240	9.2	975	340
255/55R18	109H	XL	8.0	737	265	9.2	1030	340
255/50R19	107V	XL	8.0	739	265	9.2	975	340
225/45R17	94H	XL	7.5	634	225	9.0	670	340
245/45R18	100V	XL	8.0	677	243	9.2	800	340
225/40R18	92V	XL	8.0	637	230	9.0	630	340

## Product Detail

Size	L/SS	Rim	Dimensions (mm)			Max.Load(kg)		Max.Press (kPa)
			OD	SW	NSD	Single	Dual	
195/65R15	91T	6.0	635	201	10.2	615	—	300
185/75R16C	104/102R 8PR	5.0	684	184	10.5	900	850	475



# CF360 Winter Commercial/VAN



**Applicable models**

Winter  
 Braking  
 Wet Traction  
 High Mileage  
 Silica

## Product Detail

Size	L/S/S	PR	Rim	Dimensions (mm)			Max.Load(kg)		Max.Press (kPa)
				OD	SW	NSD	Single	Dual	
185R14C	102/100R	8PR	5.5	650	188	10.0	850	800	450
215/75R14C	112/110R	8PR	6.0	678	216	10.0	1120	1060	475
185/75R16C	104/102R	8PR	5.0	684	184	9.0	900	850	475
195/75R16C	107/105R	8PR	5.5	698	196	9.5	975	925	475
195/70R15C	104/102R	8PR	6.0	655	201	9.5	900	850	450
215/70R15C	109/107R	8PR	6.5	683	221	9.5	1030	975	450
225/70R15C	112/110R	8PR	6.5	697	228	9.5	1120	1060	450
195/65R16C	104/102R	8PR	6.0	660	201	9.5	900	850	475
205/65R16C	107/105R	8PR	6.0	672	209	9.5	975	925	475
215/65R16C	109/107R	8PR	6.5	686	221	9.5	1030	975	475
235/65R16C	115/113R	8PR	7.0	712	240	9.5	1215	1150	475

# Quality Insurance

All Tire Made By Shandong New Continent Tire Co., Ltd. Is Insured By CPIC

DESCRIPTION OF OPERATION/ LOCATIONS/VEHICLES/ SPECIAL ITEMS

2004 ISO CG 00 38 12 04  
 Claim Made Policy  
 Retroactive Date: July 31, 2014  
 Jurisdiction/Territory Worldwide  
 Including U.S.A/canada  
 Products Covered: Passenger Car Radial Tires(Pcr), Commercial/van And Light Truck Radial Tires(Ltr)



## SPECIFICATION TAG & MARKING METHOD

### TAG detail

**Tire Brand** Comforser

**Specification** 245/45ZR18 100W

**Series** CF700

**245 / 45 ZR 18 100 W**

245 Section Width	ZR/Z means Speed Over 240km/h	100 Load Index W Speed Symbol
45 Aspect Ratio		18 RIM (inch)

### Speed

Speed symbol indicates the maximum travel speed that the tire can achieve under stated condition.

SS	Maximum Speed (km/h)
L	120
Q	160
S	180
T	190
H	210
V	240
W	270
Y	300
* ZR	over 240km / h

\* ZR means a certain range of speed

● Maximum speed refers to the speed that the tire can achieve on flat road after normal installation.

### Loading Index

Load index refers to numeral value of tire's maximum load ability under stated condition.

LI	loading capacity	LI	loading capacity	LI	loading capacity	LI	loading capacity
60	250	76	400	91	615	106	950
61	257	77	412	92	630	107	975
62	265	78	425	93	650	108	1000
63	272	79	437	94	670	109	1030
64	280	80	450	95	690	110	1060
65	290	81	462	96	710	111	1090
66	300	82	475	97	730	112	1120
67	307	83	487	98	750	113	1150
68	315	84	500	99	775	114	1180
69	325	85	513	100	800	115	1215
70	335	86	530	101	825	116	1250
71	345	87	545	102	850	117	1285
72	355	88	560	103	875	118	1320
73	365	89	580	104	900	119	1360
74	375	90	600	105	925	120	1400
75	387						

## SAFE&ECO DRIVING

### Safety Driving

Please obey the traffic laws and regulations, keep cautious and respect the other drivers and pedestrians.

### Eco Driving

The idea of "Green and Environment" is always recommended, and the advice below will save maintenance costs, extend service life of tire and save fuel.

## TIRE USAGE

### Tire Maintenance

For the sake of safety, you should check the tire air-pressure regularly at least once a month. Be cautious about the damage and uneven wear, positioning, balance or suspension failure will affect overall tire performance and cause danger. Tire is the only contact part between vehicles and ground, and it should be in a good condition always.

▶ Check the tire pressure regularly, especially before long time driving. If tire is incorrectly inflated, it will lead to increase of rolling resistance and extra fuel consumption.

▶ Faster driving speed will result in greater air resistance so as to increase fuel consumption.

▶ Keep smooth driving will avoid abrupt acceleration and sudden braking.

▶ Convert to higher gear as soon as possible to prevent the engine running fast at lower gear.

▶ Use air conditioner properly. If you don't need it, turn off all electrical equipment, for example the electrically heated rear window.

▶ Get ready for starting the engine. Switch off the engine if you predict the car will park longer than a few minutes.

▶ Check the wheel positioning and wheel camber angle by professional tire maintenance personnel regularly, and make sure that the car running smoothly and stably, which is a important factor for fuel saving.

▶ If you have a spare tire check air-pressure, too.

### Tire Rotation

Tire rotation is a simple and effective way to prolong tire service life through balancing degree of wear.

